

# B5T-007003

## Miniature Camera Module Specialized for Human Body Detection with clean suits

In the Factory Automation (FA) industry, cleanrooms increasingly rely on advanced robotics and Autonomous Mobile Robots (AMRs) to maintain productivity and reduce contamination risks. Yet, as automation becomes more deeply integrated into these controlled environments, ensuring safe human-robot interaction has emerged as a critical challenge.

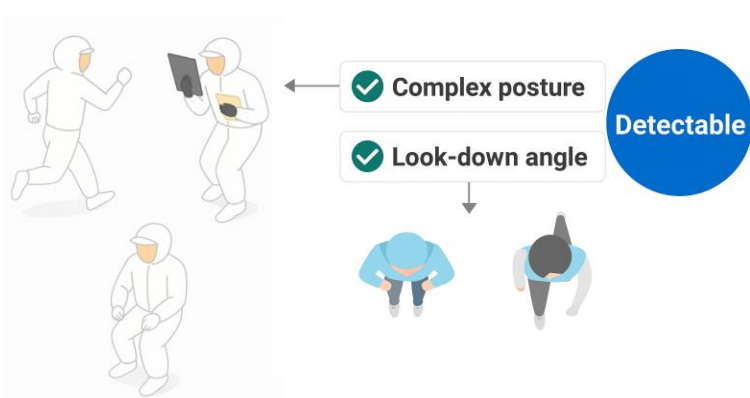


Human workers remain a major source of both contamination and safety hazards, requiring real-time monitoring to prevent unexpected behaviors, unsafe actions, or accidental entry into robotic operating zones.

Human detection is no longer optional, but is becoming increasingly in demand as a feature to protect both people and automation systems in the increasingly sophisticated cleanroom environments of the factory automation industry.

### Features & Benefits

#### Feature 01 Highly accurate body detection



#### Feature 02 Easy installation



#### Feature 03 No image transfer required



#### With OMRON sensor method!

- Highly accurate detection is possible even with special work clothes and from a look-down angle.
- Machines are not detected. Only humans can be detected reliably.
- Multiple units can be installed at a relatively low cost.

### Applications



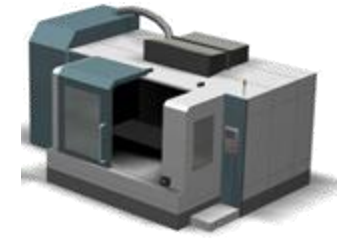
Semiconductor inspection equipment site



Food processing factories



Various Inspection Equipment site



Various Industrial Equipment site

### Specifications

Model Number	B5T-007003-010	B5T-007003-020
Lens Angle	Approximately 50 deg. (Long distance type)	Approximately 90 deg. (Wide-angle type)
Supply Voltage	5VDC ± 10%	
Communication System	USB 2.0 / UART	
Detection Resolution	1,600 × 1,200 pixels	
Horizontal Detection Range (Angle of View)	54° ± 3°	94° ± 5°
Vertical Detection Range (Angle of View)	41° ± 3°	76° ± 5°
Output Image	No Output / 160 × 120 pixels / 320 × 240 pixels (Chose one)	
Image format	RAW (8bits, Y data)	

Note) For detailed specifications, please refer to each data sheet.

#### Product WEB Page



#### Special Content

