

CHD 14 (2-PIN)

Aluminum alloy housing
Contacts: copper alloy, silver plating

Specifications

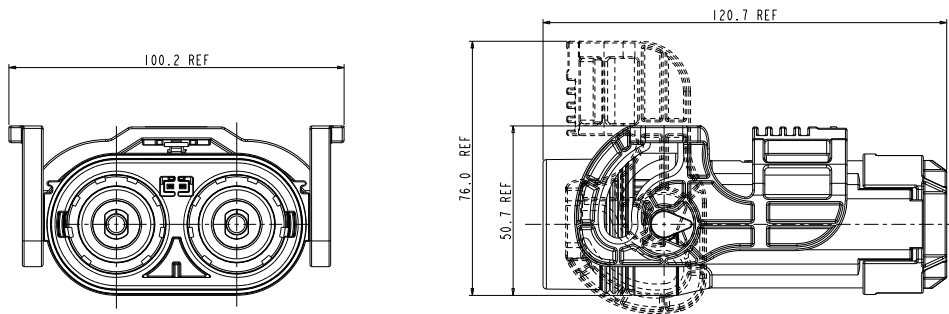
Current rate (70mm ² shield cable):	250A@ ambient temperature 70°C	Durability:	50 cycles Min
Current rate (95mm ² shield cable):	350A@ ambient temperature 70°C	Shielding:	Yes
Current rate (120mm ² shield cable):	430A@ ambient temperature 70°C	Waterproof (mated):	IP67, IP6K9K
Current rate (150mm ² shield cable):	500A@ ambient temperature 70°C	(unmated sockets):	IP67
Rating voltage:	1500V DC	Touch-proof:	IP2XB
Operating temperature:	-40 to 125°C	Ambient temperature:	-40 to 70°C
Salt spray:	500h Min		

Plug

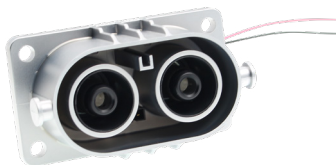


CHD	14	06	2	X	X	XX
-----	----	----	---	---	---	----

A: coding A 0: without HVIL 01: 150mm²
 B: coding B 1: with HVIL 02: 120mm²
 C: coding C 03: 95mm²
 04: 70mm²



Receptacle



CHD	14	02	2	X	X	01
-----	----	----	---	---	---	----

A: coding A 0: without HVIL
 B: coding B 1: with HVIL
 C: coding C

