

Asia Pacific

ChangZhou,China

Tel:+86 519-8981 9713

Email: sales@amphenol-gec.com

Add: No.11 Fengxiang Road, New District,
Changzhou,Jiangsu,China

P.C:213001

GuangZhou,China

Tel:+86 20-3210 6099

Add:9th Floor, No.10, the 4th Street,Kehui
Jingu, Huangpu District,Guangzhou,China

P.C:510663

North America

Winnipeg,Canada

Tel:+1 204 697 2222

Email: sales@tpil.com

Add:2110 Notre Dame Avenue

Nogales, Mexico

Tel:+52(55) 5258 9984

Add:482 Mariposa Road Building A,85621

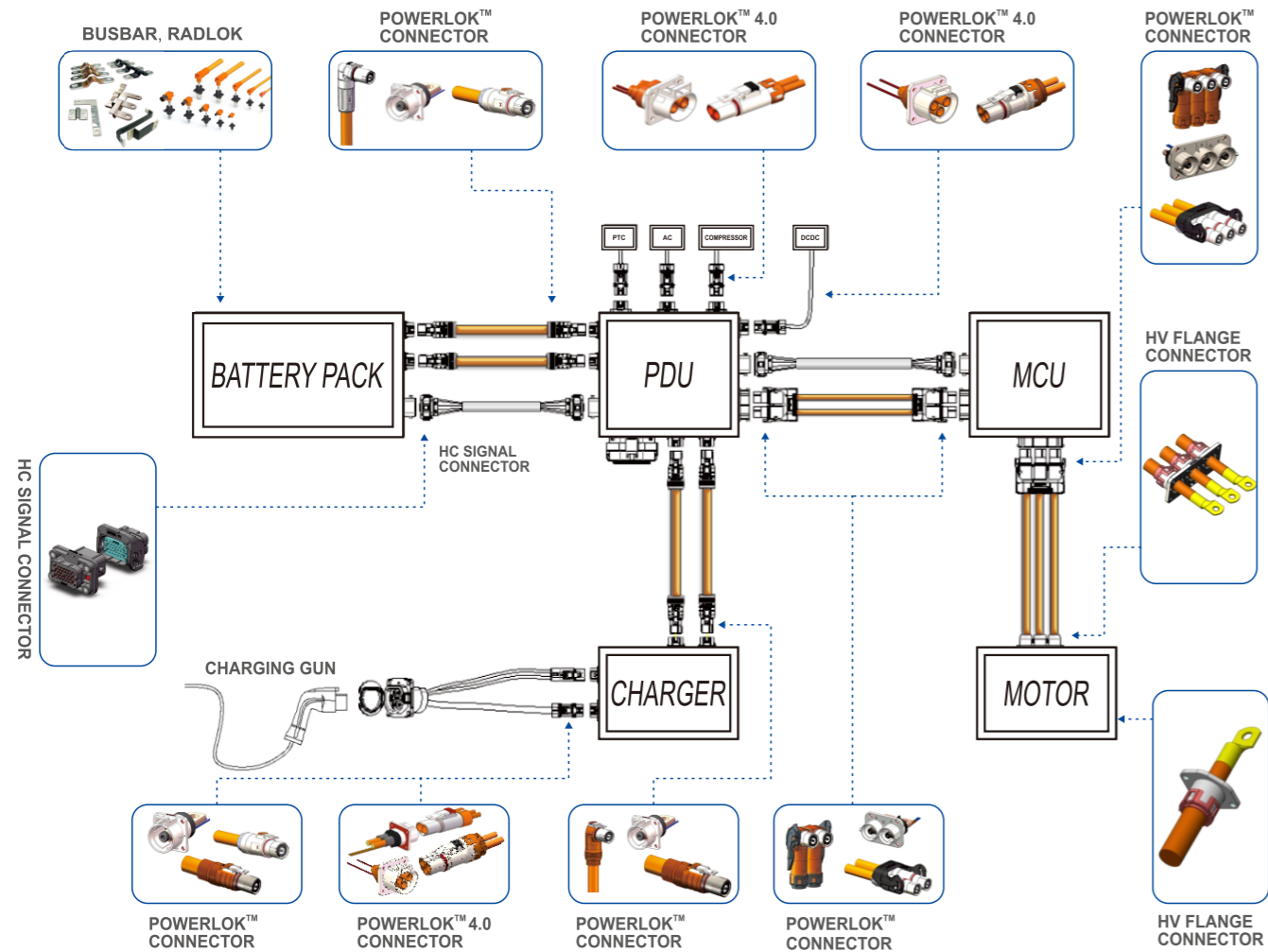
Website:www.tpil.com www.amphenol-
gec.com



PowerLok™ Connector

PowerLok™ Connector

SYSTEM CONNECTION SKETCH



Application

POWERLOK™ series is a low cost, compact, metal-shell interconnect solution utilizing RADSOK® contact technology for EV and Hybrid transportation application. Up to 1000V ranging from 90A-500A with HVIL, 360° shielding, environmental sealing, keying, straight and right angle configurations, and up to 3 power circuits. Accommodates cable size from 16mm² to 150mm² with and without shielding. Available in assembled and overmolded versions.

POWERLOK™ series connectors are engineered for diverse applications as its wide power range coverage, including electric powertrains of automotive, trucks, bus, agricultural and construction machines, and off-road vehicles. Furthermore, POWERLOK™ series are also widely employed in stationary energy storage systems.

Key Features

- High Voltage Inter Lock
- 360° shielding
- 1POS, 2POS, 3POS Positions Available
- 90D(Right angle) and 180D(Straight angle)
- Multiple keys available
 - 1POS (X, Y, U, V, W, T keys)
 - 2POS & 3POS (X, Y keys)
- RADSOK® contact technology
- RoHS/REACH Compliant
- Mating Cycle: 100Min
- Mating Force: 75N MAX.
- Voltage Rating: 1000VDC
- DC Current Rating: 120A,200A,300A, 500A
- Insulation Resistance: 500MΩ
- IP rating: IP67(mated)
IP2X(unmated)
- Salt Spray: 48h
- Temperature range: -40°C--+125°C

PowerLok™ Recommended Cable Size & Current Rating

Series	Accepted Cable Size	Current Rating
120 Series	16mm ²	90A
	25mm ²	120A
200 Series	25mm ²	120A
	35mm ²	150A
	50mm ²	200A
300 Series	35mm ²	150A
	50mm ²	200A
	70mm ²	250A
500 Series	95mm ²	300A
	70mm ²	250A
	95mm ²	300A
	120mm ²	400A
	135mm ²	450A
	150mm ²	500A

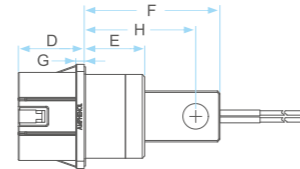
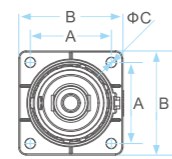
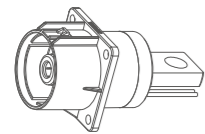
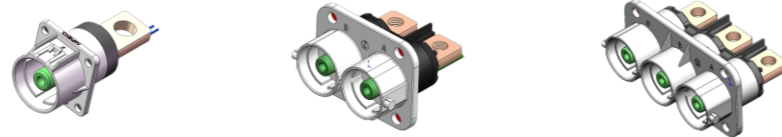
*Customization is allowed if above sizes are not what you need.

PowerLok™ Receptacle

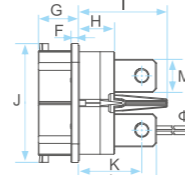
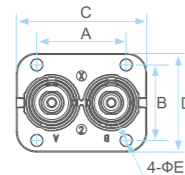
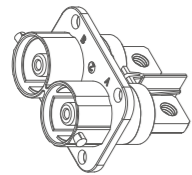


Series	180 Degree BusBar Lug						Thread Pin			Tubular Lug			90 Degree Busbar Lug	
	1POS		2POS		3POS		1POS	2POS		3POS		1POS	W/O HVIL	
	With HVIL	W/O HVIL	With HVIL	W/O HVIL	With HVIL	W/O HVIL	With HVIL	W/O HVIL	With HVIL	W/O HVIL	With HVIL	W/O HVIL	With HVIL	W/O HVIL
120A	*	*	*	*			*					*		
200A	*	*	*	*			*					*		
300A	*	*	*	*	*	*	*	*	*	*	*	*	*	*
500A	*	*					*					*		*

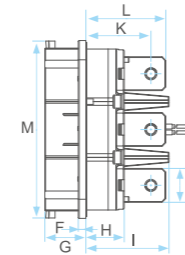
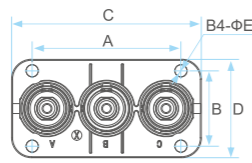
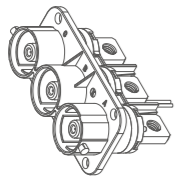
180 Degree Busbar Lug Receptacle



Product	180 Degree Busbar Lug 1POS Dimensions(mm)								
	Series	A	B	C	D	E	F	G	H
PowerLok™ 1POS 180 Degree Busbar Lug Receptacle	120A	20.0	28.0	φ3.6	18.0	13.0	31.5	3.0	24.5
	200A	25.0	33.0	φ4.2	20.7	19.3	39.5	3.0	32.3
	300A	27.0	35.0	φ4.2	20.7	21.3	49.3	3.0	39.3
	500A	33.5	43.0	φ4.3	27.2	25.0	56.0	3.5	46.0

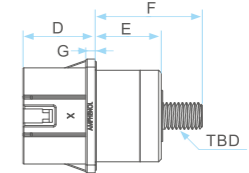
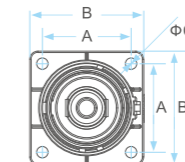
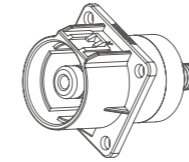
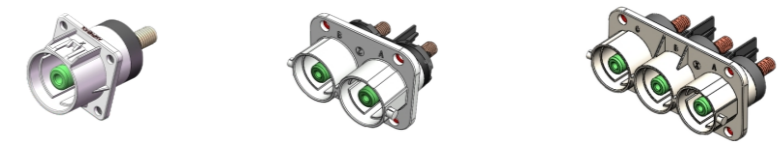


Product	180 Degree Busbar Lug 2POS Dimensions(mm)													
	Series	A	B	C	D	E	F	G	H	I	J	K	L	M
PowerLok™ 2POS 180 Degree Busbar Lug Receptacle	120A	35.0	25.5	48.0	34.0	φ3.6	3.0	18.5	14.5	29.5	49.0	23.5	33.0	9.8
	300A	45.0	38.0	65.6	49.6	φ6.2	4.0	22.0	20.0	49.0	65.4	35.0	43.0	18.2

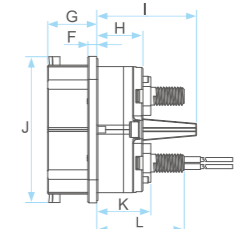
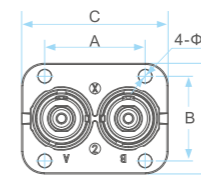
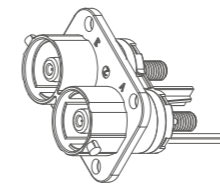


Product	180 Degree Busbar Lug 3POS Dimensions(mm)													
	Series	A	B	C	D	E	F	G	H	I	J	K	L	M
PowerLok™ 3POS 180 Degree Busbar Lug Receptacle	300A	75.0	38.0	95.6	49.6	φ10.0	4.0	22.0	20.7+1.0	44.7+0.1	18.2	35.0+0.1	43.0+0.1	95.6

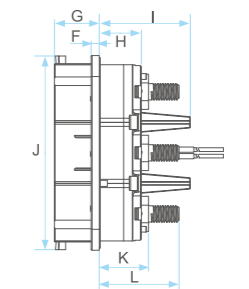
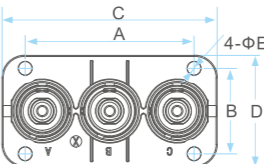
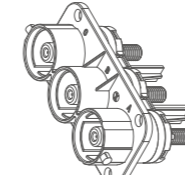
Thread Pin Receptacle



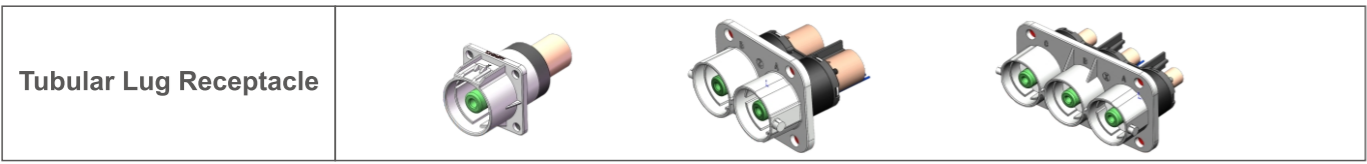
Product	Thread Pin 1POS Dimensions(mm)							
	Series	A	B	C	D	E	F	G
PowerLok™ 1POS Thread Pin Receptacle	120A	20.0	28.0	φ3.6	18.0	13.0	32.0	3.0
	300A	27.0	35.0	φ4.2	20.7	21.3	38.1	3.0
	500A	33.5	43.0	φ4.3	27.2	25.0	40.5	3.5



Product	Thread Pin 2POS Dimensions(mm)												
	Series	A	B	C	D	E	F	G	H	I	J	K	L
PowerLok™ 2POS Thread Pin Receptacle	300A	45.0	38.0	65.6	49.6	φ6.2	4.0	22.0	20.7±0.1	44.7±0.1	65.4	24.2±0.1	39.2±0.1



Product	Thread Pin 3POS Dimensions(mm)												
	Series	A	B	C	D	E	F	G	H	I	J	K	L
PowerLok™ 3POS Thread Pin Receptacle	300A	75.0	38.0	95.6	49.6	φ6.2	4.0	22.0	20.7±0.1	44.7±0.1	95.1	24.2±0.1	39.2±0.1



Product	Tubular Lug 1POS Dimensions(mm)							
	Series	A	B	C	D	E	F	G
PowerLok™ 1POS Tubular Lug Receptacle	120A	20.0	28.0	φ3.6	18.0	13.0	27.5	3.0
	300A	27.0	35.0	φ4.2	20.7	21.3	TBD	3.0
	500A	33.5	43.0	φ4.3	27.2	25.0	46.5	4.5

Product	Tubular Lug 2POS Dimensions(mm)										
	Series	A	B	C	D	E	F	G	H	I	J
PowerLok™ 2POS Tubular Lug Receptacle	300A	45.0	38.0	65.6	49.6	φ6.2	4.0	22.0	20.7	44.7	65.4

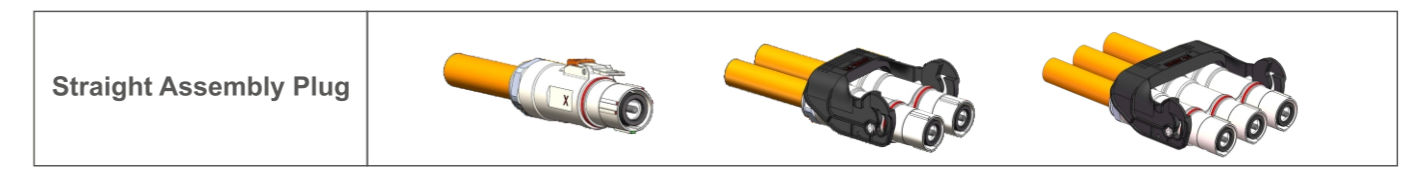
Product	Tubular Lug 3POS Dimensions(mm)										
	Series	A	B	C	D	E	F	G	H	I	J
PowerLok™ 3POS Tubular Lug Receptacle	300A	75.0	38.0	95.6	49.6	φ6.2	4.0	22.0	20.7	44.7	95.1



Product	90 Degree Busbar 1POS Dimensions(mm)								
	Series	A	B	C	D	E	F	G	H
PowerLok™ 1POS 90 Degree Busbar Receptacle	300A	27.0	35.0	φ4.2	20.7	24.1	49.3	3.0	39.3
	500A	33.5	43.0	φ4.3	20.7	25.0	56.0	3.5	46.0

PowerLok™ Plug

Series	1POS				2POS				3POS			
	Assembly		Overmolded		Assembly		Overmolded		Assembly		Overmolded	
	Straight	Right Angle	Straight	Right Angle	Straight	Right Angle	Straight	Right Angle	Straight	Right Angle	Straight	Right Angle
120A			*	*			*	*				
200A	*	*										
300A	*	*	*	*	*	*			*	*		
500A	*	*	*	*								



Product	1POS Straight Assembly Plug Dimensions(mm)				
	Series	A	B	D	E(REF)
PowerLok™ 1POS Straight Assembly Plug	200A	29.8	54.3	φ25.9	30.9
	300A	31.0	63.1	φ29.5	34.4
	500A	41.1	77.0	φ39.0	43.5

Product	2POS Straight Assembly Plug Dimensions(mm)				
	Series	A	B	C	D
PowerLok™ 2POS Straight Assembly Plug	300A	70.5	38.8	31.0	59.6

Product	3POS Straight Assembly Plug Dimensions(mm)				
	Series	A	B	D	E
PowerLok™ 3POS Straight Assembly Plug	300A	31.0	59.6	100.5	38.0

Right Angle Assembly Plug																									
Product	1POS Right Angle Assembly Plug Dimensions(mm)																								
	<table border="1"> <thead> <tr> <th>Series</th> <th>A</th> <th>C</th> <th>D</th> <th>F(REF)</th> <th>W</th> </tr> </thead> <tbody> <tr> <td>PowerLok™ 1POS Right Angle Assembly Plug 200A</td> <td>29.8</td> <td>34.7</td> <td>Φ25.9</td> <td>93.5</td> <td>75.6</td> </tr> <tr> <td>300A</td> <td>31.0</td> <td>37.6</td> <td>Φ29.5</td> <td>97.7</td> <td>78.1</td> </tr> <tr> <td>500A</td> <td>41.1</td> <td>47.7</td> <td>Φ38.2</td> <td>118.1</td> <td>93.7</td> </tr> </tbody> </table>	Series	A	C	D	F(REF)	W	PowerLok™ 1POS Right Angle Assembly Plug 200A	29.8	34.7	Φ25.9	93.5	75.6	300A	31.0	37.6	Φ29.5	97.7	78.1	500A	41.1	47.7	Φ38.2	118.1	93.7
Series	A	C	D	F(REF)	W																				
PowerLok™ 1POS Right Angle Assembly Plug 200A	29.8	34.7	Φ25.9	93.5	75.6																				
300A	31.0	37.6	Φ29.5	97.7	78.1																				
500A	41.1	47.7	Φ38.2	118.1	93.7																				
Product	2POS Right Angle Assembly Plug Dimensions(mm)																								
PowerLok™ 2POS Right Angle Assembly Plug	<table border="1"> <thead> <tr> <th>Series</th> <th>A</th> <th>D</th> <th>E</th> <th>F</th> <th>G</th> </tr> </thead> <tbody> <tr> <td>300A</td> <td>31.0</td> <td>70.5</td> <td>34.8</td> <td>103.3</td> <td>79.4</td> </tr> </tbody> </table>	Series	A	D	E	F	G	300A	31.0	70.5	34.8	103.3	79.4												
Series	A	D	E	F	G																				
300A	31.0	70.5	34.8	103.3	79.4																				
Product	3POS Right Angle Assembly Plug Dimensions(mm)																								
PowerLok™ 3POS Right Angle Assembly Plug	<table border="1"> <thead> <tr> <th>Series</th> <th>A</th> <th>C</th> <th>D</th> <th>F</th> <th>G</th> </tr> </thead> <tbody> <tr> <td>300A</td> <td>31.0</td> <td>38.0</td> <td>100.5</td> <td>103.3</td> <td>79.4</td> </tr> </tbody> </table>	Series	A	C	D	F	G	300A	31.0	38.0	100.5	103.3	79.4												
Series	A	C	D	F	G																				
300A	31.0	38.0	100.5	103.3	79.4																				

Note

Amphenol TPI can provide customized solutions based on customer's installation space. If you need to order or ask questions, please contact your sales representative for additional information!

Straight Overmolded Plug																													
Product	1POS Straight Overmolded Plug Dimensions(mm)																												
	<table border="1"> <thead> <tr> <th>Series</th> <th>A</th> <th>B</th> <th>D</th> <th>E</th> <th>G</th> </tr> </thead> <tbody> <tr> <td>PowerLok™ 1POS Straight Overmolded Plug 120A</td> <td>22.5</td> <td>39.0</td> <td>Φ24.6</td> <td>28.5</td> <td>9.9</td> </tr> <tr> <td>300A</td> <td>31.0</td> <td>45.0</td> <td>Φ32.0</td> <td>35.6</td> <td>9.9</td> </tr> <tr> <td>500A</td> <td>41.1</td> <td>52.0</td> <td>Φ42.0</td> <td>43.6</td> <td>9.9</td> </tr> </tbody> </table>	Series	A	B	D	E	G	PowerLok™ 1POS Straight Overmolded Plug 120A	22.5	39.0	Φ24.6	28.5	9.9	300A	31.0	45.0	Φ32.0	35.6	9.9	500A	41.1	52.0	Φ42.0	43.6	9.9				
Series	A	B	D	E	G																								
PowerLok™ 1POS Straight Overmolded Plug 120A	22.5	39.0	Φ24.6	28.5	9.9																								
300A	31.0	45.0	Φ32.0	35.6	9.9																								
500A	41.1	52.0	Φ42.0	43.6	9.9																								
Product	2POS Straight Overmolded Plug Dimensions(mm)																												
PowerLok™ 2POS Straight Overmolded Plug	<table border="1"> <thead> <tr> <th>Series</th> <th>A</th> <th>B</th> <th>C</th> <th>D</th> <th>E</th> </tr> </thead> <tbody> <tr> <td>120A</td> <td>22.5</td> <td>57.0</td> <td>29.7</td> <td>52.5</td> <td>51.0</td> </tr> </tbody> </table>	Series	A	B	C	D	E	120A	22.5	57.0	29.7	52.5	51.0																
Series	A	B	C	D	E																								
120A	22.5	57.0	29.7	52.5	51.0																								
Product	1POS Right Angle Overmolded Plug Dimensions(mm)																												
	<table border="1"> <thead> <tr> <th>Series</th> <th>A</th> <th>C</th> <th>D</th> <th>F(PEF)</th> <th>W</th> <th>G</th> </tr> </thead> <tbody> <tr> <td>PowerLok™ 1POS Right Angle Overmolded Plug 120A</td> <td>22.5</td> <td>25.3</td> <td>Φ24.6</td> <td>55.8</td> <td>40.0</td> <td>9.9</td> </tr> <tr> <td>300A</td> <td>31.0</td> <td>32.5</td> <td>Φ32.0</td> <td>69.6</td> <td>50.0</td> <td>9.9</td> </tr> <tr> <td>500A</td> <td>41.1</td> <td>43.0</td> <td>Φ42.0</td> <td>78.6</td> <td>55.0</td> <td>9.9</td> </tr> </tbody> </table>	Series	A	C	D	F(PEF)	W	G	PowerLok™ 1POS Right Angle Overmolded Plug 120A	22.5	25.3	Φ24.6	55.8	40.0	9.9	300A	31.0	32.5	Φ32.0	69.6	50.0	9.9	500A	41.1	43.0	Φ42.0	78.6	55.0	9.9
Series	A	C	D	F(PEF)	W	G																							
PowerLok™ 1POS Right Angle Overmolded Plug 120A	22.5	25.3	Φ24.6	55.8	40.0	9.9																							
300A	31.0	32.5	Φ32.0	69.6	50.0	9.9																							
500A	41.1	43.0	Φ42.0	78.6	55.0	9.9																							
Product	2POS Right Angle Overmolded Plug Dimensions(mm)																												
PowerLok™ 2POS Right Angle Overmolded Plug	<table border="1"> <thead> <tr> <th>Series</th> <th>A</th> <th>B</th> <th>C</th> <th>D</th> <th>E</th> </tr> </thead> <tbody> <tr> <td>120A</td> <td>22.5</td> <td>31.2</td> <td>70.0</td> <td>52.5</td> <td>53.0</td> </tr> </tbody> </table>	Series	A	B	C	D	E	120A	22.5	31.2	70.0	52.5	53.0																
Series	A	B	C	D	E																								
120A	22.5	31.2	70.0	52.5	53.0																								

PowerLok™ Connector Key Map

1POS-120A

M direction schematic

1POS-200A

M direction schematic

1POS-300A

M direction schematic

1POS-500A (Assembly)

M direction schematic

1POS-500A (Overmolded)

M direction schematic

2POS-120A

M direction schematic

2POS-300A

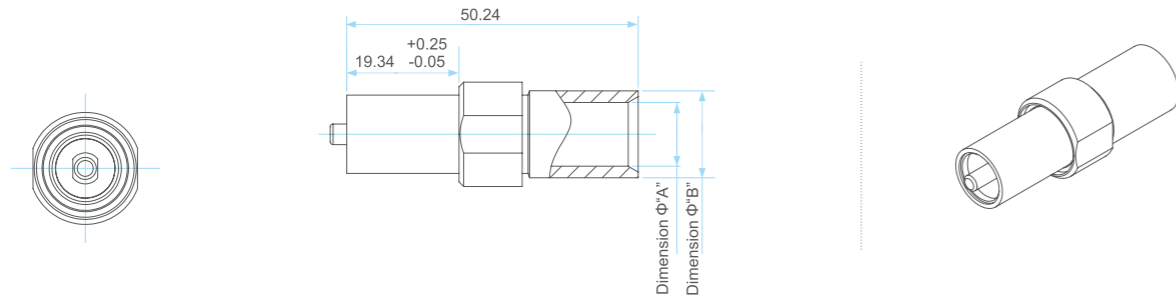
M direction schematic

3POS-300A

M direction schematic

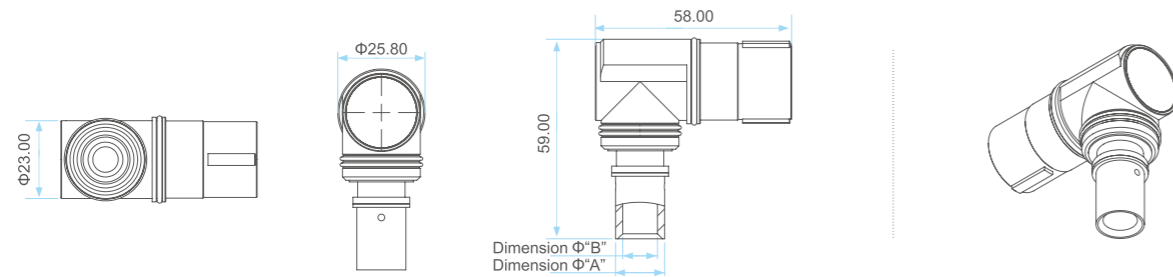
PowerLok™ Terminal

300A 1POS&2POS&3POS Straight



Part Number	Dimension "A"	Dimension "B"	Cable Size
AC-CP001017	7.50	10.00	25mm ²
AC-CP000872	8.80	11.80	35mm ²
AC-CP000689	9.00	12.00	35mm ²
AC-CP001018	10.30	14.50	50mm ²
AC-CP000876	11.00	15.00	50mm ²
AC-CP000871	12.50	16.50	70mm ²
AC-CP000878	12.50	16.80	70mm ²

300A 2POS&3POS Right Angle



Part Number	Dimension "A"	Dimension "B"	Cable Size
AC-CP000994	14.5	10.3	50mm ²
AC-CP000995	14.5	10.3	50mm ²
AC-CP000996	16.5	12.5	70mm ²

Ordering Information-PowerLok™ 1POS Receptacle W/O HVIL

Product Type	Connector Type	Key (Touch Proof Cover Color)		Current & HVIL		Termination Type		Termination Size	
		X	Y	120	120A W/O HVIL	10	180 Degree Busbar Lug	D ⁽¹⁾ +Stud Size	
PowerLok™	00	1POS Receptacle	U	Black	200	200A W/O HVIL	20	Thread Pin	M ⁽²⁾ +Stud Size
			V	Yellow	300	300A W/O HVIL	30	Tubular Lug	D+Cable Size
			W	Green	500	500A W/O HVIL	90	90 Degree Busbar Lug	D+Stud Size
			T	Red					M+Stud Size
				Blue					M+Stud Size

W/O HVIL													
Series	Key	Busbar Lug(D+Stud Size)			Busbar Lug(M+Stud Size)			Thread Pin(M+Thread Size)			Tubular Lug(D+Cable Size)		
		Termination	Description	Part Number	Termination	Description	Part Number	Termination	Description	Part Number	Termination	Description	Part Number
120A	X	D6	PL00X-120-10D6	AC-HA000469	M6	PL00X-120-10M6	AC-HA000479	M6	PL00X-120-20M6	AC-HA000563	D25	PL00X-120-30D25	AC-HA001813
	Y		PL00Y-120-10D6	AC-HA000470		PL00Y-120-10M6	AC-HA000480		PL00Y-120-20M6	AC-HA000564		PL00Y-120-30D25	AC-HA001814
	U		PL00U-120-10D6	AC-HA000471		PL00U-120-10M6	AC-HA000481		PL00U-120-20M6	AC-HA000565		PL00U-120-30D25	AC-HA001815
	V		PL00V-120-10D6	AC-HA000472		PL00V-120-10M6	AC-HA000482		PL00V-120-20M6	AC-HA000566		PL00V-120-30D25	AC-HA001816
	W		PL00W-120-10D6	AC-HA000473		PL00W-120-10M6	AC-HA000483		PL00W-120-20M6	AC-HA000567		PL00W-120-30D25	AC-HA001817
200A	X		-	-	M6	PL00X-200-10M6	PL00X-200-10M6		-	-		-	-
	Y		-	-		PL00Y-200-10M6	PL00Y-200-10M6		-	-		-	-
	U		-	-		PL00U-200-10M6	PL00U-200-10M6		-	-		-	-
	V		-	-		PL00V-200-10M6	PL00V-200-10M6		-	-		-	-
	W		-	-		PL00W-200-10M6	PL00W-200-10M6		-	-		-	-
300A	X	D6	PL00X-300-10D6	AC-HA0003928	M6	PL00X-300-10M6	AC-HA0003922	M8	PL00X-300-20M8	AC-HA000596	D35	PL00X-300-30D35	AC-HA001454
	Y		PL00Y-300-10D6	AC-HA0003929		PL00Y-300-10M6	AC-HA0003923		PL00Y-300-20M8	AC-HA000597		PL00Y-300-30D35	AC-HA001455
	U		PL00U-300-10D6	AC-HA0003930		PL00U-300-10M6	AC-HA0003924		PL00U-300-20M8	AC-HA000598		PL00U-300-30D35	AC-HA001456
	V		PL00V-300-10D6	AC-HA0003931		PL00V-300-10M6	AC-HA0003925		PL00V-300-20M8	AC-HA000599		PL00V-300-30D35	AC-HA001457
	W		PL00W-300-10D6	AC-HA0003932		PL00W-300-10M6	AC-HA0003926		PL00W-300-20M8	AC-HA000600		PL00W-300-30D35	AC-HA001458
500A	X	D8	PL00X-500-10D8	AC-HA0002182	M8	PL00X-500-10M8	AC-HA0002511	M8	PL00X-500-20M8	AC-HA000578	D95	PL00X-500-30D95	AC-HA011391
	Y		PL00Y-500-10D8	AC-HA0002183		PL00Y-500-10M8	AC-HA0002512		PL00Y-500-20M8	AC-HA000579		PL00Y-500-30D95	AC-HA011392
	U		PL00U-500-10D8	AC-HA000556		PL00U-500-10M8	AC-HA0002513		PL00U-500-20M8	AC-HA000580		PL00U-500-30D95	AC-HA011393
	V		PL00V-500-10D8	AC-HA000557		PL00V-500-10M8	AC-HA0002514		PL00V-500-20M8	AC-HA000581		PL00V-500-30D95	AC-HA011394
	W		PL00W-500-10D8	AC-HA000558		PL00W-500-10M8	AC-HA0002515		PL00W-500-20M8	AC-HA000582		PL00W-500-30D95	AC-HA011395

(1) D=Through hole ; (2) M=Screw hole

Ordering Information-PowerLok™ 1POS Receptacle W/O HVIL (90 Degree Busbar Lug)

Product Type		Connector Type		Key (Touch Proof Cover Color)		Current & HVIL		Termination Type		Termination Size	
PowerLok™	00	1POS Receptacle	X	Orange	300	300A W/O HVIL	90	90 Degree			D+Stud Size
			Y	Black							M+Stud Size
			U	Yellow	500	500A W/O HVIL					
			V	Green							
			W	Red							
T	Blue										

Continued W/O HVIL

Series Key	90D Busbar Lug+(D+Stud Size)				90D Busbar Lug+(M+Stud Size)				
	Termination	Description	Part Number	Termination	Description	Part Number	Termination	Description	Part Number
300A	D6	PL00X-300-90D6	AC-HA004032	M6	PL00X-300-90M6	AC-HA004050			
		PL00Y-300-90D6	AC-HA004033		PL00Y-300-90M6	AC-HA004051			
		PL00U-300-90D6	AC-HA004034		PL00U-300-90M6	AC-HA004052			
		PL00V-300-90D6	AC-HA004035		PL00V-300-90M6	AC-HA004053			
		PL00W-300-90D6	AC-HA004036		PL00W-300-90M6	AC-HA004054			
		PL00T-300-90D6	AC-HA004037		PL00T-300-90M6	AC-HA004055			
	D8	PL00X-300-90D8	AC-HA004026	M8	PL00X-300-90M8	AC-HA004044			
		PL00Y-300-90D8	AC-HA004027		PL00Y-300-90M8	AC-HA004045			
		PL00U-300-90D8	AC-HA004028		PL00U-300-90M8	AC-HA004046			
		PL00V-300-90D8	AC-HA004029		PL00V-300-90M8	AC-HA004047			
		PL00W-300-90D8	AC-HA004030		PL00W-300-90M8	AC-HA004048			
		PL00T-300-90D8	AC-HA004031		PL00T-300-90M8	AC-HA004049			
D10	PL00X-300-90D10	AC-HA004020	M10	PL00X-300-90M10	AC-HA004038				
	PL00Y-300-90D10	AC-HA004021		PL00Y-300-90M10	AC-HA004039				
	PL00U-300-90D10	AC-HA004022		PL00U-300-90M10	AC-HA004040				
	PL00V-300-90D10	AC-HA004023		PL00V-300-90M10	AC-HA004041				
	PL00W-300-90D10	AC-HA004024		PL00W-300-90M10	AC-HA004042				
	PL00T-300-90D10	AC-HA004025		PL00T-300-90M10	AC-HA004043				
500A	D8	PL00X-500-90D8	AC-HA007831	M8	PL00X-500-90M8	AC-HA007836			
		PL00Y-500-90D8	AC-HA007832		PL00Y-500-90M8	AC-HA007837			
		PL00U-500-90D8	AC-HA007833		PL00U-500-90M8	AC-HA007838			
		PL00V-500-90D8	AC-HA007834		PL00V-500-90M8	AC-HA007839			
		PL00W-500-90D8	AC-HA007835		PL00W-500-90M8	AC-HA007840			
		PL00T-500-90D8	AC-HA007841		PL00T-500-90M8	AC-HA007846			
	D10	PL00Y-500-90D10	AC-HA007842	M10	PL00Y-500-90M10	AC-HA007847			
		PL00U-500-90D10	AC-HA007843		PL00U-500-90M10	AC-HA007848			
		PL00V-500-90D10	AC-HA007844		PL00V-500-90M10	AC-HA007849			
		PL00W-500-90D10	AC-HA007845		PL00W-500-90M10	AC-HA007850			

Ordering Information-PowerLok™ 1POS Receptacle With HVIL

Product Type		Connector Type		Key (Touch Proof Cover Color)		Current & HVIL		Termination Type		Termination Size	
PowerLok™	00	1POS Receptacle	X	Orange	121	120A With HVIL	90	90 Degree Busbar Lug	10	180 Degree Busbar Lug	D + Stud Size
			Y	Black							M + Stud Size
			U	Yellow	201	200A With HVIL			20	Thread Pin	M + Stud Size
			V	Green							
			W	Red							
			T	Blue	501	500A With HVIL			90	90 Degree Busbar Lug	M + Stud Size

With HVIL

Series Key	Busbar Lug(D+Stud Size)				Busbar Lug(M+Stud Size)				90D Busbar Lug+(D+Stud Size)				90D Busbar Lug+(M+Stud Size)												
	Termination	Description	Part Number	Termination	Description	Part Number	Termination	Description	Part Number	Termination	Description	Part Number	Termination	Description	Part Number										
120A	D6	PL00X-121-10D6	AC-HA000305	M6	PL00X-121-10M6	AC-HA000459																			
		PL00Y-121-10D6	AC-HA000306		PL00Y-121-10M6	AC-HA000460																			
		PL00U-121-10D6	AC-HA000307		PL00U-121-10M6	AC-HA000461																			
		PL00V-121-10D6	AC-HA000308		PL00V-121-10M6	AC-HA000462																			
		PL00W-121-10D6	AC-HA000309		PL00W-121-10M6	AC-HA000463																			
200A	D8	PL00X-201-10D8	AC-HA004320	M8	PL00X-201-10M8	AC-HA004321																			
		PL00Y-201-10D8	AC-HA004321		PL00Y-201-10M8	AC-HA004322																			
		PL00U-201-10D8	AC-HA004322		PL00U-201-10M8	AC-HA004323																			
		PL00V-201-10D8	AC-HA004323		PL00V-201-10M8	AC-HA004324																			
		PL00W-201-10D8	AC-HA004324		PL00W-201-10M8	AC-HA004325																			
300A	D6	PL00X-301-10D6	AC-HA003940	M6	PL00X-301-10M6	AC-HA003934																			
		PL00Y-301-10D6	AC-HA003941		PL00Y-301-10M6	AC-HA003935																			
		PL00U-301-10D6	AC-HA003942		PL00U-301-10M6	AC-HA003936																			
		PL00V-301-10D6	AC-HA003943		PL00V-301-10M6	AC-HA003937																			
		PL00W-301-10D6	AC-HA003944		PL00W-301-10M6	AC-HA003938																			
		PL00T-301-10D6	AC-HA003945		PL00T-301-10M6	AC-HA003939																			
		PL00X-301-10D8	AC-HA001088		M8	PL00X-301-10M8										AC-HA001976									
		PL00Y-301-10D8	AC-HA001089			PL00Y-301-10M8										AC-HA001977									
		PL00U-301-10D8	AC-HA001090			PL00U-301-10M8										AC-HA001978									
		PL00V-301-10D8	AC-HA001091			PL00V-301-10M8										AC-HA001979									
	PL00W-301-10D8	AC-HA001092	PL00W-301-10M8	AC-HA001980																					
	PL00T-301-10D8	AC-HA001388	PL00T-301-10M8	AC-HA001981																					
	PL00X-301-10D10	AC-HA000454	M10	PL00X-301-10M10		AC-HA000300																			
	PL00Y-301-10D10	AC-HA000455		PL00Y-301-10M10		AC-HA000301																			
	PL00U-301-10D10	AC-HA000456		PL00U-301-10M10		AC-HA000302																			
	PL00V-301-10D10	AC-HA000457		PL00V-301-10M10		AC-HA000303																			
	PL00W-301-10D10	AC-HA000458		PL00W-301-10M10	AC-HA000304																				
	PL00T-301-10D10	AC-HA001382		PL00T-301-10M10	AC-HA001383																				
	500A	D8		PL00X-501-10D8	AC-HA000568	M8										PL00X-501-10M8	AC-HA002460								
				PL00Y-501-10D8	AC-HA000569											PL00Y-501-10M8	AC-HA002461								
PL00U-501-10D8				AC-HA000570	PL00U-501-10M8											AC-HA002462									
PL00V-501-10D8				AC-HA000571	PL00V-501-10M8											AC-HA002463									
PL00W-501-10D8			AC-HA000572	PL00W-501-10M8	AC-HA002464																				
D10		PL00X-501-10D10	AC-HA000489	M10	PL00X-501-10M10		AC-HA000494																		
		PL00Y-501-10D10	AC-HA000490		PL00Y-501-10M10		AC-HA000495																		
		PL00U-501-10D10	AC-HA000491		PL00U-501-10M10		AC-HA000496																		
		PL00V-501-10D10	AC-HA000492		PL00V-501-10M10		AC-HA000497																		
		PL00W-501-10D10	AC-HA000493		PL00W-501-10M10		AC-HA000498																		

With HVIL

Series Key	Thread Pin+(M+Stud Size)				Thread Pin+(M+Stud Size)				
	Termination	Description	Part Number	Termination	Description	Part Number	Termination	Description	Part Number
300A	M8	PL00X-301-20M8	AC-HA021540	M10	PL00X-301-20M10	AC-HA021557			
		PL00Y-301-20M8	AC-HA021541		PL00Y-301-20M10	AC-HA021558			
		PL00U-301-20M8	AC-HA021542		PL00U-301-20M10	AC-HA021559			
		PL00V-301-20M8	AC-HA021543		PL00V-301-20M10	AC-HA021560			
		PL00W-301-20M8	AC-HA021544		PL00W-301-20M10	AC-HA021561			
		PL00T-301-20M8	AC-HA021545		PL00T-301-20M10	AC-HA021562			

Ordering Information-PowerLok™ 2POS Receptacle

PL 08 2X - 300 - 10 M10

Product Type	Connector Type	Key (Touch Proof Cover Color)	Current & HVIL	Termination Type	Termination Size
PowerLok™	08 2POS Receptacle	2X Orange	120 120 A W/O HVIL	10 Busbar Lug	D+Stud Size
			121 120 A With HVIL		M+Stud Size
		2Y Black	300 300 A W/O HVIL	20 Thread Pin	M+Thread Size
			301 300 A With HVIL		30 Tubular Lug

W/O HVIL

Series Key	Busbar Lug+(D+Stud Size)			Busbar Lug+(M+Stud Size)			Thread Pin+(M+Thread Size)			Tubular Lug+(D+Cable Size)			
	Termination	Description	Part Number	Termination	Description	Part Number	Termination	Description	Part Number	Termination	Description	Part Number	
120A	X	D6	PL082X-120-10D6 AC-HA000771	M6	PL082X-120-10M6 AC-HA000773	-	-	-	-	-	-	-	
	Y	D6	PL082Y-120-10D6 AC-HA000772	M6	PL082Y-120-10M6 AC-HA000774	-	-	-	-	-	-	-	
300A	X	D6	PL082X-300-10D6 AC-HA001210	M6	PL082X-300-10M6 AC-HA001212	M6	PL082X-300-20M6 AC-HA002527	35	PL082X-300-30D35 AC-HA001566	M6	PL082Y-300-20M6 AC-HA002528	35	PL082Y-300-30D35 AC-HA001567
	Y	D6	PL082Y-300-10D6 AC-HA001211	M6	PL082Y-300-10M6 AC-HA001213	M6	PL082X-300-20M6 AC-HA000947	50	PL082X-300-30D50 AC-HA001568	M6	PL082Y-300-20M6 AC-HA000811	50	PL082Y-300-30D50 AC-HA001569
	X	D8	PL082X-300-10D8 AC-HA000811	M8	PL082X-300-10M8 AC-HA000814	M8	PL082X-300-20M8 AC-HA000948	50	PL082X-300-30D50 AC-HA001568	M8	PL082Y-300-10M8 AC-HA000814	50	PL082Y-300-30D50 AC-HA001569
	Y	D8	PL082Y-300-10D8 AC-HA000812	M8	PL082Y-300-10M8 AC-HA000814	M8	PL082X-300-20M8 AC-HA000948	50	PL082X-300-30D50 AC-HA001568	M8	PL082Y-300-10M8 AC-HA000814	50	PL082Y-300-30D50 AC-HA001569
	X	D10	PL082X-300-10D10 AC-HA000807	M10	PL082X-300-10M10 AC-HA000809	M10	PL082X-300-20M10 AC-HA002529	70	PL082X-300-30D70 AC-HA001570	M10	PL082Y-300-10M10 AC-HA000808	70	PL082Y-300-30D70 AC-HA001571
	Y	D10	PL082Y-300-10D10 AC-HA000808	M10	PL082Y-300-10M10 AC-HA000810	M10	PL082X-300-20M10 AC-HA002530	70	PL082X-300-30D70 AC-HA001570	M10	PL082Y-300-10M10 AC-HA000810	70	PL082Y-300-30D70 AC-HA001571

With HVIL

Series Key	Busbar Lug+(D+Stud Size)			Busbar Lug+(M+Stud Size)			Thread Pin+(M+Thread Size)			Tubular Lug+(D+Cable Size)			
	Termination	Description	Part Number	Termination	Description	Part Number	Termination	Description	Part Number	Termination	Description	Part Number	
120A	X	D6	PL082X-121-10D6 AC-HA000767	M6	PL082X-121-10M6 AC-HA000769	-	-	-	-	-	-	-	
	Y	D6	PL082Y-121-10D6 AC-HA000768	M6	PL082Y-121-10M6 AC-HA000770	-	-	-	-	-	-	-	
300A	X	D6	PL082X-301-10D6 AC-HA001206	M6	PL082X-301-10M6 AC-HA001208	M6	PL082X-301-20M6 AC-HA002523	35	PL082X-301-30D35 AC-HA001560	M6	PL082Y-301-10M6 AC-HA001209	35	PL082Y-301-30D35 AC-HA001561
	Y	D6	PL082Y-301-10D6 AC-HA001207	M6	PL082Y-301-10M6 AC-HA001209	M6	PL082X-301-20M6 AC-HA002524	35	PL082X-301-30D35 AC-HA001561	M6	PL082Y-301-10M6 AC-HA001209	35	PL082Y-301-30D35 AC-HA001562
	X	D8	PL082X-301-10D8 AC-HA000803	M8	PL082X-301-10M8 AC-HA000805	M8	PL082X-301-20M8 AC-HA001507	50	PL082X-301-30D50 AC-HA001562	M8	PL082Y-301-10M8 AC-HA000806	50	PL082Y-301-30D50 AC-HA001563
	Y	D8	PL082Y-301-10D8 AC-HA000804	M8	PL082Y-301-10M8 AC-HA000806	M8	PL082X-301-20M8 AC-HA001508	50	PL082X-301-30D50 AC-HA001563	M8	PL082Y-301-10M8 AC-HA000806	50	PL082Y-301-30D50 AC-HA001564
	X	D10	PL082X-301-10D10 AC-HA000799	M10	PL082X-301-10M10 AC-HA000801	M10	PL082X-301-20M10 AC-HA002525	70	PL082X-301-30D70 AC-HA001564	M10	PL082Y-301-10M10 AC-HA000801	70	PL082Y-301-30D70 AC-HA001565
	Y	D10	PL082Y-301-10D10 AC-HA000800	M10	PL082Y-301-10M10 AC-HA000802	M10	PL082X-301-20M10 AC-HA002526	70	PL082X-301-30D70 AC-HA001564	M10	PL082Y-301-10M10 AC-HA000802	70	PL082Y-301-30D70 AC-HA001565

Ordering Information-PowerLok™ 3POS Receptacle

PL 08 3X - 300 - 10 M10

Product Type	Connector Type	Key (Touch Proof Cover Color)	Current & HVIL	Termination Type	Termination Size
PowerLok™	08 3POS Receptacle	3X Orange	300 300A W/O HVIL	10 Busbar Lug	D+Stud Size
			301 300A With HVIL		M+Stud Size
		3Y Black	300 300A W/O HVIL	20 Thread Pin	M+Thread Size
			301 300A With HVIL		30 Tubular Lug

W/O HVIL

Series Key	Busbar Lug+(D+Stud Size)			Busbar Lug+(M+Stud Size)			Thread Pin+(M+Thread Size)			Tubular Lug+(D+Cable Size)			
	Termination	Description	Part Number	Termination	Description	Part Number	Termination	Description	Part Number	Termination	Description	Part Number	
300A	X	D6	PL083X-300-10D6 AC-HA001152	M6	PL083X-300-10M6 AC-HA001154	M6	PL083X-300-20M6 AC-HA002451	35	PL083X-300-30D35 AC-HA001578	M6	PL083Y-300-10M6 AC-HA001155	35	PL083Y-300-30D35 AC-HA001579
	Y	D6	PL083Y-300-10D6 AC-HA001153	M6	PL083Y-300-10M6 AC-HA001155	M6	PL083X-300-20M6 AC-HA002452	35	PL083X-300-30D35 AC-HA001579	M6	PL083Y-300-10M6 AC-HA001155	35	PL083Y-300-30D35 AC-HA001580
	X	D8	PL083X-300-10D8 AC-HA001148	M8	PL083X-300-10M8 AC-HA001150	M8	PL083X-300-20M8 AC-HA001513	50	PL083X-300-30D50 AC-HA001580	M8	PL083Y-300-10M8 AC-HA001149	50	PL083Y-300-30D50 AC-HA001581
	Y	D8	PL083Y-300-10D8 AC-HA001149	M8	PL083Y-300-10M8 AC-HA001151	M8	PL083X-300-20M8 AC-HA001514	50	PL083X-300-30D50 AC-HA001581	M8	PL083Y-300-10M8 AC-HA001149	50	PL083Y-300-30D50 AC-HA001582
	X	D10	PL083X-300-10D10 AC-HA001144	M10	PL083X-300-10M10 AC-HA001146	M10	PL083X-300-20M10 AC-HA002533	70	PL083X-300-30D70 AC-HA001581	M10	PL083Y-300-10M10 AC-HA001144	70	PL083Y-300-30D70 AC-HA001583
	Y	D10	PL083Y-300-10D10 AC-HA001145	M10	PL083Y-300-10M10 AC-HA001147	M10	PL083X-300-20M10 AC-HA002534	70	PL083X-300-30D70 AC-HA001581	M10	PL083Y-300-10M10 AC-HA001145	70	PL083Y-300-30D70 AC-HA001583

With HVIL

Series Key	Busbar Lug+(D+Stud Size)			Busbar Lug+(M+Stud Size)			Thread Pin+(M+Thread Size)			Tubular Lug+(D+Cable Size)			
	Termination	Description	Part Number	Termination	Description	Part Number	Termination	Description	Part Number	Termination	Description	Part Number	
300A	X	D6	PL083X-301-10D6 AC-HA001140	M6	PL083X-301-10M6 AC-HA001142	M6	PL083X-300-20M6 AC-HA002449	35	PL083X-300-30D35 AC-HA001572	M6	PL083Y-301-10M6 AC-HA001143	35	PL083Y-300-30D35 AC-HA001573
	Y	D6	PL083Y-301-10D6 AC-HA001141	M6	PL083Y-301-10M6 AC-HA001143	M6	PL083X-300-20M6 AC-HA002450	35	PL083X-300-30D35 AC-HA001573	M6	PL083Y-301-10M6 AC-HA001143	35	PL083Y-300-30D35 AC-HA001574
	X	D8	PL083X-301-10D8 AC-HA001136	M8	PL083X-301-10M8 AC-HA001138	M8	PL083X-300-20M8 AC-HA001511	50	PL083X-300-30D50 AC-HA001574	M8	PL083Y-301-10M8 AC-HA001137	50	PL083Y-300-30D50 AC-HA001575
	Y	D8	PL083Y-301-10D8 AC-HA001137	M8	PL083Y-301-10M8 AC-HA001139	M8	PL083X-300-20M8 AC-HA001512	50	PL083X-300-30D50 AC-HA001575	M8	PL083Y-301-10M8 AC-HA001137	50	PL083Y-300-30D50 AC-HA001576
	X	D10	PL083X-301-10D10 AC-HA001132	M10	PL083X-301-10M10 AC-HA001134	M10	PL083X-300-20M10 AC-HA002531	70	PL083X-300-30D70 AC-HA001576	M10	PL083Y-301-10M10 AC-HA001132	70	PL083Y-300-30D70 AC-HA001577
	Y	D10	PL083Y-301-10D10 AC-HA001133	M10	PL083Y-301-10M10 AC-HA001135	M10	PL083X-300-20M10 AC-HA002532	70	PL083X-300-30D70 AC-HA001576	M10	PL083Y-301-10M10 AC-HA001133	70	PL083Y-300-30D70 AC-HA001577

(1) D=Through hole
(2) M=Screw hole

Ordering Information-PowerLok™ 1POS Assembled Plug W/O HVIL

PL 18 X - 300 - 70

Product Type	Connector Type	Key (Touch Proof Cover Color)	Current & HVIL	Accepted Cable Size(mm²)	Current Rating (A)
PowerLok™	18 Plug Connector, Straight, Shield	X Orange	200 200A W/O HVIL	25	120
		Y Black		35	150
		U Yellow		50	200
		V Green		70	250
	28 Plug Connector, Right Angle, Shield	W Red	300 300A W/O HVIL	35	150
		X Yellow		50	200
		U Yellow		70	250
		V Green		95	300
	48 Plug Connector, Straight, Un-shield	W Red	500 500A W/O HVIL	120	400
		X Yellow		150	500
		U Yellow			
		V Green			

W/O HVIL

Series	Key	18: Plug Connector, Straight, Shield		28: Plug Connector, Right Angle, Shield		48: Plug Connector, Straight, Un-Shield		58: Plug Connector, Right Angle, Un-Shield		
		Description	Part Number	Description	Part Number	Description	Part Number	Description	Part Number	
25	X	PL18X-200-25	PL18X-200-25	PL28X-200-25	PL28X-200-25	PL48X-200-25	PL48X-200-25	PL58X-200-25	PL58X-200-25	
	Y	PL18Y-200-25	PL18Y-200-25	PL28Y-200-25	PL28Y-200-25	PL48Y-200-25	PL48Y-200-25	PL58Y-200-25	PL58Y-200-25	
	U	PL18U-200-25	PL18U-200-25	PL28U-200-25	PL28U-200-25	PL48U-200-25	PL48U-200-25	PL58U-200-25	PL58U-200-25	
	V	PL18V-200-25	PL18V-200-25	PL28V-200-25	PL28V-200-25	PL48V-200-25	PL48V-200-25	PL58V-200-25	PL58V-200-25	
	W	PL18W-200-25	PL18W-200-25	PL28W-200-25	PL28W-200-25	PL48W-200-25	PL48W-200-25	PL58W-200-25	PL58W-200-25	
	200A	X	PL18X-200-35	PL18X-200-35	PL28X-200-35	PL28X-200-35	PL48X-200-35	PL48X-200-35	PL58X-200-35	PL58X-200-35
		Y	PL18Y-200-35	PL18Y-200-35	PL28Y-200-35	PL28Y-200-35	PL48Y-200-35	PL48Y-200-35	PL58Y-200-35	PL58Y-200-35
		U	PL18U-200-35	PL18U-200-35	PL28U-200-35	PL28U-200-35	PL48U-200-35	PL48U-200-35	PL58U-200-35	PL58U-200-35
		V	PL18V-200-35	PL18V-200-35	PL28V-200-35	PL28V-200-35	PL48V-200-35	PL48V-200-35	PL58V-200-35	PL58V-200-35
		W	PL18W-200-35	PL18W-200-35	PL28W-200-35	PL28W-200-35	PL48W-200-35	PL48W-200-35	PL58W-200-35	PL58W-200-35
		X	PL18X-200-50	PL18X-200-50	PL28X-200-50	PL28X-200-50	PL48X-200-50	PL48X-200-50	PL58X-200-50	PL58X-200-50
	300A	X	PL18X-300-35	PL18X-300-35	PL28X-300-35	PL28X-300-35	PL48X-300-35	PL48X-300-35	PL58X-300-35	PL58X-300-35
Y		PL18Y-300-35	PL18Y-300-35	PL28Y-300-35	PL28Y-300-35	PL48Y-300-35	PL48Y-300-35	PL58Y-300-35	PL58Y-300-35	
U		PL18U-300-35	PL18U-300-35	PL28U-300-35	PL28U-300-35	PL48U-300-35	PL48U-300-35	PL58U-300-35	PL58U-300-35	
V		PL18V-300-35	PL18V-300-35	PL28V-300-35	PL28V-300-35	PL48V-300-35	PL48V-300-35	PL58V-300-35	PL58V-300-35	
W		PL18W-300-35	PL18W-300-35	PL28W-300-35	PL28W-300-35	PL48W-300-35	PL48W-300-35	PL58W-300-35	PL58W-300-35	
T		PL18T-300-35	PL18T-300-35	PL28T-300-35	PL28T-300-35	PL48T-300-35	PL48T-300-35	PL58T-300-35	PL58T-300-35	
X		PL18X-300-50	PL18X-300-50	PL28X-300-50	PL28X-300-50	PL48X-300-50	PL48X-300-50	PL58X-300-50	PL58X-300-50	
Y		PL18Y-300-50	PL18Y-300-50	PL28Y-300-50	PL28Y-300-50	PL48Y-300-50	PL48Y-300-50	PL58Y-300-50	PL58Y-300-50	
U		PL18U-300-50	PL18U-300-50	PL28U-300-50	PL28U-300-50	PL48U-300-50	PL48U-300-50	PL58U-300-50	PL58U-300-50	
V		PL18V-300-50	PL18V-300-50	PL28V-300-50	PL28V-300-50	PL48V-300-50				

Ordering Information-PowerLok™ 1POS Assembled Plug With HVIL

PL 18 X - 301 - 70

Product Type	Connector Type	Key (Touch Proof Cover Color)	Current & HVIL	Accepted Cable Size(mm ²)	Current Rating (A)
PowerLok™	18 Plug Connector, Straight, Shield	X Orange	201 200A W/O HVIL	25 35	120 150
		Y Black		50	200
	28 Plug Connector, Right Angle, Shield	U Yellow	301 300A W/O HVIL	35 50	150 200
		V Green		70	250
	48 Plug Connector, Straight, Un-shield	W Red	501 500A W/O HVIL	70 95	250 300
		T Blue		120 150	400 500

Series	Key	With HVIL							
		18: Plug Connector, Straight, Shield		28: Plug Connector, Right Angle, Shield		48: Plug Connector, Straight, Un-Shield		58: Plug Connector, Right Angle, Un-Shield	
		Description	Part Number	Description	Part Number	Description	Part Number	Description	Part Number
200A	25	X PL18X-201-25	AC-HA004290	PL28X-201-25	AC-HA004305	PL48X-201-25	PL48X-201-25	PL58X-201-25	PL58X-201-25
		Y PL18Y-201-25	AC-HA004291	PL28Y-201-25	AC-HA004306	PL48Y-201-25	PL48Y-201-25	PL58Y-201-25	PL58Y-201-25
		U PL18U-201-25	AC-HA004292	PL28U-201-25	AC-HA004307	PL48U-201-25	PL48U-201-25	PL58U-201-25	PL58U-201-25
		V PL18V-201-25	AC-HA004293	PL28V-201-25	AC-HA004308	PL48V-201-25	PL48V-201-25	PL58V-201-25	PL58V-201-25
	35	W PL18W-201-25	AC-HA004294	PL28W-201-25	AC-HA004309	PL48W-201-25	PL48W-201-25	PL58W-201-25	PL58W-201-25
		X PL18X-201-35	AC-HA004295	PL28X-201-35	AC-HA004310	PL48X-201-35	PL48X-201-35	PL58X-201-35	PL58X-201-35
		Y PL18Y-201-35	AC-HA004296	PL28Y-201-35	AC-HA004311	PL48Y-201-35	PL48Y-201-35	PL58Y-201-35	PL58Y-201-35
		U PL18U-201-35	AC-HA004297	PL28U-201-35	AC-HA004312	PL48U-201-35	PL48U-201-35	PL58U-201-35	PL58U-201-35
	50	V PL18V-201-35	AC-HA004298	PL28V-201-35	AC-HA004313	PL48V-201-35	PL48V-201-35	PL58V-201-35	PL58V-201-35
		W PL18W-201-35	AC-HA004299	PL28W-201-35	AC-HA004314	PL48W-201-35	PL48W-201-35	PL58W-201-35	PL58W-201-35
		X PL18X-201-50	AC-HA004300	PL28X-201-50	AC-HA004315	PL48X-201-50	PL48X-201-50	PL58X-201-50	PL58X-201-50
		Y PL18Y-201-50	AC-HA004301	PL28Y-201-50	AC-HA004316	PL48Y-201-50	PL48Y-201-50	PL58Y-201-50	PL58Y-201-50
300A	35	U PL18U-201-50	AC-HA004302	PL28U-201-50	AC-HA004317	PL48U-201-50	PL48U-201-50	PL58U-201-50	PL58U-201-50
		V PL18V-201-50	AC-HA004303	PL28V-201-50	AC-HA004318	PL48V-201-50	PL48V-201-50	PL58V-201-50	PL58V-201-50
		W PL18W-201-50	AC-HA004304	PL28W-201-50	AC-HA004319	PL48W-201-50	PL48W-201-50	PL58W-201-50	PL58W-201-50
		X PL18X-301-35	AC-HA000815	PL28X-301-35	AC-HA000845	PL48X-301-35	AC-HA002603	PL58X-301-35	AC-HA004440
	50	Y PL18Y-301-35	AC-HA000816	PL28Y-301-35	AC-HA000846	PL48Y-301-35	AC-HA002604	PL58Y-301-35	AC-HA004441
		U PL18U-301-35	AC-HA000817	PL28U-301-35	AC-HA000847	PL48U-301-35	AC-HA002605	PL58U-301-35	AC-HA004442
		V PL18V-301-35	AC-HA000818	PL28V-301-35	AC-HA000848	PL48V-301-35	AC-HA002606	PL58V-301-35	AC-HA004443
		W PL18W-301-35	AC-HA000819	PL28W-301-35	AC-HA000849	PL48W-301-35	AC-HA002607	PL58W-301-35	AC-HA004444
	70	T PL18T-301-35	AC-HA001283	PL28T-301-35	AC-HA001289	PL48T-301-35	AC-HA008504	PL58T-301-35	AC-HA008510
		X PL18X-301-50	AC-HA000820	PL28X-301-50	AC-HA000850	PL48X-301-50	AC-HA002613	PL58X-301-50	AC-HA004445
		Y PL18Y-301-50	AC-HA000821	PL28Y-301-50	AC-HA000851	PL48Y-301-50	AC-HA002614	PL58Y-301-50	AC-HA004446
		U PL18U-301-50	AC-HA000822	PL28U-301-50	AC-HA000852	PL48U-301-50	AC-HA002615	PL58U-301-50	AC-HA004447
500A	70	V PL18V-301-50	AC-HA000823	PL28V-301-50	AC-HA000853	PL48V-301-50	AC-HA002616	PL58V-301-50	AC-HA004448
		W PL18W-301-50	AC-HA000824	PL28W-301-50	AC-HA000854	PL48W-301-50	AC-HA002617	PL58W-301-50	AC-HA004449
		T PL18T-301-50	AC-HA001284	PL28T-301-50	AC-HA001290	PL48T-301-50	AC-HA008505	PL58T-301-50	AC-HA008511
		X PL18X-301-70	AC-HA000825	PL28X-301-70	AC-HA000855	PL48X-301-70	AC-HA002623	PL58X-301-70	AC-HA004450
	95	Y PL18Y-301-70	AC-HA000826	PL28Y-301-70	AC-HA000856	PL48Y-301-70	AC-HA002624	PL58Y-301-70	AC-HA004451
		U PL18U-301-70	AC-HA000827	PL28U-301-70	AC-HA000857	PL48U-301-70	AC-HA002625	PL58U-301-70	AC-HA004452
		V PL18V-301-70	AC-HA000828	PL28V-301-70	AC-HA000858	PL48V-301-70	AC-HA002626	PL58V-301-70	AC-HA004453
		W PL18W-301-70	AC-HA000829	PL28W-301-70	AC-HA000859	PL48W-301-70	AC-HA002627	PL58W-301-70	AC-HA004454
	120	T PL18T-301-70	AC-HA001285	PL28T-301-70	AC-HA001291	PL48T-301-70	AC-HA008506	PL58T-301-70	AC-HA008512
		X PL18X-501-70-5	AC-HA006467	PL28X-501-70-5	AC-HA006638	-	-	-	-
		Y PL18Y-501-70-5	AC-HA006468	PL28Y-501-70-5	AC-HA006639	-	-	-	-
		U PL18U-501-70-5	AC-HA006469	PL28U-501-70-5	AC-HA006640	-	-	-	-
150	V PL18V-501-70-5	AC-HA006470	PL28V-501-70-5	AC-HA006641	-	-	-	-	
	W PL18W-501-70-5	AC-HA006471	PL28W-501-70-5	AC-HA006642	-	-	-	-	
	X PL18X-501-95-5	AC-HA006462	PL28X-501-95-5	AC-HA006633	-	-	-	-	
	Y PL18Y-501-95-5	AC-HA006463	PL28Y-501-95-5	AC-HA006634	-	-	-	-	
150	U PL18U-501-95-5	AC-HA006464	PL28U-501-95-5	AC-HA006635	-	-	-	-	
	V PL18V-501-95-5	AC-HA006465	PL28V-501-95-5	AC-HA006636	-	-	-	-	
	W PL18W-501-95-5	AC-HA006466	PL28W-501-95-5	AC-HA006637	-	-	-	-	
	X PL18X-501-120-5	AC-HA006457	PL28X-501-120-5	AC-HA006628	-	-	-	-	
150	Y PL18Y-501-120-5	AC-HA006458	PL28Y-501-120-5	AC-HA006629	-	-	-	-	
	U PL18U-501-120-5	AC-HA006459	PL28U-501-120-5	AC-HA006630	-	-	-	-	
	V PL18V-501-120-5	AC-HA006460	PL28V-501-120-5	AC-HA006631	-	-	-	-	
	W PL18W-501-120-5	AC-HA006461	PL28W-501-120-5	AC-HA006632	-	-	-	-	
150	X PL18X-501-150-5	AC-HA006452	PL28X-501-150-5	AC-HA006623	-	-	-	-	
	Y PL18Y-501-150-5	AC-HA006453	PL28Y-501-150-5	AC-HA006624	-	-	-	-	
	U PL18U-501-150-5	AC-HA006454	PL28U-501-150-5	AC-HA006625	-	-	-	-	
	V PL18V-501-150-5	AC-HA006455	PL28V-501-150-5	AC-HA006626	-	-	-	-	
W PL18W-501-150-5	AC-HA006456	PL28W-501-150-5	AC-HA006627	-	-	-	-		

Note: 1POS-500A Assembled Plug Cable type "5"="HS Cable"

Ordering Information-PowerLok™ 2POS Assembled Plug

PL 48 2X - 300 - 70

Product Type	Connector Type	Key (Touch Proof Cover Color)	Current & HVIL	Accepted Cable Size(mm ²)	Current Rating (A)
PowerLok™	18 Plug Connector, Straight, Shield	2X Orange	300 300A W/O HVIL	35	150
	28 Plug Connector, Right Angle, Shield		50	200	
	48 Plug Connector, Straight, Un-Shield	2Y Black	301 300A With HVIL	70	250
	58 Plug Connector, Right Angle, Un-Shield		35	150	
			50	200	

Series	Key	18: Plug Connector, Straight, Shield		28: Plug Connector, Right Angle, Shield		48: Plug Connector, Straight, Un-Shield		58: Plug Connector, Right Angle, Un-Shield	
		Description	Part Number	Description	Part Number	Description	Part Number	Description	Part Number
W/O HVIL									
300A	35	2X PL182X-300-35	AC-HA000787	PL282X-300-35	AC-HA000793	PL482X-300-35	AC-HA002635	PL582X-300-35	AC-HA004490
		2Y PL182Y-300-35	AC-HA000788	PL282Y-300-35	AC-HA000794	PL482Y-300-35	AC-HA002636	PL582Y-300-35	AC-HA004491
	50	2X PL182X-300-50	AC-HA000789	PL282X-300-50	AC-HA000795	PL482X-300-50	AC-HA002639	PL582X-300-50	AC-HA004492
		2Y PL182Y-300-50	AC-HA000790	PL282Y-300-50	AC-HA000796	PL482Y-300-50	AC-HA002640	PL582Y-300-50	AC-HA004493
70	2X PL182X-300-70	AC-HA000791	PL282X-300-70	AC-HA000797	PL482X-300-70	AC-HA002643	PL582X-300-70	AC-HA004494	
	2Y PL182Y-300-70	AC-HA000792	PL282Y-300-70	AC-HA000798	PL482Y-300-70	AC-HA002644	PL582Y-300-70	AC-HA004495	
With HVIL									
300A	35	2X PL182X-301-35	AC-HA000775	PL282X-301-35	AC-HA000781	PL482X-301-35	AC-HA002446	PL582X-301-35	AC-HA002448
		2Y PL182Y-301-35	AC-HA000776	PL282Y-301-35	AC-HA000782	PL482Y-301-35	AC-HA002634	PL582Y-301-35	AC-HA004485
	50	2X PL182X-301-50	AC-HA000777	PL282X-301-50	AC-HA000783	PL482X-301-50	AC-HA002637	PL582X-301-50	AC-HA004486
		2Y PL182Y-301-50	AC-HA000778	PL282Y-301-50	AC-HA000784	PL482Y-301-50	AC-HA002638	PL582Y-301-50	AC-HA004487
70	2X PL182X-301-70	AC-HA000779	PL282X-301-70	AC-HA000785	PL482X-301-70	AC-HA002641	PL582X-301-70	AC-HA004488	
	2Y PL182Y-301-70	AC-HA000780	PL282Y-301-70	AC-HA000786	PL482Y-301-70	AC-HA002642	PL582Y-301-70	AC-HA004489	

Ordering Information-PowerLok™ 3POS Assembled Plug

PL 28 3X - 301 - 70

Product Type	Connector Type	Key (Touch Proof Cover Color)	Current & HVIL	Accepted Cable Size(mm ²)	Current Rating (A)
PowerLok™	18 Plug Connector, Straight, Shield	3X Orange	300 300A W/O HVIL	35	150
	28 Plug Connector, Right Angle, Shield		50	200	
	48 Plug Connector, Straight, Un-Shield	3Y Black	301 300A With HVIL	70	250
	58 Plug Connector, Right Angle, Un-Shield		35	150	
			50	200	

Series	Key	18: Plug Connector, Straight, Shield		28: Plug Connector, Right Angle, Shield		48: Plug Connector, Straight, Un-Shield		58: Plug Connector, Right Angle, Un-Shield	
		Description	Part Number	Description	Part Number	Description	Part Number	Description	Part Number
W/O HVIL									
300A	35	3X PL183X-300-35	AC-HA001114	PL283X-300-35	AC-HA001126	PL483X-300-35	-	PL583X-300-35	-
		3Y PL183Y-300-35	AC-HA001115	PL283Y-300-35	AC-HA001127	PL483Y-300-35	-	PL583Y-300-35	-
	50	3X PL183X-300-50	AC-HA001116	PL283X-300-50	AC-HA001128	PL483X-300-50	-	PL583X-300-50	-
		3Y PL183Y-300-50	AC-HA001117	PL283Y-300-50	AC-HA001129	PL483Y-300-50	-	PL583Y-300-50	-
70	3X PL183X-300-70	AC-HA001118	PL283X-300-70	AC-HA001130	PL483X-300-70	-	PL583X-300-70	-	
	3Y PL183Y-300-70	AC-HA001119	PL283Y-300-70	AC-HA001131	PL483Y-300-70	-	PL583Y-300-70	-	
With HVIL									
300A	35	3X PL183X-301-35	AC-HA001108	PL283X-301-35	AC-HA001120	PL483X-301-35	-	PL583X-301-35	-
		3Y PL183Y-301-35	AC-HA001109	PL283Y-301-35	AC-HA001121	PL483Y-301-35	-	PL583Y-301-35	-
	50	3X PL183X-301-50	AC-HA001110	PL283X-301-50	AC-HA001122	PL483X-301-50	-	PL583X-301-50	-
		3Y PL183Y-301-50	AC-HA001111	PL283Y-301-50	AC-HA001123	PL483Y-301-50	-	PL583Y-301-50	-
70									

Ordering Information-PowerLok™ 1POS Overmolded Plug

Product Type	Connector Type	Key (Touch Proof Cover Color)		Current & HVIL		Accepted Cable Size(mm ²)	Current Rating (A)
		Key	Color	Current	HVIL		
PowerLok™	10 1POS Plug Straight	X	Orange	120	120A W/O HVIL	16	90
		Y	Black	121	120A With HVIL	25	120
		U	Yellow	300	300A W/O HVIL	35 50	150 200
	20 1POS Plug Right Angle	V	Green	301	300A With HVIL	70 95	250 300
		W	Red	500	500A W/O HVIL	95 120	300 400
		T	Blue	501	500A With HVIL	135	450
						150	500

Ordering Information-PowerLok™ 2POS Overmolded Plug

Product Type	Connector Type	Key (Touch Proof Cover Color)		Current & HVIL		Accepted Cable Size(mm ²)	Current Rating (A)
		Key	Color	Current	HVIL		
PowerLok™	10 2POS Plug Straight	2X	Orange	120	120A W/O HVIL	16	90
	20 2POS Plug Right Angle	2Y	Black	121	120A With HVIL	25	120

⚠ The information contained in this data sheet is for reference only

Amphenol Technical Products International provides the above product specifications for the standard. Specifications are subject to change without notice. Contact your nearest Amphenol Corporation Sales Office for the latest specifications. All statements, information and data given herein are believed to be accurate and reliable but are presented without representation or warranty that any such use is free of patent infringement and are not recommendations to infringe any patent. Specifications are typical and may not apply to all connectors. Note that these specifications are derived from relevant global standards used in the automotive and industrial transportation markets, but they are not a substitute for system level design validation testing, which is the sole responsibility of the system designer and/or end user.