

Size	$\varnothing A_{-0,13}^0$	$B_{-0,23}^0$	C	$\varnothing_{-0,18}^0$ outer	D class 2A	E	$F_{-0,10}^{+0,13}$	$H_{-0,25}^{+0,23}$	$J_{\pm 0,4}$	$\varnothing K_{\pm 0,25}$	$L_{-0,3}^0$
09	17,45	16,64	M17x1 -6g	17	,6250-0, IP-0, 3L	M12x1-6g	22,12	27,00	22,26	30,21	1,5
11	20,63	19,18	M20x1 -6g	20	,7500-0, IP-0, 3L	M15x1-6g	22,12	31,78	25,43	34,96	1,5
13	25,35	23,93	M25x1 -6g	25	,8750-0, IP-0, 3L	M18x1-6g	22,30	34,96	30,21	38,13	1,5
15	28,55	27,08	M28x1 -6g	28	1,0000-0, IP-0, 3L	M22x1-6g	22,30	38,13	33,35	41,31	1,5
17	31,92	30,25	M32x1 -6g	$31,92_{-0,12}^0$	1,1875-0, IP-0, 3L	M25x1-6g	22,30	41,31	36,55	44,48	1,5
19	35,00	33,43	M35x1 -6g	35	1,2500-0, IP-0, 3L	M28x1-6g	22,30	46,05	39,70	49,26	1,5
21	38,00	36,61	M38x1 -6g	38	1,3750-0, IP-0, 3L	M31x1-6g	22,30	49,26	42,91	52,40	1,5
23	41,23	39,78	M41x1 -6g	41	1,5000-0, IP-0, 3L	M34x1-6g	22,30	52,40	46,05	55,61	1,5
25	44,43	42,96	M44x1 -6g	44	1,6250-0, IP-0, 3L	M37x1-6g	22,30	55,61	50,83	58,75	1,5

TV07 R W 17-8 P

Arrangement 17-8 represented

Omit for connector delivered with contacts
LC : Connector delivered without contacts

Polarization N : No letter
or A,B,C,D and E

Contact type : P : Pin, S : Socket

Contacts arrangement : See catalog
"Tri-Start TV-CTV"

Plating

W: Olive drab cadmium 175°C
F: Nickel plating 200°C
K: Passivated Stainless Steel 200°C
S: Nickel plated Stainless Steel 200°C
B: Marine Bronze 200°C
Z: Green zinc Cobalt plated aluminium 175°C
DT: Durmalon plating (Nickel - PTFE) 175°C
TZ: Black tin zinc plating 175°C
ZN: Black zinc nickel plating 175°C

Blank: Without quadrax contacts
Q: With quadrax contacts

R: Crimp contacts (or connector delivered without contact)
Omit for Durmalon plating and black zinc nickel plating

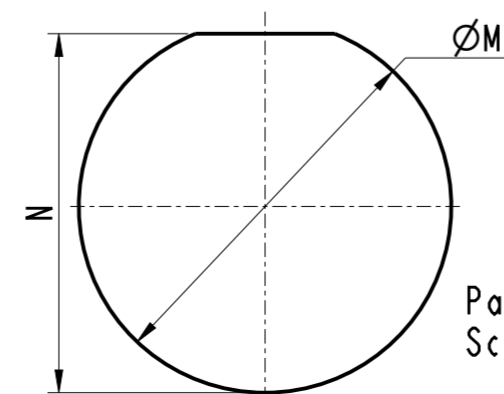
TV07 : Jam nut receptacle 175°C
TVS07* : Jam nut receptacle 200°C

- Jam nut receptacle conform to MIL-DTL-38999 series III.
- Contacts are delivered unassembled.
- If quadrax are used, quadrax key is in the same orientation of master key of connector.

* For quadrax or dif. twinax compatible inserts, please omit the "S" corresponding to 200°C compatibility when applicable, in the part number.

Contact sizes	Contact type	Part numbers	Piggy back grommet
23	Pin	900049	-
	Socket	900048	
22D	Pin	900004	-
	Socket	900044	
20	Pin	900001	-
	Socket	900041	
16	Pin	900000	-
	Socket	900040	
12	Pin	900005	-
	Socket	900045	
12	Pin	076236	-
Coax	Socket	076235	
8	Pin	900130	-
Coax	Socket	900140	
8	Pin	076915	900472
Twinax	Socket	076588	
8	Pin	900330	-
Quadrax	Socket	900338	

Size	Identification letter	AR°	BR°	CR°	DR°
9	Nothing for N	105°	140°	215°	265°
	A	102°	132°	248°	320°
	B	80°	118°	230°	312°
	C	35°	140°	205°	275°
	D	64°	155°	234°	304°
	E	91°	131°	197°	240°
11 - 15	Nothing for N	95°	141°	208°	236°
	A	113°	156°	182°	292°
	B	90°	145°	195°	252°
	C	53°	156°	220°	255°
	D	119°	146°	176°	298°
	E	51°	141°	184°	242°
17 - 25	Nothing for N	80°	142°	196°	293°
	A	135°	170°	200°	310°
	B	49°	169°	200°	244°
	C	66°	140°	200°	257°
	D	62°	145°	180°	280°
	E	79°	153°	197°	272°



Panel drilling
Scale 1,4

DRAWN BY: JP GIMENES	UPDATED BY: K Garud	LAST APPROVED BY: S Holenavar
ALL DIMENSIONS ARE IN MM	AMPHENOL SOCAPEX	
SCALE: 3:0	B.P. 29 74311 THYEZ CEDEX	ORIGINAL DRAWING DATE: 15/11/00
REV: D	PAGE: 1/1	CONFIGURATION DATA ARE AVAILABLE IN PDM
173-PLC-130-00		

IN THE CONSTANT PURPOSE OF IMPROVING ITS PRODUCTS, Amphenol Socapex RESERVES THE RIGHT TO MODIFY ANY DIMENSION OR CHARACTERISTICS. FM.NPD.0037.THYEZ.PUNE.rev.C