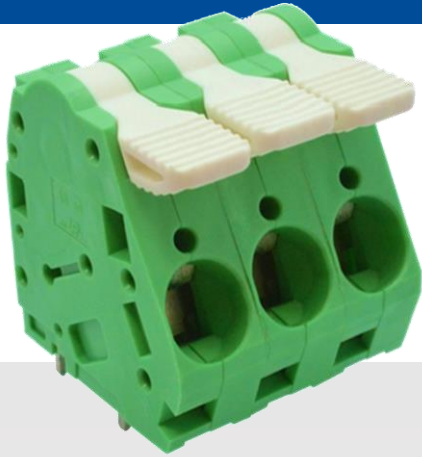


PCB Terminal Blocks

NZ Series



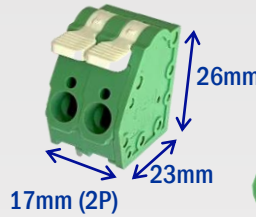
Check out our **Lever Revolution**

All for Power Supply

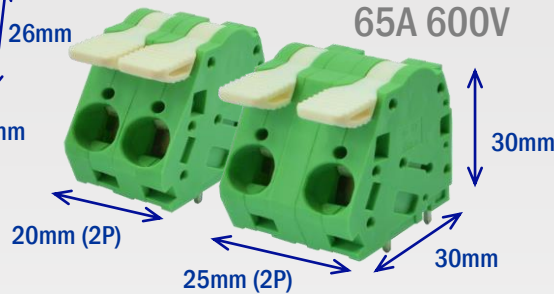
Safe & Easy



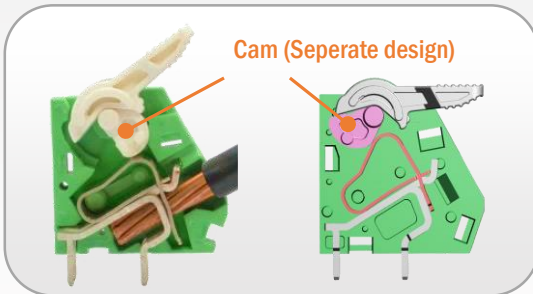
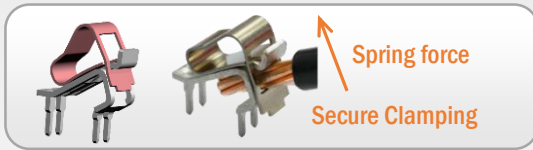
7,5mm pitch
30A 600V



10mm pitch
55A 300V



15mm pitch
65A 600V



Easy wiring in field

- ✓ No tools required for wiring
- ✓ No sudden & unexpected return of lever by the spring force



Pitch	7,5mm	10mm	15mm
Poles	2 - 12P	1 - 12P	2 - 8P
Rated	30A / 600V	55A/300V	65A/600V
Wire	10 - 24 AWG 0,75 - 6 mm ² (Flexible) 0,75 - 6 mm ² (Solid & Rigid)	6 - 16 AWG 0,75 - 10 mm ² (Flexible) 0,75 - 16 mm ² (Solid & Rigid)	6 - 16 AWG 0,75 - 10 mm ² (Flexible) 0,75 - 16 mm ² (Solid & Rigid)
Strip Length	11 - 12 mm	12 - 13 mm	12 - 13 mm
Operating temp.	-40 to +115°C		
Available color			

