

# SHIELD-PACK™ AK CLASS 1 AK



Shield-Pack™ AK Class 1

## BENEFITS

- Standard AK interface
- High vibrations and operating temperatures
- Multiple layouts & HVIL options in the same interface

## FEATURES

- Designed according to AK interface specification and LV215 latest revision
- Finger proof/touch safe
- Multicore shielded cable for wiring simplification
- Fully interchangeable with other AK supplier sources



## AVAILABLE CONFIGURATIONS

|                                |                           |
|--------------------------------|---------------------------|
| Connector Type                 | Wire-to-device            |
| Cable Exit Orientation         | 180°                      |
| Cable Range (mm <sup>2</sup> ) | 2.5, 4.0                  |
| Terminal Type (mm)             | 2.8                       |
| Shielding                      | Multicore                 |
| HVIL                           | Shunt on female or inline |
| Number of Indexes              | 5                         |



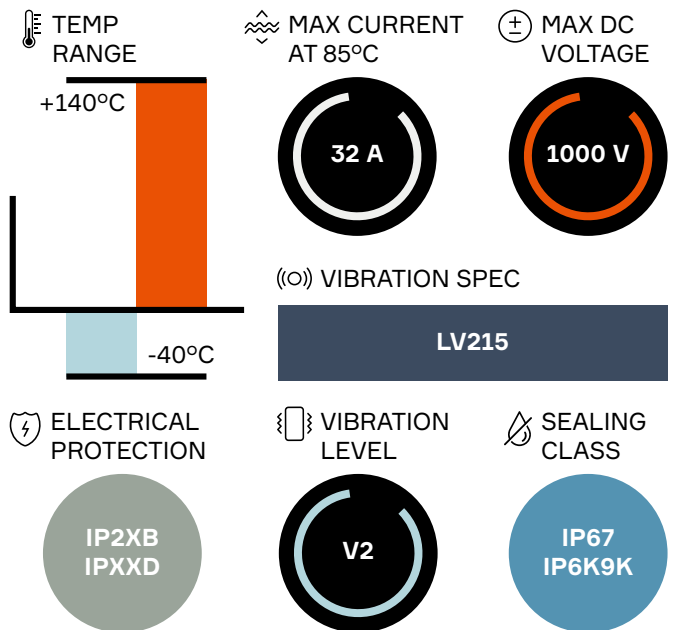
## APPLICATIONS

|                   |
|-------------------|
| Electric AC       |
| PTC Heaters       |
| Inverts           |
| On-board chargers |

See back page for representative part numbers and packaging dimensions.



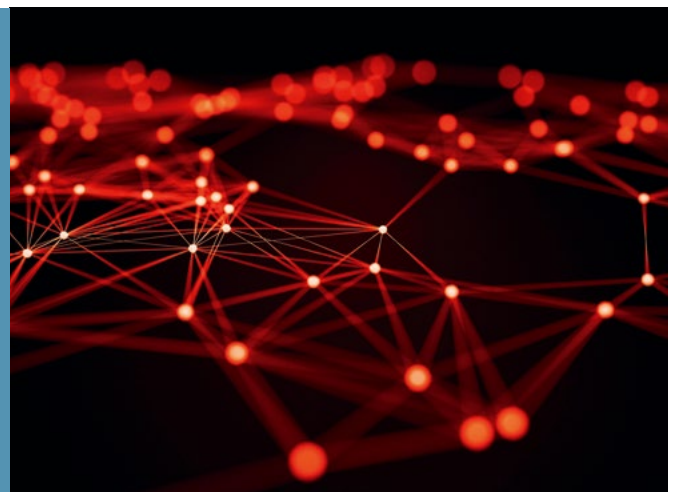
## TECHNICAL CHARACTERISTICS



## About Aptiv

Aptiv is a global technology company that develops safer, greener and more connected solutions enabling the future of mobility. Headquartered in Dublin, Aptiv has approximately 150,000 employees and operates 14 technical centers, as well as manufacturing sites and customer support centers in 45 countries.

Visit [aptiv.com](http://aptiv.com)



| Part number | # of ways | Description                    | Index | Mating Header 2 way | Mating Header 3 way | BOM |
|-------------|-----------|--------------------------------|-------|---------------------|---------------------|-----|
| 33372017    | 2         | Female connector outer housing | A     | 35149836            | 35149842            | 1   |
| 33372014    | 2         | Female connector outer housing | B     | 35149837            | 35149843            |     |
| 33372016    | 2         | Female connector outer housing | C     | 35149838            | 35149844            |     |
| 33372015    | 2         | Female connector outer housing | D     | 35149839            | 35149845            |     |
| 35061103    | 2         | Female connector outer housing | E     | 35149840            | 35149846            |     |

## ASSOCIATED PARTS

| Part number                 | Description   | BOM                      |                   |       |
|-----------------------------|---|--------------------------|-------------------|-------|
|                             |   | 2 way, HVIL pass-through | 2 way, HVIL shunt | 3 way |
| <b>for Female Connector</b> |   |                          |                   |       |
| 35174268                    | Spacer  | 1                        | 1                 | 1     |
| 35174446                    | Shielding   | 2                        | 2                 | 2     |
| 35174249                    | ASM Strain Relief for 3 x 2.5 mm <sup>2</sup>           | -                        | -                 | 1     |
| 35174250                    | Cable Seal for 3 x 2.5 mm <sup>2</sup>                  | -                        | -                 | 1     |
| 35174511                    | Inner Housing, 2Way                                     | 1                        | -                 | -     |
| 35174507                    | ASM Strain Relief for 2 x 4.0 mm <sup>2</sup>           | -                        | 1                 | -     |
| 35174508                    | Cable Seal for 2 x 4.0 mm <sup>2</sup>                  | 1                        | 1                 | -     |
| 35174280                    | Inner ferrule   | 1                        | 1                 | 1     |
| 35174278                    | Outer ferrule   | 1                        | 1                 | 1     |
| 35174509                    | Inner Housing Sub-assembly                              | -                        | 1                 | -     |
| 35174448                    | Inner Housing, 3Way                                     | -                        | -                 | 1     |
| 35174513                    | TPA (Terminal Position Assurance)                       | 1                        | -                 | -     |
| 35174510                    | ASM Strain Relief for 2 x 4.0 + 2 x 0.5 mm <sup>2</sup> | 1                        | -                 | -     |
| 33514302                    | Female terminal DCK 2.8 2.5 mm <sup>2</sup> Ag          | 2                        | 2                 | 3     |
| 33522728                    | Female terminal DCK 2.8 4 mm <sup>2</sup> Ag<br>or*     |                          |                   |       |
| 13799603                    | Female terminal CTS 2.8 2.5 mm <sup>2</sup> Ag          |                          |                   |       |
| 13882331                    | Female terminal CTS 2.8 4 mm <sup>2</sup> Ag            |                          |                   |       |
| <b>for Male Header</b>      |   |                          |                   |       |
| 35194900                    | DCS-2 2.8 male terminal 2.5-4 mm <sup>2</sup> Ag        | 2                        | 2                 | 3     |
| 33504709                    | Male Duo twin 0.64 0.5 mm <sup>2</sup>                  | 2                        | 2                 | -     |

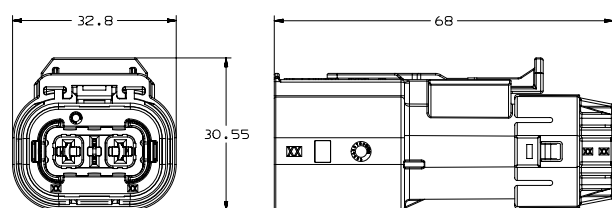
\* Both DCK terminals and CTS terminals are compatible.

### Component Kits\*\*

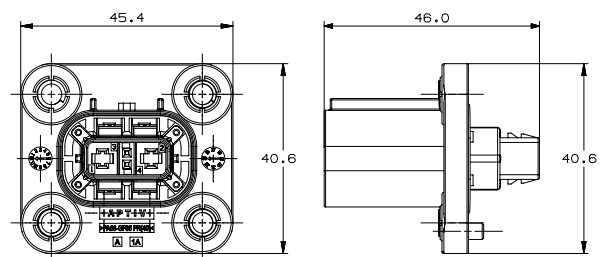
| Part number | Assembly Description (shunted version) | Part number | Assembly Description (pass-through version)                  |
|-------------|--|-------------|--|
| 33367712    | 2 x 4 mm <sup>2</sup> cable code A     | 35122237    | 2 x 4 mm <sup>2</sup> + 2 x 0.5 mm <sup>2</sup> cable code A |
| 35122240    | 2 x 4 mm <sup>2</sup> cable code B     | 35122238    | 2 x 4 mm <sup>2</sup> + 2 x 0.5 mm <sup>2</sup> cable code B |
| 35122241    | 2 x 4 mm <sup>2</sup> cable code C     | 33367711    | 2 x 4 mm <sup>2</sup> + 2 x 0.5 mm <sup>2</sup> cable code C |
| 33367710    | 2 x 4 mm <sup>2</sup> cable code D     | 35122239    | 2 x 4 mm <sup>2</sup> + 2 x 0.5 mm <sup>2</sup> cable code D |
| 35086590    | 2 x 4 mm <sup>2</sup> cable code E     | 35086591    | 2 x 4 mm <sup>2</sup> + 2 x 0.5 mm <sup>2</sup> cable code E |

\*\* Available configurations with associated BOM (Bill Of Materials).

## DIMENSION MEASUREMENT SAMPLE



33367712



35149836

Part numbers, specifications, dimensions and performance data in this document are for general references only and are subject to change without notice. To verify product information, please contact an Aptiv representative.

CS-SP69-HP-EN0519