

HV AK PASS-THROUGH AK



AK Pass-Through

BENEFITS

- Very compact dimensions
- High robustness against vibrations
- Higher operating temperatures

FEATURES

- Ring terminal is bolted to device
- Cables are 360° individually shielded
- High voltage panel mount system
- Fully interchangeable with other AK supplier sources



AVAILABLE CONFIGURATIONS

Connector Type	Pass-through
Cable Exit Orientation	180°
Cable Range (mm ²)	16 - 50
Terminal Type	O-ring
Shielding	Individual
HVIL	None



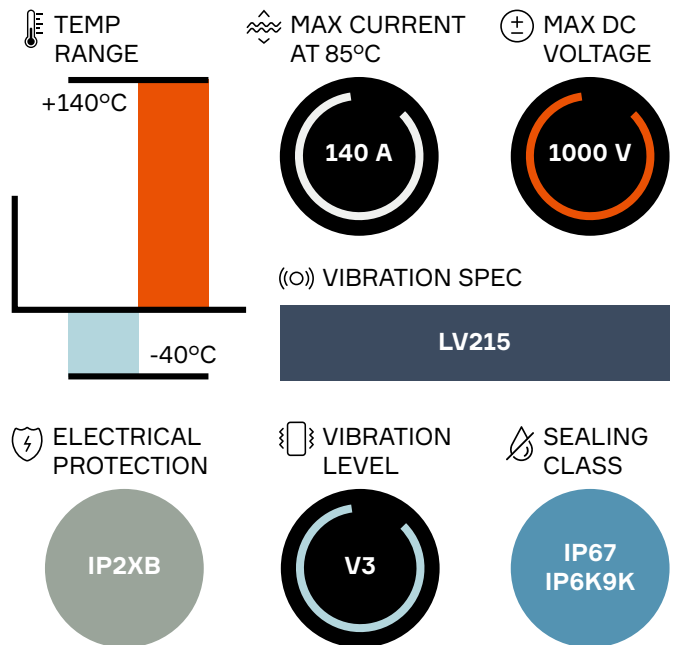
APPLICATIONS

High voltage / high current modules: inverter, battery, junction box, power electric box

See back page for representative part numbers and packaging dimensions.



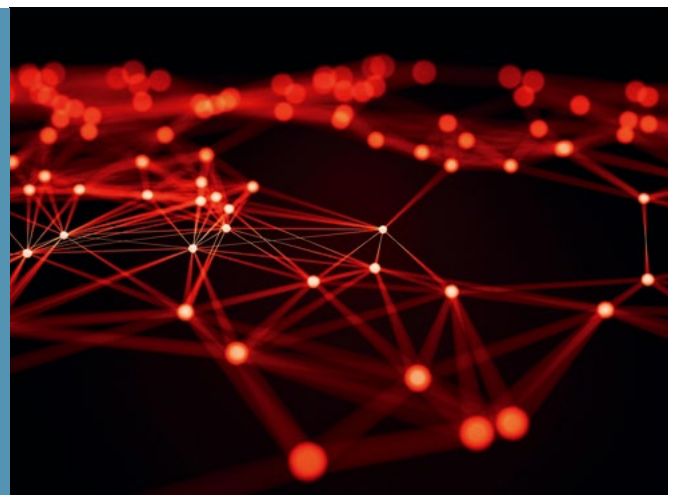
TECHNICAL CHARACTERISTICS



About Aptiv

Aptiv is a global technology company that develops safer, greener and more connected solutions enabling the future of mobility. Headquartered in Dublin, Aptiv has approximately 150,000 employees and operates 14 technical centers, as well as manufacturing sites and customer support centers in 45 countries.

Visit aptiv.com



Main Housing Body Components

Code	Number of ways			BOM
	1	2	3	
A	33340524	33340525	33340526	1
B	35066699	-	-	1

ASSOCIATED PARTS

Description	Cable size				BOM*
	16 mm ²	25 mm ²	35 mm ²	50 mm ²	
Peripheral Seal	35116341				1, 2 or 3
ASM shielding inner ferule	35172747				1, 2 or 3
Shielding outer ferrule	33340554	35172745	35172743	33340551	1, 2 or 3
Single wire seal	33340537	35172739	35172738	33340534	1, 2 or 3
Protection cover assembly	33340542	33340541	33340540	33340539	1, 2 or 3

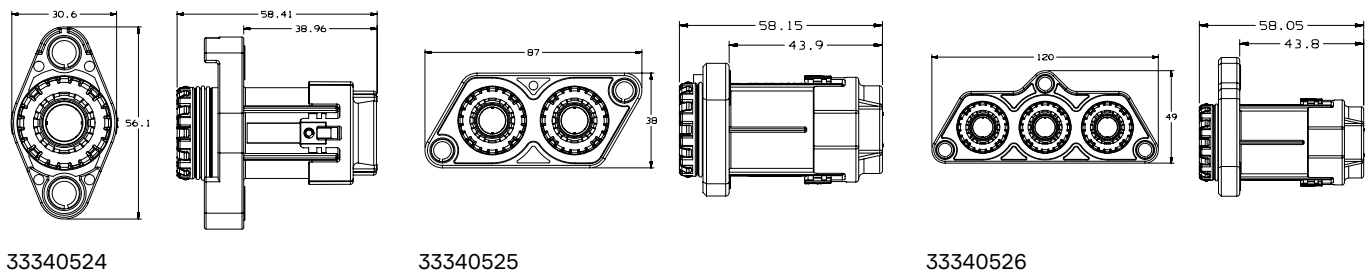
* Depending on if the component is for 1, 2 or 3 Way pass-through.

Component Kits

Code	Cable size				BOM
	16 mm ²	25 mm ²	35 mm ²	50 mm ²	
1 Way**					
A	33350177	33350176	33350175	33349598	1
B	-	-	-	35083309	1
2 Way**					
A	33350180	33350179	3335178	33349600	2
3 Way**					
A	33350183	33350182	33350181	33350072	3

** Available configurations with associated BOM (Bill Of Materials).

DIMENSION MEASUREMENT SAMPLE



Part numbers, specifications, dimensions and performance data in this document are for general references only and are subject to change without notice. To verify product information, please contact an Aptiv representative.

CS-SP71-HP-En0619