



## ATP (Anti-vandal) Pushbutton

NPI - Product training

January 2019

# ATP Product Overview

---

**Vandal-resistant switches** (also referred to as vandal-proof switches) are:

- Electrical switches may be subject to abuse and attempts to damage them,
- Devices that are outdoors must be able to withstand extreme environment
- Switches are intended to be operated by the general public
- Must withstand heavy use and even abuse such as attempts to damage with metal tools



## Key Product Features / Benefits

- Momentary or Lock version
- IP67 sealed & IK10 (Stainless steel bushing only)
- Light weight, High strength
- Corrosion resistance
- Various color of LED illuminate indicator
- Choices of pushbutton with symbol: spot, ring or power logo
- UL certified
- RoHS compliant



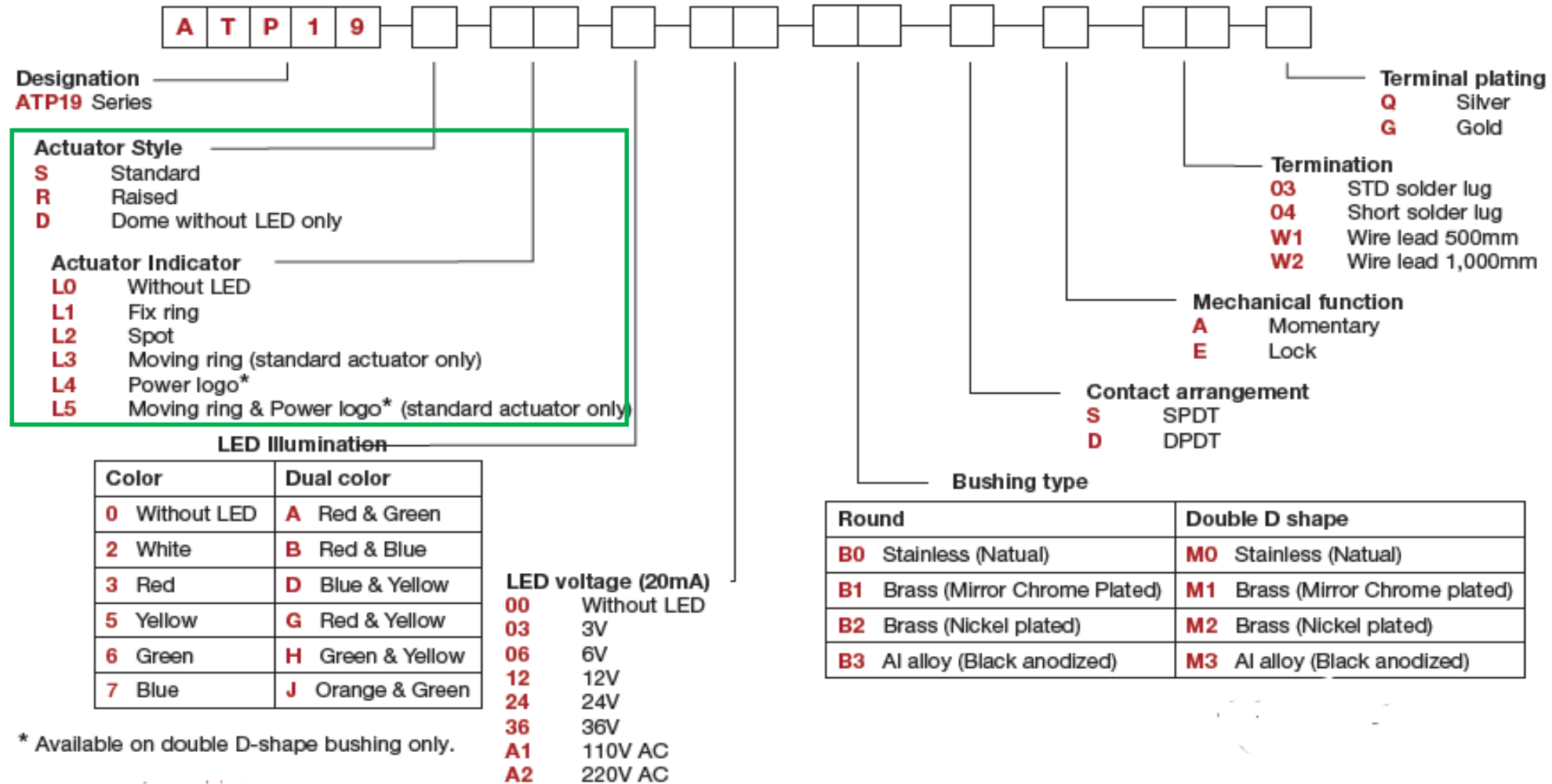
# ATP Product Overview - 19 & 22 series



Specifications	ATP19	ATP22
Rating	5A/250VAC. resistive load 3A/250VAC	
Electrical life	50,000 make-and-break cycles at full load.	
Mechanical life	Momentary 1,000,000. / Self-lock 500,000	
Insulation resistance	1,000MΩ Min. AT 500VDC	
Dielectric strength	2,000V RMS @ sea level	
Contact resistance	50mΩ MAX.@1A 12VDC (initial value)	
Travel	About 3.2mm.	
Operation pressure	1Pole 1.5~2.5N. / 2Pole 2.2~3.5N	
Torque	5~14Nm.	

# ATP Product Overview

## Understanding of product characteristic & functionality



# ATP series - Actuator style & indicators

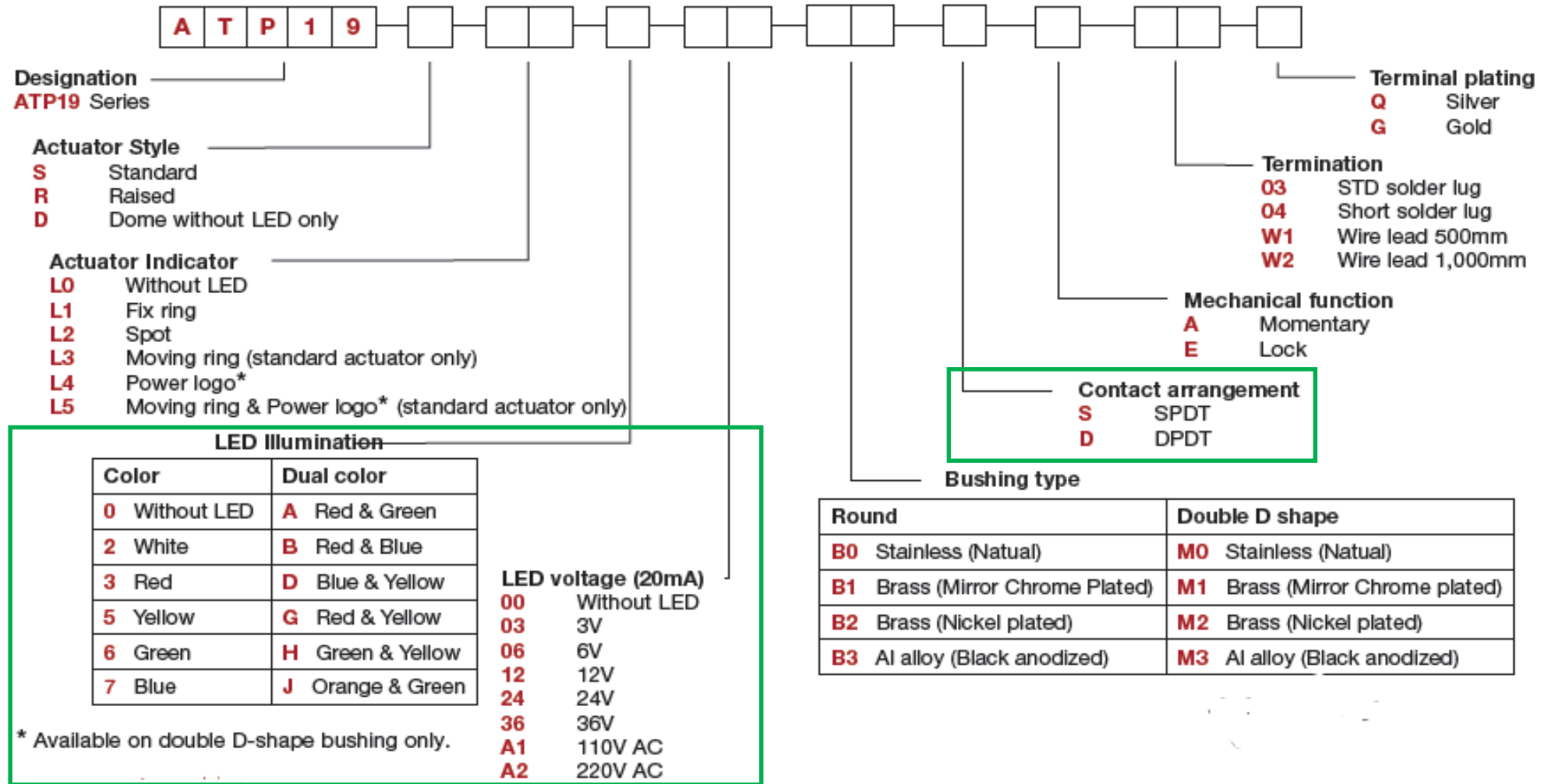


Style	Flat	Fix Ring	Moving Ring	Spot	Ring + Power	Raised	Raised - Spot	Raised-Ring	Raised - Power	Dome	Dome - Ring	Dome - Ring + Power
ATP 16	<i>Coming soon</i>				●	●		●			●	●
ATP 19	●	●	●	●	●	●	●		●	●	●	
ATP 22	●		●		●							

● Refer to datasheet for availability

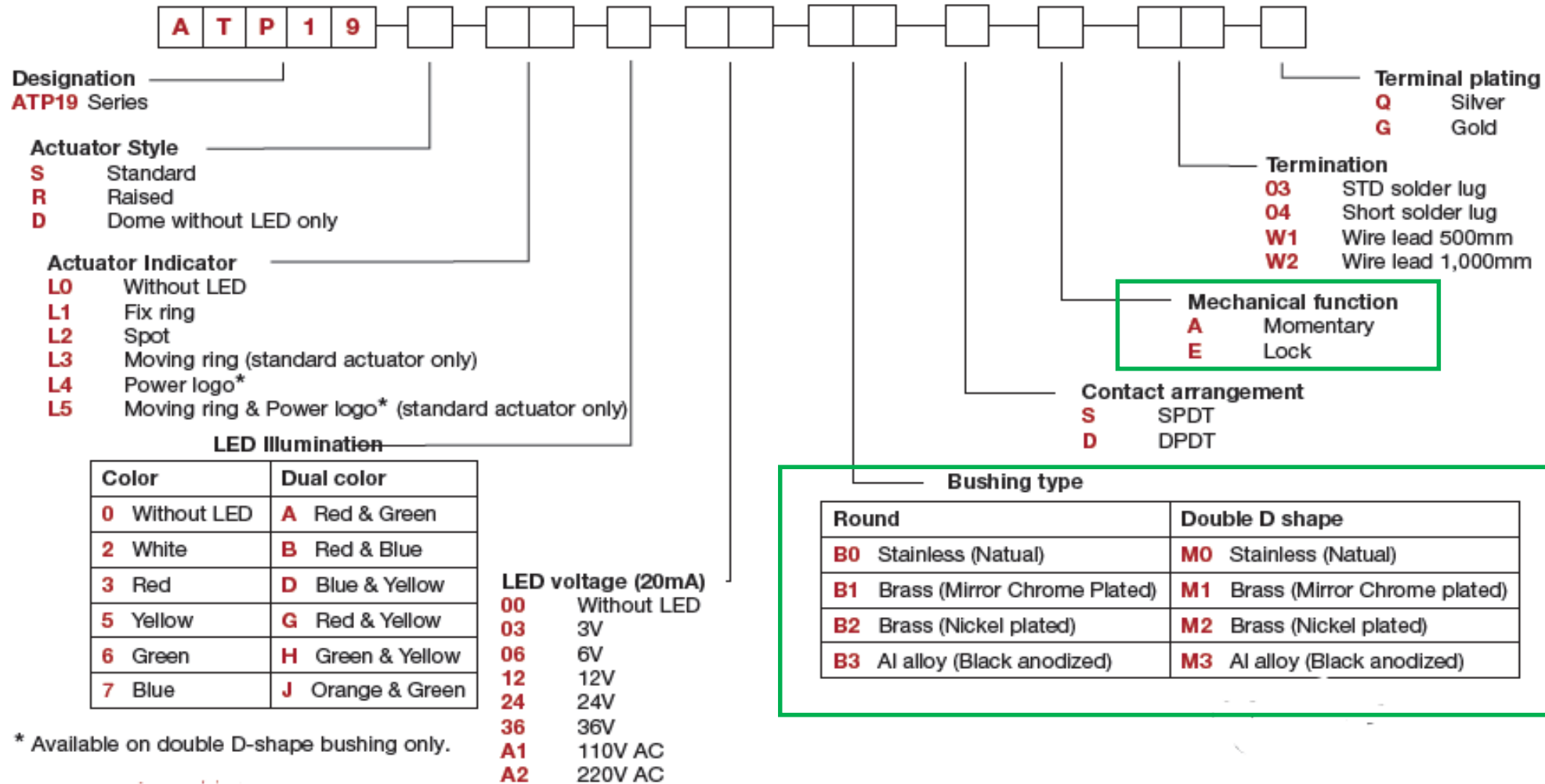
# ATP Product Overview

## Understanding of product options code vs Characteristics & Functionality



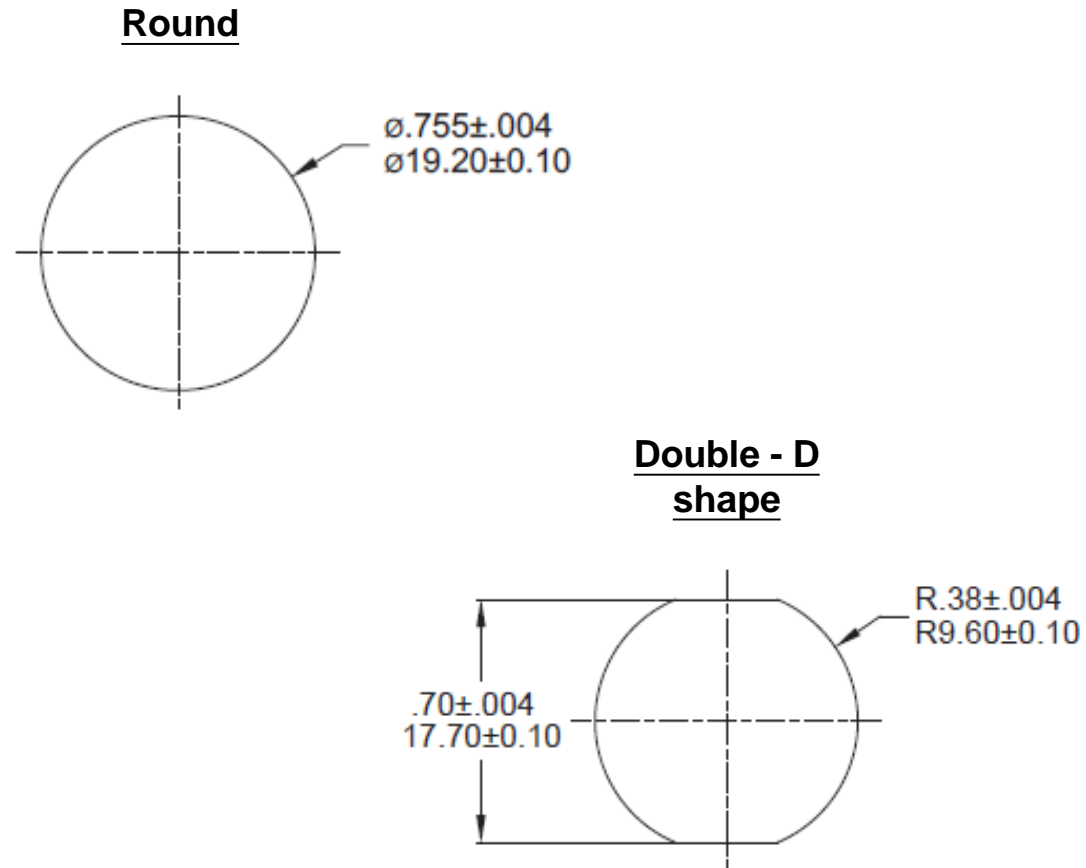
# ATP Product Overview

## Understanding of product options code vs Characteristics & Functionality



\* Available on double D-shape bushing only.

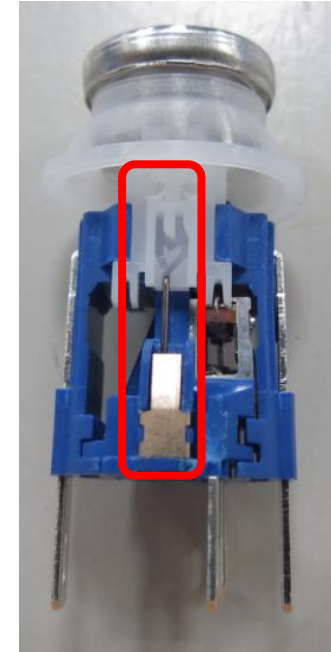
# ATP Product Overview – Momentary & Lock



Momentary



Lock



# ATP Product Overview - IP / IK Rating

IP Number	First Digit - SOLIDS	Second Digit - LIQUIDS
IP66	Protected from total dust ingress.	Protected from high pressure water jets from any direction.
IP67	Protected from total dust ingress.	Protected from immersion between 15 centimeters and 1 meter in depth.
IP68	Protected from total dust ingress.	Protected from long term immersion up to a specified pressure.
IP69K	Protected from total dust ingress.	Protected from steam-jet cleaning.

	IK01-05	IK06	IK07	IK08	IK09	IK10	IK10+	IK10+5
<b>Impact energy (joules)</b>	< 1	1	2	5	10	20	40	200
<b>Mass (kg)</b>	0.25	0.5	0.5	1.7	5	5	10	50
<b>Drop height (cm)</b>	< 30	20	40	30	20	40	40	40
<b>Material</b>	Plastic			Metal				

# ATP Market Overview

## Target markets

- Control Panels, Heavy Equipment, Industrial Instruments
- Lifts / Escalator, Security System,
- Communication equipment, Medical equipment

## Typical Applications

- Public interactive kiosks - tourist information or gov't forms
- Elevator buttons and security switches
- Pedestrian crossing signal activation switches
- Intercom "push-to-talk" devices at the entrance
- Electronic door switches for garages and mechanical gates
- Parking lot ticket machines & ticket paying stations
- Alarm, safety, and security systems
- Automatic food and drink vending machines
- Public address systems in schools & community centres
- Rental equipment that may be subjected to heavy use



# ATP Market Overview - Key Focus Applications



Door Intercoms



Access Controls



Emergency / Panic Buttons



Handicap / Assistance Buttons



Crosswalk Controls



Campus Security Phones



ATM "Push for Assistance"



Parking Lot Ticket Dispensers



Parking Payment Machines



Subway / Train Ticket Machines