



ATP16 Series Anti-Vandal Sealed Pushbutton Switch

NEW

Pushbutton A

Features/Benefits

- Momentary or Lock version
- IP67 sealed
- Rated at 2A / 36 Vdc
- 1,000,000 life cycle
- Various colors of LED illuminate indicator
- Choices of actuator with ring or power logo
- RoHS compliant

Typical Applications

- Alarm, safety and security systems
- Intercom "push-to-talk" devices
- Automatic food and drink vending machines
- Parking lot ticket machines & ticket paying stations
- Industrial Instruments



Specifications

FUNCTION: SPST
CONTACT ARRANGEMENT: N.O.
MOUNTING TYPE: Threaded front panel mount
TORQUE FOR THREADED BODY: 11.5 kgf/cm

Mechanical

OPERATING LIFE: Momentary 1,000,000 cycles
Lock 100,000 cycles
TOTAL TRAVEL: Momentary 2.0 mm; Lock 2.3 mm
OPERATING FORCE: 4.5 ± 1.5N

Electrical

CONTACT RATING: 2A / 36Vdc
OPERATING LIFE: Make-and-break cycles at full load
200,000 (Momentary)
100,000 (Lock)
DIELECTRIC STRENGTH: 2,000 V RMS @ sea level
INSULATION RESISTANCE: 1,000 MΩ min. @ 500 VDC
INITIAL CONTACT RESISTANCE : 50 mΩ max @1A 12VDC

Materials

BUSHING: Stainless steel / Aluminum alloy, anodized
BASE: PBT (UL 94-A0), Nylon 6/6 (lock version)
ACTUATOR: PC (UL 94-V2); POM (lock version)
INTERNAL ASSEMBLY: POM / PA66
SPRING: Steel
SEALING / O-ring: Silicone (Translucent) / Silicone
TERMINALS / CONTACT: Brass, Silver or gold plated
HEX NUT: Brass (Nickel plated)

Operating Environment

OPERATING TEMPERATURE: -20°C to +70°C
SEALING / PROTECTION: IP67

NOTE: Specifications and materials listed above are for switches with standard options. For information on specific and custom switches, please contact Customer Service.

Build-A-Switch

To order, simply select desired option from each category and place in the appropriate box.



Designation
ATP16 Series

Actuator Style
D Dome*
S Standard**

Actuator Indicator
L1 Ring
L5 Ring & Power logo

LED Illumination

Color	Dual color
0 Without LED	A Red & Green
2 White	R RGB***
3 Red	
4 Orange***	
5 Yellow	
6 Green	
7 Blue	

LED voltage DC
00 0V without resistor
03 3V
06 6V
12 12V
24 24V

Terminal plating
G Gold flash

Termination
04 Solder lug
W1 Wire lead 500mm ****

Mechanical function
A Momentary (Double D bushing)
E Lock (D shape bushing)

Contact arrangement
S SPST

Bushing type

B3 Al alloy (Black anodized)
B4 Al alloy (Natural anodized)
M0 Stainless (Natural), Round***
M4 Stainless (Natural), Double D***

* For bushing type B3 and B4 only.

** Available on bushing type M0 & M4 only.

*** Available on momentary function only.

**** Available upon request, please consult your sales representative for details.



19 Jan 21

NEW

ATP16 Series Anti-Vandal Sealed Pushbutton Switch



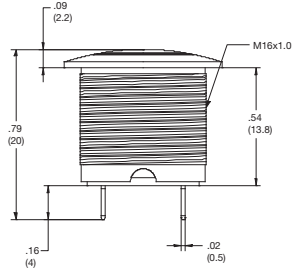
A
Pushbutton

STANDARD VIEW

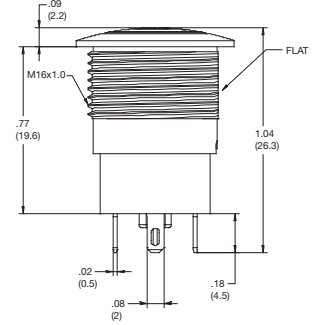
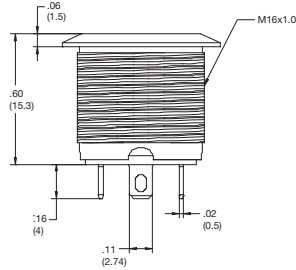
MOMENTARY

LOCK

DOME



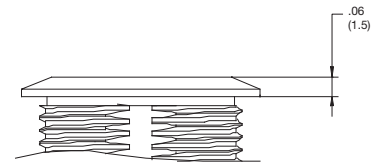
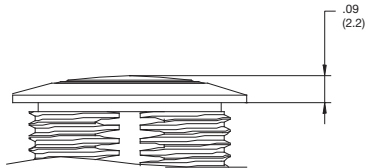
STANDARD / FLAT



ACTUATOR STYLE

D DOME

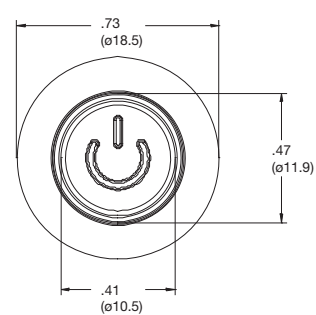
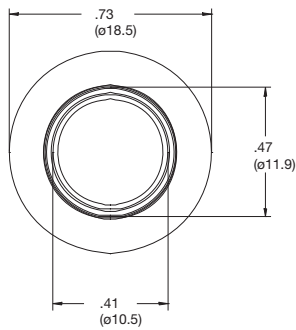
S STANDARD / FLAT



ACTUATOR INDICATOR

L1 RING

L5 RING & POWER





ATP16 Series Anti-Vandal Sealed Pushbutton Switch

NEW

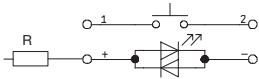
Pushbutton

A

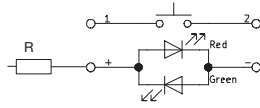
CIRCUIT

MOMENTARY

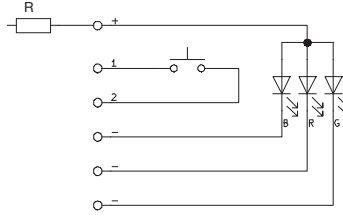
SINGLE COLOR LED



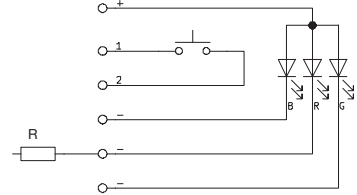
DUAL COLOR LED



RGB LED



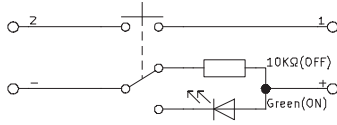
6 / 12 / 24V LED



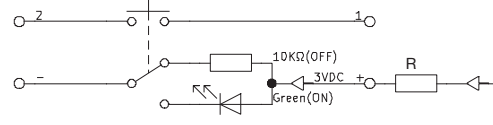
3V LED

LOCK

SINGLE COLOR LED

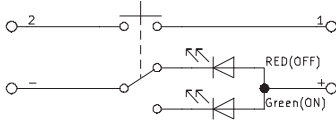


3V LED

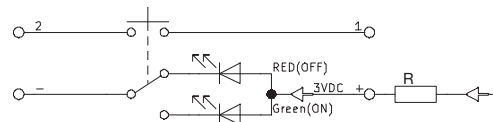


6 / 12 / 24V LED

DUAL COLOR LED



3V LED



6 / 12 / 24V LED

R: Resistor value is according to the LED voltage applied.

Resistor value (Apply LED Voltage)
LED input 3 VDC, 47 ohms (Red/Yellow/Orange LED type only)
LED input 6 VDC, 180 ohms
LED input 12 VDC, 470 ohms
LED input 24 VDC, 1000 ohms

Ohms value of resistance tolerance: $\pm 5\%$

NEW

ATP16 Series Anti-Vandal Sealed Pushbutton Switch

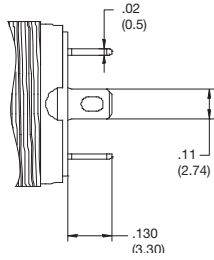


A
Pushbutton

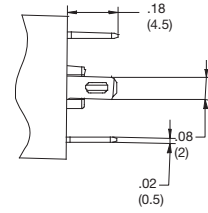
TERMINATION

04 SOLDER LUG

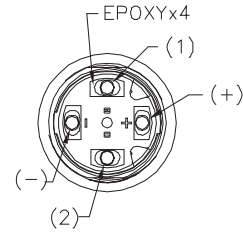
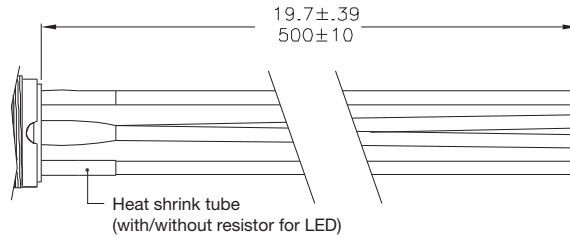
MOMENTARY



LOCK



W1 WIRE LEAD 500MM*

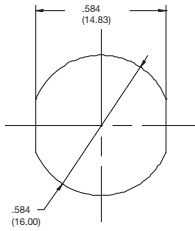


* Available upon request, please consult your sales representative for details.

PANEL CUTOUT

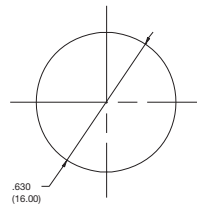
B3, B4 & M4

DOUBLE D



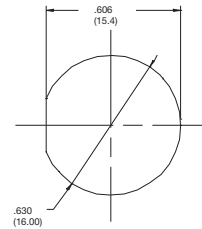
M0

ROUND



B3 & B4

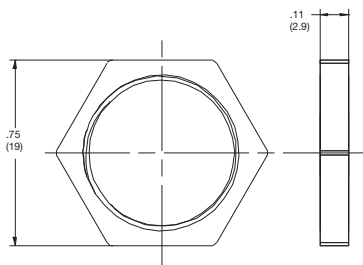
D SHAPE



HARDWARE

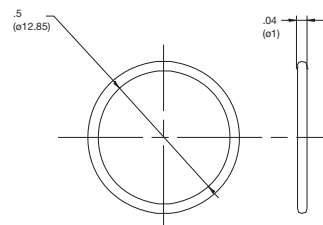
HEX NUT

Order PN: ATP160013



O RING

Order PN: ATP160014



19 Jan 21

Dimensions are shown: mm (inches)
Specifications and dimensions subject to change

NEW

ATP19 Series Anti-Vandal Sealed Pushbutton Switch



A
Pushbutton

Features/Benefits

- Momentary or Lock version
- IP67 sealed & IK10 (Stainless steel bushing)
- Capable of up to 3A resistive load
- 50,000 life cycle at full load
- Various colors of LED illuminate indicator
- Choices of pushbutton with symbol on spot, ring or power logo

Typical Applications

- Control Panels including car park and traffic light
- Industrial Instruments
- Lifts / Escalator
- Communication equipment
- Alarm, safety and security systems



C&K US

Specifications

FUNCTION: Single pole and double poles
 CONTACT ARRANGEMENT: N.O. and N.C.
 MOUNTING TYPE: Threaded front panel mount
 TORQUE FOR THREADED BODY: 5-14 Nm

Mechanical

OPERATING LIFE: Momentary 1,000,000 cycles
 Self-lock 500,000 cycles
 TOTAL TRAVEL: about 3.2 mm
 OPERATING FORCE: 1 pole 2.5 ± 1N
 2 pole 3.5 ± 1N

Electrical

CONTACT RATING: 1th 5A/250VAC
 3A / 250VAC
 3A / 28VDC
 OPERATING LIFE: 50,000 make-and-break cycles at full load
 DIELECTRIC STRENGTH: 2,000 V RMS @ sea level
 INSULATION RESISTANCE: 1,000 MΩ min. @ 500 VDC
 INITIAL CONTACT RESISTANCE : 50 mΩ max @1A 12VDC

Materials

BUSHING: Stainless steel / Nickel plated brass / Aluminum alloy
 BASE: PBT (UL 94-A0), PC (UL 94-V2)
 ACTUATOR: PC (UL 94-V2); Stainless steel / Nickel plated brass / Aluminum alloy
 INTERNAL ASSEMBLY: POM / PA66
 SPRING: Steel
 SEALING / O-ring: Silicone
 TERMINALS: Brass with silver or gold plated
 CONTACT: Copper, silver plated

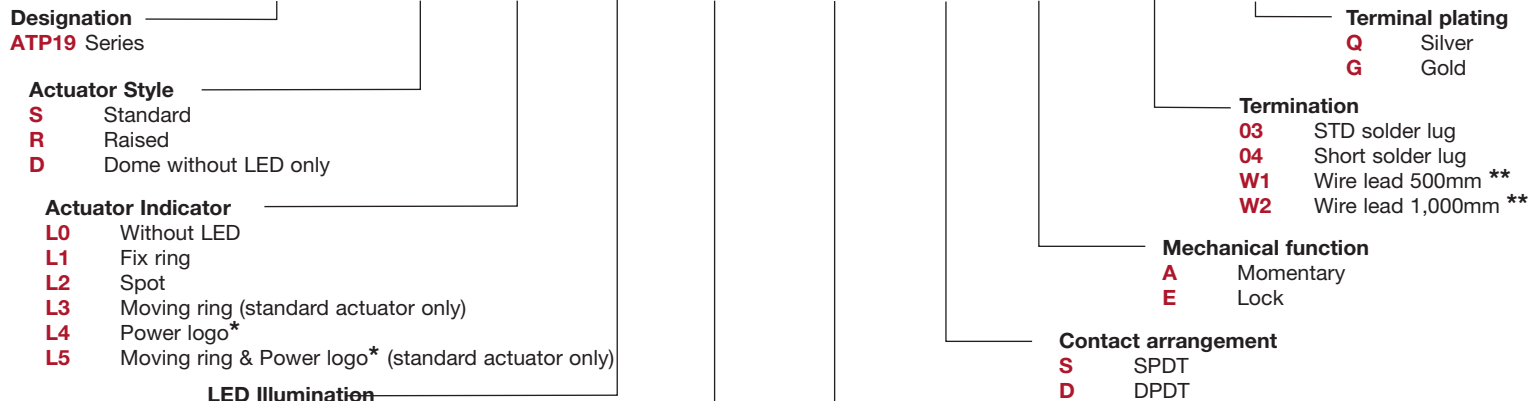
Operating Environment

OPERATING TEMPERATURE: -20°C to +55°C
 SEALING / PROTECTION: IP67 / IK10 (Stainless steel bushing)

NOTE: Specifications and materials listed above are for switches with standard options.
 For information on specific and custom switches, please contact Customer Service.

Build-A-Switch

To order, simply select desired option from each category and place in the appropriate box.



Color	Dual color
0 Without LED	A Red & Green
2 White	B Red & Blue
3 Red	D Blue & Yellow
5 Yellow	G Red & Yellow
6 Green	H Green & Yellow
7 Blue	J Orange & Green

LED voltage (20mA)	
00	Without LED
03	3V
06	6V
12	12V
24	24V
36	36V
A1	110V AC
A2	220V AC

Round	Double D shape
B0 Stainless (Natural)	M0 Stainless (Natural)
B1 Brass (Mirror Chrome Plated)	M1 Brass (Mirror Chrome plated)
B2 Brass (Nickel plated)	M2 Brass (Nickel plated)
B3 Al alloy (Black anodized)	M3 Al alloy (Black anodized)

* Available on double D-shape bushing only.
 ** Available upon request, please contact your sales representative for details.



Dimensions are shown: mm (inches)
 Specifications and dimensions subject to change



19 Jan 21



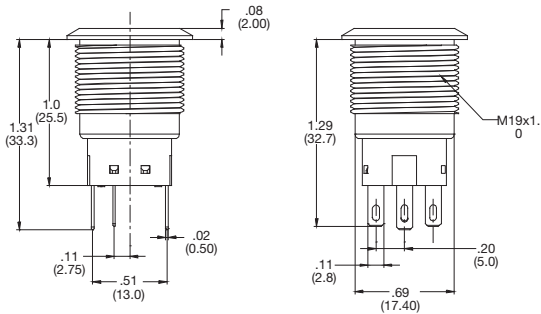
ATP19 Series Anti-Vandal Sealed Pushbutton Switch

NEW

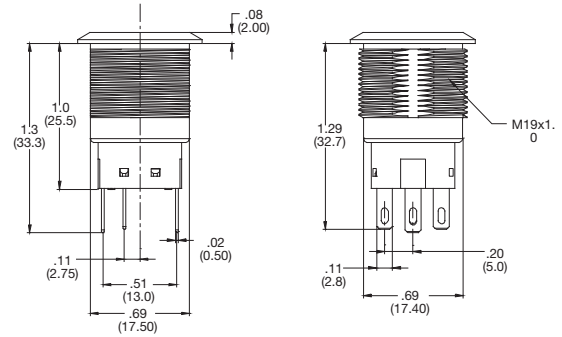
Pushbutton
A

STANDARD VIEW

ROUND BUSHING

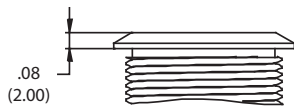


DOUBLE-D BUSHING

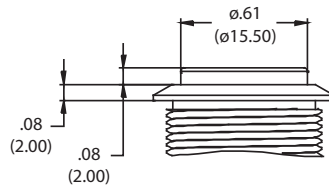


ACTUATOR STYLE

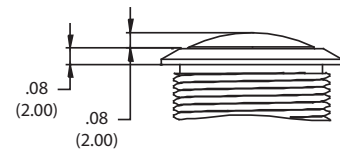
S STANDARD



R RAISED

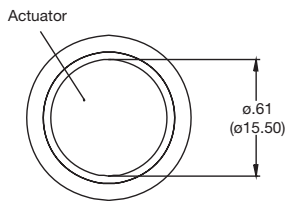


D DOME

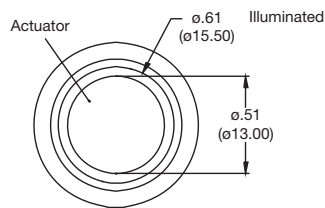


ACTUATOR INDICATOR

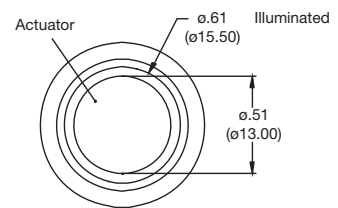
L0 WITHOUT LED



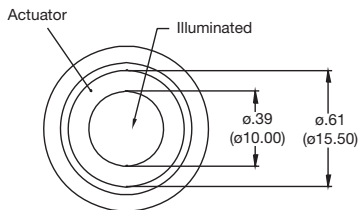
L1 FIX RING



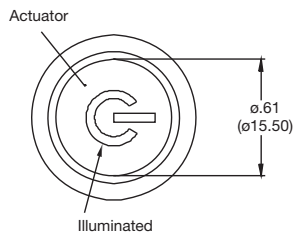
L3 MOVING RING



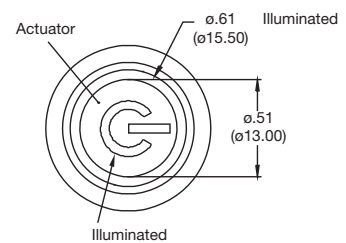
L2 SPOT



L4 POWER LOGO



L5 POWER & MOVING RING



NEW

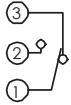
ATP19 Series Anti-Vandal Sealed Pushbutton Switch



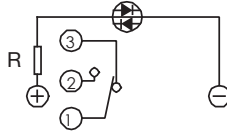
A
Pushbutton

CIRCUIT

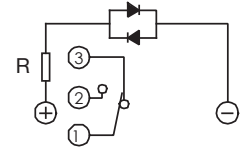
SPDT



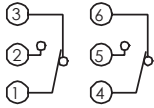
SPDT - SINGLE COLOR LED



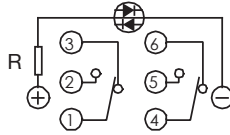
SPDT - DUAL COLOR LED



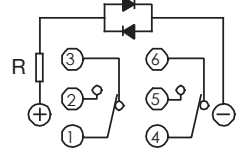
DPDT



DPDT - SINGLE COLOR LED

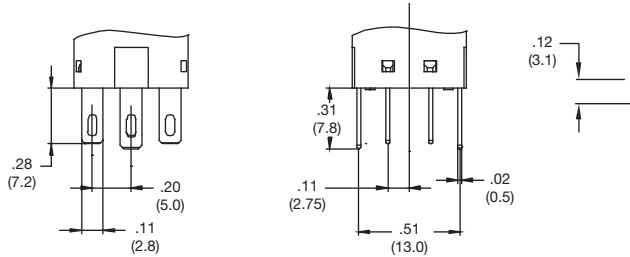


DPDT - DUAL COLOR LED

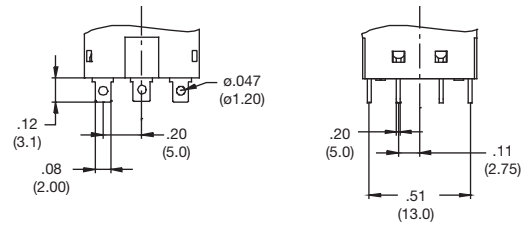


TERMINATION

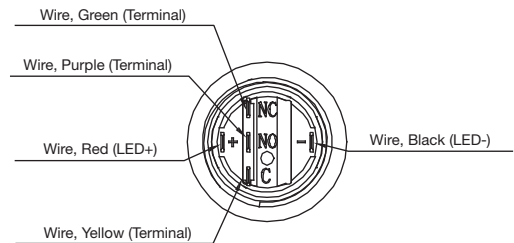
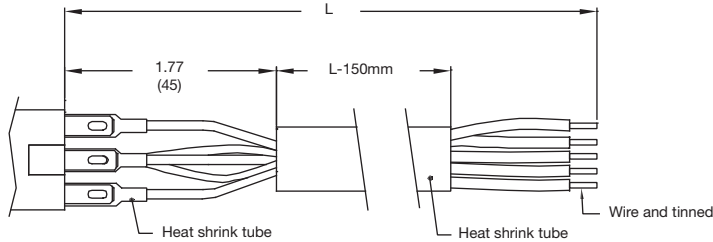
03 SOLDERLUG



04 SHORT SOLDER LUG



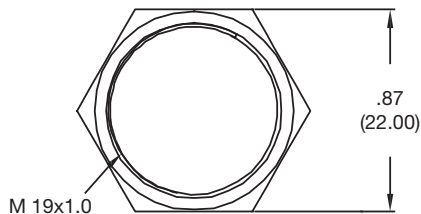
W1 OR W2 WIRE LEAD



HARDWARE

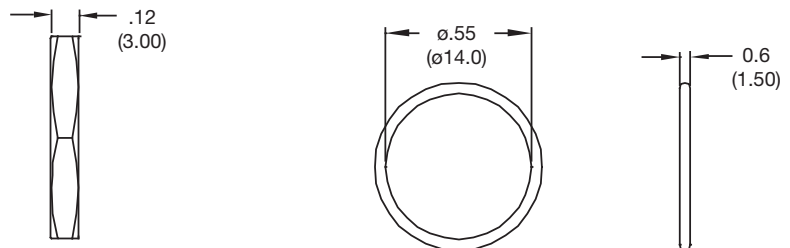
HEX NUT

Order PN: ATP190016



O RING

Order PN: ATP190017





ATP22 Series Anti-Vandal Sealed Pushbutton Switch

NEW

Features/Benefits

- Momentary or Lock version
- IP67 sealed & IK10 (Stainless steel bushing)
- Capable of up to 3A resistive load
- 50,000 life cycle at full load
- Various colors of LED illuminate indicator
- Choices of pushbutton with symbol on spot, ring or power logo

Typical Applications

- Control Panels including car park and traffic light
- Industrial Instruments
- Lifts / Escalator
- Communication equipment
- Alarm, safety and security systems



Specifications

FUNCTION: Single pole and double poles
 CONTACT ARRANGEMENT: N.O. and N.C.
 MOUNTING TYPE: Threaded front panel mount
 TORQUE FOR THREADED BODY: 5-14 Nm

Mechanical

OPERATING LIFE: Momentary 1,000,000 cycles
 Self-lock 500,000 cycles
 TOTAL TRAVEL: about 3.2 mm
 OPERATING FORCE: 1 pole 2.5 ± 1N
 2 pole 3.5 ± 1N

Electrical

CONTACT RATING: 1th 5A/250VAC
 3A / 250VAC
 3A / 28VDC
 OPERATING LIFE: 50,000 make-and-break cycles at full load
 DIELECTRIC STRENGTH: 2,000 V RMS @ sea level
 INSULATION RESISTANCE: 1,000 MΩ min. @ 500 VDC
 INITIAL CONTACT RESISTANCE : 50 mΩ max @1A 12VDC

Materials

BUSHING: Stainless steel / Aluminum alloy
 BASE: PBT (UL 94-A0), PC (UL 94-V2)
 ACTUATOR: PC; Stainless steel / Aluminum alloy
 INTERNAL ASSEMBLY: POM / PA66
 SPRING: Steel
 SEALING / O-ring: Silicone
 TERMINALS: Brass with silver or gold plated
 CONTACT: Copper, silver plated

Operating Environment

OPERATING TEMPERATURE: -20°C to +55°C
 SEALING / PROTECTION: IP67 / IK10 (Stainless steel bushing)

NOTE: Specifications and materials listed above are for switches with standard options. For information on specific and custom switches, please contact Customer Service.

Build-A-Switch

To order, simply select desired option from each category and place in the appropriate box.



Designation
 ATP22 Series

Actuator Style
 S Standard

Actuator Indicator
 L0 Without LED
 L3 Moving ring
 L6 Ring LED*
 L7 Ring LED + power logo**
 L8 Ring LED + power logo***

Illumination

Color	Dual color
0 Without LED	A Red & Green
2 White	B Red & Blue
3 Red	D Blue & Yellow
5 Yellow	G Red & Yellow
6 Green	H Green & Yellow
7 Blue	J Orange & Green

LED voltage (20mA)

00 Without LED
 03 3V
 06 6V
 12 12V
 24 24V
 36 36V
 A1 110V AC
 A2 220V AC

Termination
 03 STD solder lug
 W1 Wire lead 500mm****
 W2 Wire lead 1,000mm****

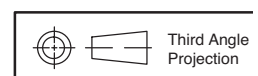
Mechanical function
 A Momentary
 E Lock

Contact arrangement
 S SPDT
 D DPDT

Bushing type
 B0 Stainless (Round)
 B3 Al alloy: black anodized (Round)
 M0 Stainless (Double D-shape)

Terminal plating
 Q Silver
 G Gold

* Available on ring color CAP of red/green/blue only.
 ** Power logo and ring with clear color CAP available on double D-shape bushing only.
 *** Power logo and ring with red/green/blue color CAP available on double D-shape bushing only.
 **** Available upon request, please contact your sales representative for details.



Dimensions are shown: mm (inches)
 Specifications and dimensions subject to change



NEW

ATP22 Series Anti-Vandal Sealed Pushbutton Switch

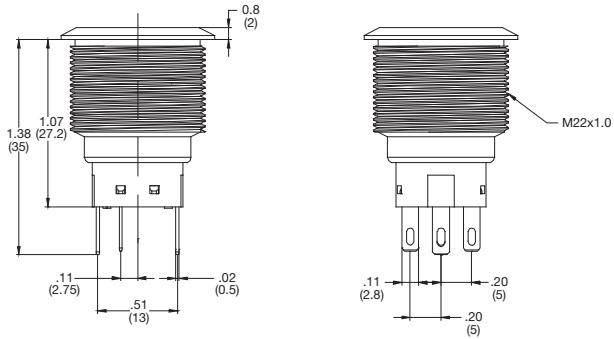


A

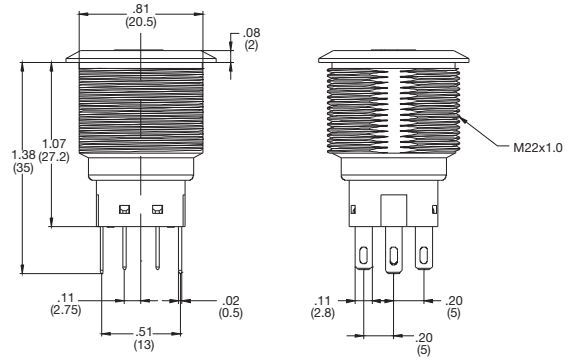
Pushbutton

STANDARD VIEW

ROUND BUSHING

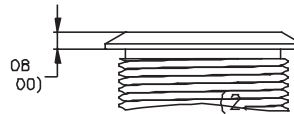


DOUBLE-D BUSHING



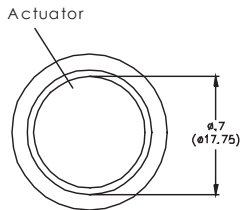
ACTUATOR STYLE

S STANDARD

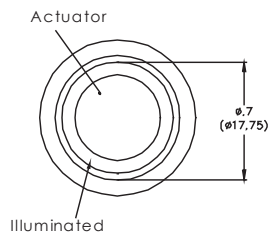


ACTUATOR INDICATOR

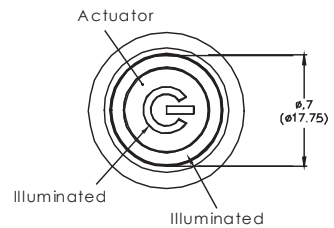
L0 WITHOUT LED



L3 & L6 RING LED



L7 & L8 POWER & RING





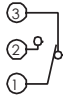
ATP22 Series Anti-Vandal Sealed Pushbutton Switch

NEW

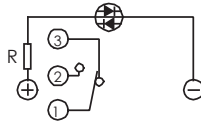
Pushbutton
A

CIRCUIT

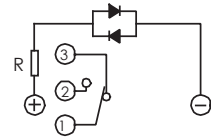
SPDT



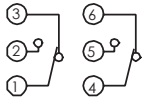
SPDT - SINGLE COLOR LED



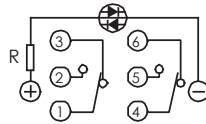
SPDT - DUAL COLOR LED



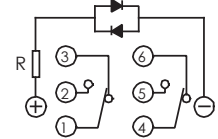
DPDT



DPDT - SINGLE COLOR LED

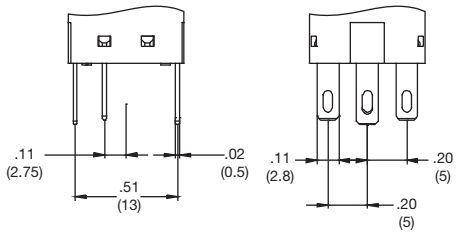


DPDT - DUAL COLOR LED

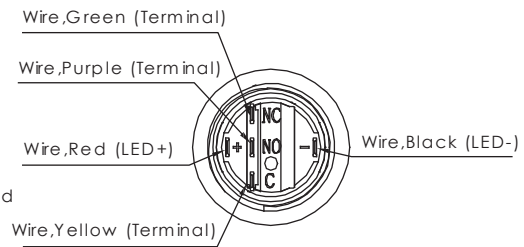
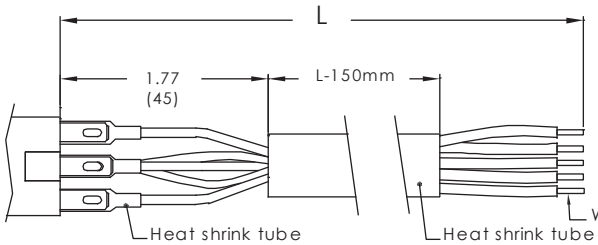


TERMINATION

03 SOLDERLUG



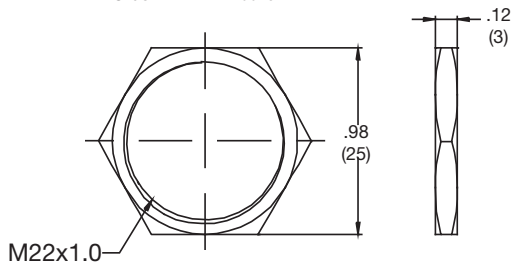
W1 OR W2 WIRE LEAD



HARDWARE

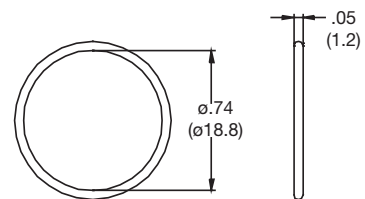
HEX NUT

Order PN: ATP220019



O RING

Order PN: ATP220020



19 Jan 21

Dimensions are shown: mm (inches)
Specifications and dimensions subject to change



ATPS19 Series Anti-Vandal Short-Body Sealed Pushbutton Switch

NEW

Pushbutton A

Features/Benefits

- **Momentary**
- **IP67 sealed & IK10 (Stainless steel bushing)**
- **Rated at 2A / 36 Vdc**
- **1,000,000 mechanical lifecycles**
- **Various colors of LED illuminate indicator**
- **Choices of actuator with ring or power logo**
- **RoHS compliant**

Typical Applications

- **Alarm, safety & security systems**
- **Intercom "push-to-talk" devices**
- **Automatic food & drink vending machines**
- **Parking lot ticket machines & ticket paying stations**
- **Industrial instruments**



Specifications

FUNCTION: SPST
CONTACT ARRANGEMENT: N.O.
MOUNTING TYPE: Threaded front panel mount
TORQUE FOR THREADED BODY: 11.5 kgf/cm

Mechanical

MECHANICAL LIFE: 1,000,000 cycles
TOTAL TRAVEL: 1.8 ± 0.2 mm
OPERATING FORCE: 4.5 ± 1.5N

Electrical

CONTACT RATING: 2A / 36Vdc
ELECTRICAL LIFE: Make-and-break cycles at full load
200,000
DIELECTRIC STRENGTH: 2,000 V RMS @ sea level
INSULATION RESISTANCE: 1,000 MΩ min. @ 500 VDC
INITIAL CONTACT RESISTANCE : 50 mΩ max @1A 12VDC

Materials

BUSHING: Stainless steel
BASE: PA66, white (UL 94-V0)
ACTUATOR: PC, translucent (UL 94-V2), std steel
INTERNAL ASSEMBLY: PC, transparent (UL 94V2)
SPRING: Steel
SEALING / O-ring: Silicone (Translucent) / Silicone
TERMINALS / CONTACT: Brass, gold flash plated / Brass, silver alloy
HEX NUT: Brass (Nickel plated)

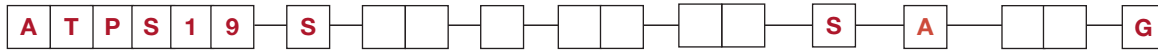
Operating Environment

OPERATING TEMPERATURE: -20°C to +70°C
SEALING / PROTECTION: IP67

NOTE: Specifications and materials listed above are for switches with standard options. For information on specific and custom switches, please contact Customer Service.

Build-A-Switch

To order, simply select desired option from each category and place in the appropriate box.



Designation _____

ATPS19 Series

Actuator Style
S Standard

Actuator Indicator
L0 Without LED
L1 Ring
L5 Ring & Power logo

LED Illumination

Color	Dual Color
0 Without LED	A Red & Green
2 White	B Red & Blue
3 Red	
5 Yellow	
6 Green	
7 Blue	

LED Voltage DC
00 0V without resistor
03 3V (47Ω with red/yellow LED)
06 6V (180Ω)
12 12V (470Ω)
24 24V (1000Ω)

Bushing type

M0 Stainless (Natural), Round
M2 Stainless (Natural), D shape
M4 Stainless (Natural), Double D

Terminal Plating
G Gold flash

Termination
04 Solder lug
W1 Wire lead 500mm

Mechanical Function
A Momentary

Contact Arrangement
S SPST

NEW

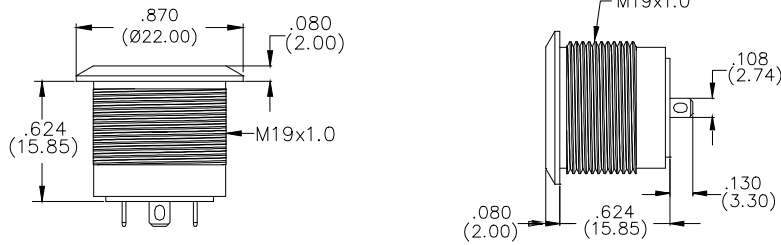
ATPS19 Series Anti-Vandal Short-Body Sealed Pushbutton Switch



A
Pushbutton

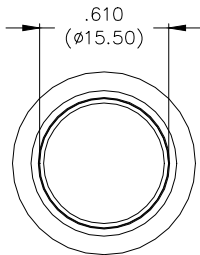
STANDARD VIEW

STANDARD

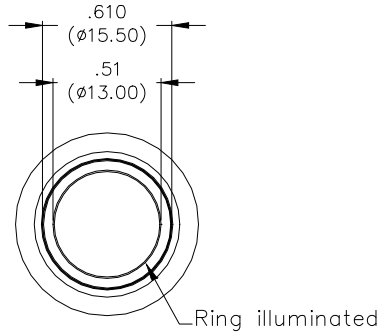


ACTUATOR INDICATOR

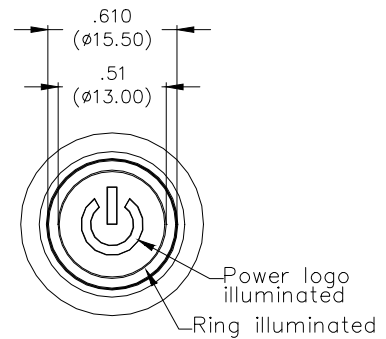
L0 WITHOUT LED



L1 RING



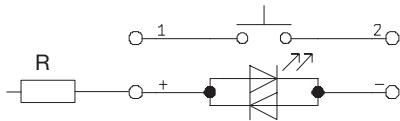
L5 RING & POWER



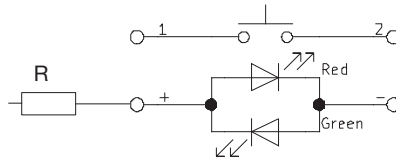
CIRCUIT

MOMENTARY

SINGLE COLOR LED



DUAL COLOR LED



R: Resistor value is according to the LED voltage applied.

Resistor value (Apply LED Voltage)
LED input 3 VDC, 47 ohms (Red/Yellow LED type only)
LED input 6 VDC, 180 ohms
LED input 12 VDC, 470 ohms
LED input 24 VDC, 1000 ohms

Ohms value of resistance tolerance: ±5%

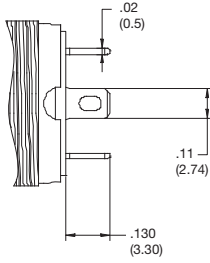


ATPS19 Series Anti-Vandal Short-Body Sealed Pushbutton Switch **NEW**

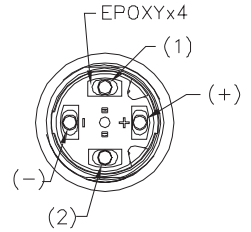
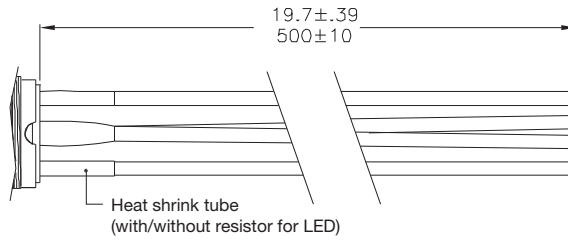
A Pushbutton

TERMINATION

04 SOLDER LUG



W1 WIRE LEAD 500MM* (Multi-wire lead AWG20, Section 0.6 mm², UL approved)

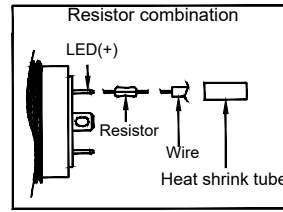


Non-LED

Description	Wire color
Terminal 1	Black
Terminal 2	Black

With LED

Description	Wire color
Terminal 1	Black
Terminal 2	Black
LED+	Red
LED-	Green

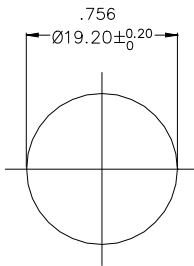


* Special length, please consult your sales representative for details.

PANEL CUTOUT

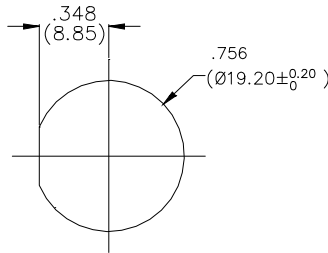
M0

ROUND



M2

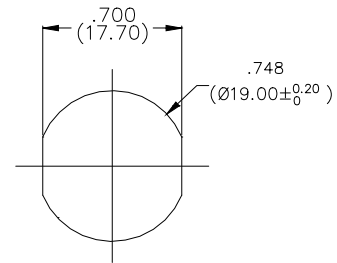
D SHAPE



M4

DOUBLE D

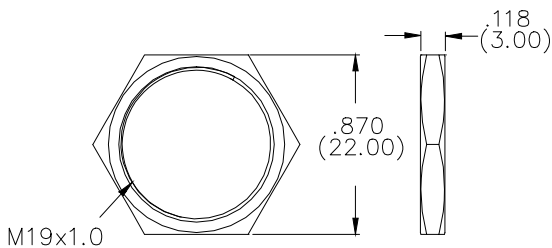
Thickness: 6.0mm (Max.)



HARDWARE

HEX NUT

Order PN: ATP190016



O RING

Order PN: ATP190017

