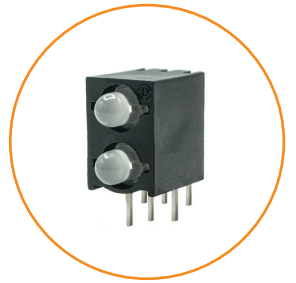
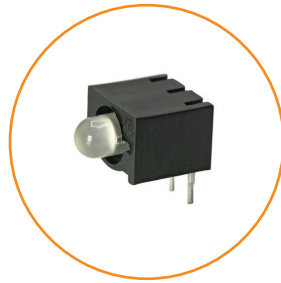
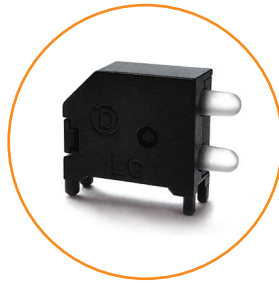
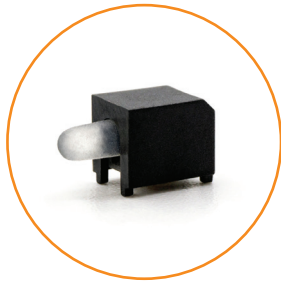
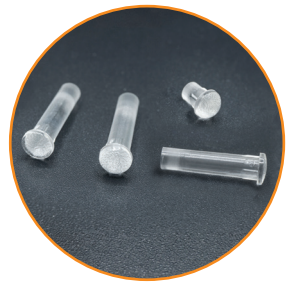
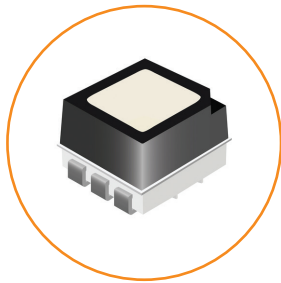
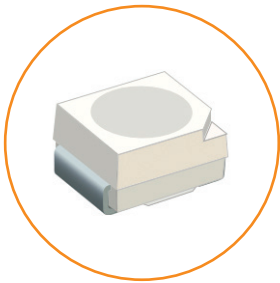




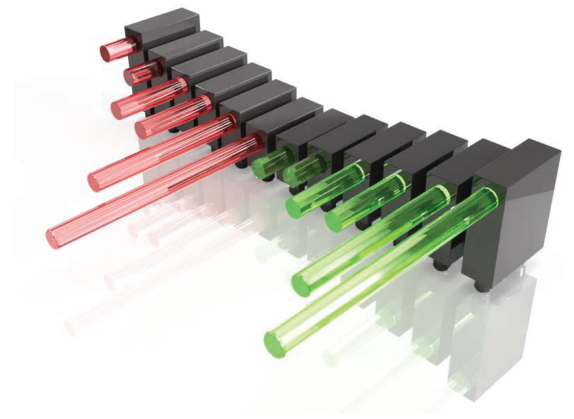
# Product Introductions



Dialight

1501 Route 34 South  
Farmingdale, NJ 07727  
[www.dialightsignalsandcomponents.com](http://www.dialightsignalsandcomponents.com)

SEPTEMBER 2022



## Lighting The Way

Founded in 1938, Dialight is a leading supplier of Optoelectronic components, and an innovator in LED board-level through-hole and surface mount indication, including Prism® SMDs and Optopipe® Light Pipes.

Combined with our LED panel mount line and based LED bulbs, we offer the widest range of reliable indicator products.

It is our commitment to our customers to continue to provide the most reliable, high-quality LED products, with best-in-class service and support.

---

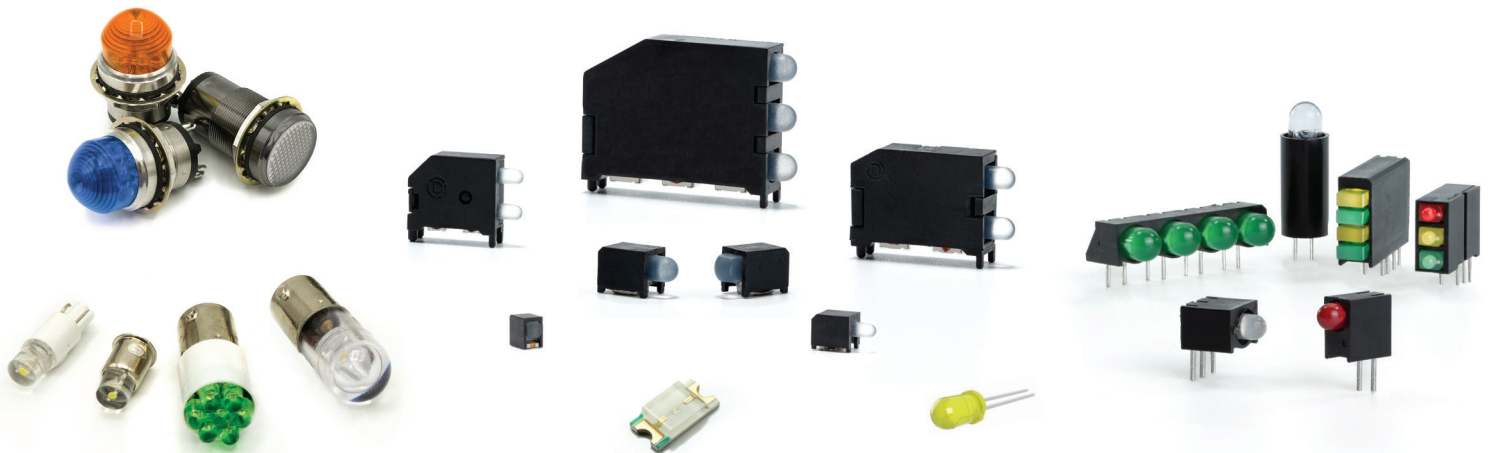
## Dialight Contact

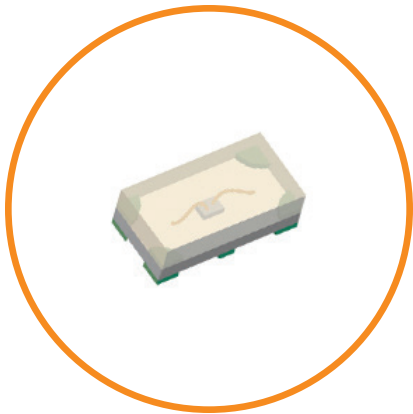
**Alain Bouville**

*Regional Sales Director EMEA*

*Alain.Bouville@dialight.com*

*+33.6.0703.7744*





598 8A SERIES

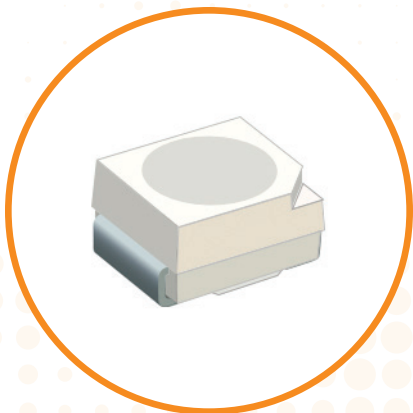
**0402 Low Current**

**Features & benefits**

- Ultra-miniature package
- Ideal for size constraint applications
- Low-current type is perfect for battery-powered equipment
- Ideal for handheld and battery applications
- Viewing angle 140 degrees
- 5 mA
- 4000 pc/reel
- 1.0 x 0.5 x 0.4mm

**Color options**

AllInGAP: ● 635 Red ● 625 Red ● 605 Orange ● 590 Yellow ● 570 Yellow-Green  
InGaN: ● 525 Green ● 470Blue



598 8B SERIES

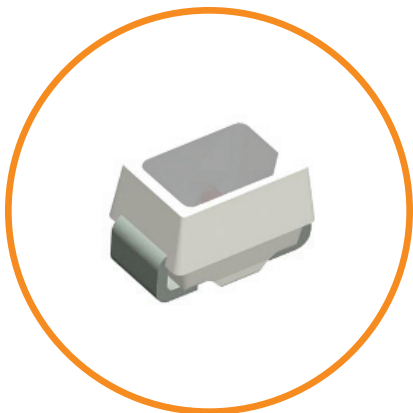
**3528 PLCC-2**

**Features & benefits**

- Industry standard PLCC-2 footprint
- Variety of colors with high luminous intensity
- Viewing angle 120 degrees
- -40 to +85C operating temperature
- 20 mA
- 2000 pc/reel
- 3.5 x 2.8 x 1.9mm

**Color options**

AllInGAP: ● 635 Red ● 625 Red ● 605 Orange ● 590 Yellow ● 570 Yellow-Green  
InGaN: ● 525 Green ● 470Blue



598 8C SERIES

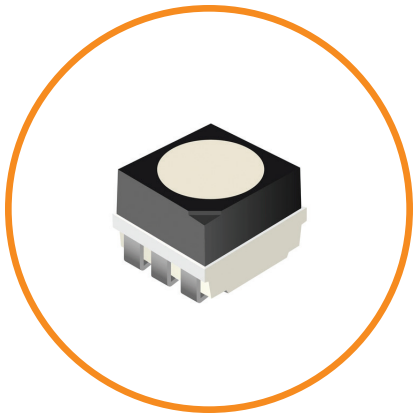
**Mini PLCC-2**

**Features & benefits**

- Smallest PLCC package available
- Variety of colors with high luminous intensity
- Viewing angle 120 degrees
- 5 mA & 20mA
- 3000 pc/reel
- 2.2 x 1.4 x 1.3mm

**Color options**

AllInGAP: ● 635 Red ● 625 Red ● 605 Orange ● 590 Yellow ● 570 Yellow-Green  
InGaN: ● 525 Green ● 470Blue



**598 8F SERIES**  
**598-8F10-313F**  
**3735 PLCC-6**

**Features & benefits**

- Surface non-reflective black appearance
- Compatible with Pb-free reflow soldering process
- High luminous intensity
- Low power consumption
- Good reliability and long life
- RoHS compliant
- -30°C to 85°C operating temperature range
- 20 mA
- 5a moisture sensitivity level
- Viewing angle 120 degrees
- 1000V ESD
- 3.7 × 3.5 × 2.8 mm

**Color options**

- Red
- Green
- Blue



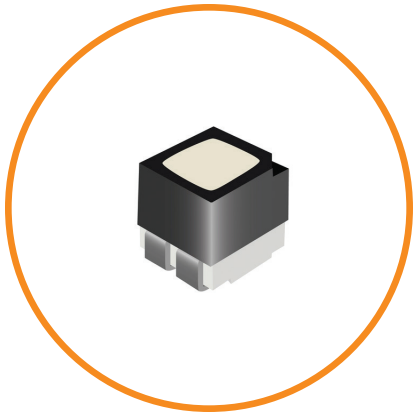
**598 8G SERIES**  
**598-8G10-313F**  
**2827 PLCC-6**

**Features & benefits**

- Surface non-reflective black appearance
- Compatible with Pb-free reflow soldering process
- High luminous intensity
- Low power consumption
- Good reliability and long life
- RoHS compliant
- -30°C to 85°C operating temperature range
- 20 mA
- 5a moisture sensitivity level
- Viewing angle 110 degrees
- 1000V ESD
- 2.8 × 2.7 × 2.45mm

**Color options**

- Red
- Green
- Blue



**598 8H SERIES**  
**598-8H10-313F**  
**1515 PLCC-4**

**Features & benefits**

- Surface non-reflective black appearance
- Compatible with Pb-free reflow soldering process
- High luminous intensity
- Low power consumption
- Good reliability and long life
- RoHS compliant
- -30°C to 85°C operating temperature range
- 20 mA
- 5a moisture sensitivity level
- Viewing angle 110 degrees
- 1000V ESD
- 1.5 × 1.5 × 1.6 mm

**Color options**

- Red
- Green
- Blue



620, 621, 622 & 623 SERIES

**Heavy Duty Panel Mount Indicators**

**Features & benefits**

- Modern, attractive design
- Metal LED indicator for rugged applications
- Wide range of voltages 3V, 6V, 12V, 24V
- Variety of colors and RGB illumination available
- Different terminal options for easy installation
- Durable stainless steel housing
- Designed for indoor / outdoor applications

**Certifications & ratings**

- RoHS compliant • IP66 / IP67 • IK10 • NEMA 4X



556 SERIES

**Constant Intensity Panel Mount Indicators**

**Features & benefits**

- Designed for rugged, outdoor applications in 1" mounting holes
- Combines InGaN and AlInGaP for maximum light output and reliable visibility
- Ensures continuous indication on battery-operated equipment that will not decline as voltage depletes, 18-48V DC operating voltage
- Designed for indoor / outdoor applications

**Certifications & ratings**

- IP66 • RoHS compliant w/ 6C exemption • NEMA 4X • IK07



653, 654 & 655 SERIES

**Snap-In Panel Mount Indicators**

**Features & benefits**

- Low cost solution panel mount LED that allows for mounting to panels with 0.027" to 0.138" thicknesses
- Designed with flexible tabs and wire leads
- Mounting hole sizes: 0.50", 0.579", 0.657"
- Variety of colors and voltage options
- Press fit installation

**Certifications & ratings**

- RoHS compliant



**630 SERIES**

**30mm Panel Mount Indicators**

630-1X0X-304F (Flat lens) / 630-3X0X-304F (Domed lens)

**Features & benefits**

- Largest mounting hole size of 30mm (1.18") available with flat and domed lens
- Highly durable brass housing with white nickel plating designed for indoor / outdoor applications
- Variety of high light output colors including white
- Daylight viewable

**Certifications & ratings**

- UL 1598 (E156890) • IP66 • NEMA 4X
- RoHS compliant w/ 6C exemption • IK07



**677 SERIES**

**7mm High Intensity Panel Mount Indicators**

677-1X2X-3XXF in Black Nickel

**Features & benefits**

- Protruding LED Lens with 7.2mm panel mount hole size
- High brightness LEDs in a variety of colors
- Highly durable brass housing with black nickel plating to provide corrosion resistance
- Maintains excellent electrical conductivity and low reflectivity

**Certifications & ratings**

- RoHS compliant • NEMA 4X (with gasket) • IP66 (with gasket)IK07



**656 SERIES IN 48 VDC**

**High Intensity LED Panel Mount Indicators**

656-1XXA-X0XF

**Features & benefits**

- 12.7mm (0.50") LED panel mount available with voltage option 48V DC
- High luminous intensity LEDs in red, green, and yellow with domed lens and flat lens
- Available with wire leads and blade terminals
- Brass housing available with white nickel plating and black nickel plating
- Daylight viewable

**Certifications & ratings**

- NEMA 4X • UL1598: wire leads — UL listed; terminals — UL recognized
- IP66 / 67 • RoHS compliant w/ 6C exemption



**559 RECTANGLE SERIES**

**Snap-In LED**

0.216 x 0.139" (5.49 x 3.53mm) Mounting Hole

**Features & benefits**

- The only rectangular panel mount indicator
- Simple, press fit installation
- 2mm x 4mm rectangular LED available in a variety of colors including bi-color
- Diffused lens with wide viewing angle
- UL94V-0 rated black housing

**Certifications & ratings**

- RoHS compliant



**657 BI- AND TRI-COLOR SERIES**

**Watertight Series Panel Mount Indicators**

**Features & benefits**

- Flat and domed lens options
- 5 bi-color options and 2 tri-color options available
- Highly durable, watertight polycarbonate housing
- Completely sealed and potted
- 11/16" (17.46mm) mounting hole size
- Voltage options from 10-30 VDC

**Certifications & ratings**

- RoHS compliant • NEMA 4X • IP67



**658 BI- AND TRI-COLOR SERIES**

**Watertight Series Panel Mount Indicators**

**Features & benefits**

- Largest multi-colored mounting size option with 1.00" (25.4mm) mounting hole
- Highly durable, watertight polycarbonate housing
- Completely sealed and potted
- 5 bi-color options and 2 tri-color options available
- Voltage options from 12-30 VDC
- Designed for indoor / outdoor applications
- Domed lens

**Certifications & ratings**

- RoHS compliant • NEMA 4X • IP67



515 SERIES

**3mm & 5mm Vertical Panel Mount**

**Features & benefits**

- Easy to install front panel mounting
- High efficiency
- Variable lengths
- 3 lens shapes
- Can be used with any top view LED



515 SERIES

**5mm Panel Mount Right Angle**

**Features & benefits**

- The flexibility of Dialight Vertical Optopipes for use with top view LEDs
- Front panel mounting
- Variable lengths
- 3 lens shapes

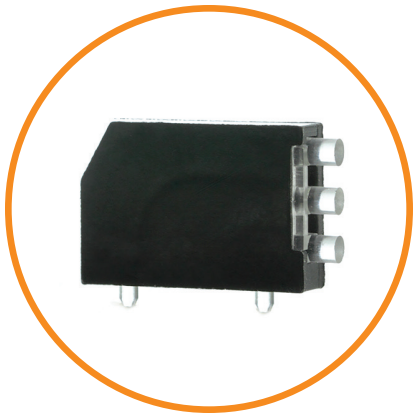


515 SERIES

**1mm, 2mm, 3mm Flush-Mount**

**Features & benefits**

- Our smallest vertical pipe 1mm diameter
- Easy to install
- Tapered output surface for flush recessed mount into a front panel – countersink
- Various lengths .125” to .500”
- Wide variety of mounting sizes



515 SERIES

**Tri-level with Shield**

**Features & benefits**

- Eliminates light bleed
- A fix if smaller chip LEDs are used
- Full enclosed barrier and partial side barrier options available



515 SERIES

**High Density Quad Level Assembly**

**Features & benefits**

- Smallest four high pipe on the market
- Available in multiple lens configurations
- Super compact
- 1,2 or 3 elements top to bottom, or bottom to top
- Integral shielding eliminating light bleed
- Also available with 1, 2 and 3 positions populated



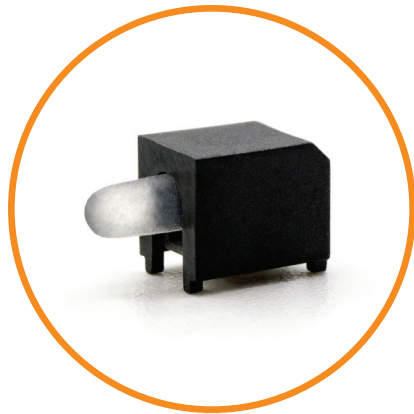
515 SERIES

**XY Variable Length/Height, Right Angle  
515 Series Optopipe® Light Pipes**

3mm Diameter Output

**Features & benefits**

- Lengths varying from .319"-1.772"
- Heights varying from .200"-.500"
- Same board footprint across various heights and lengths
- Easy and secure installation via mounting pins on the housing
- Cost and time savings due to simplified board redesign
- No optical crosstalk, no light bleed
- Offers a high level of ESD protection
- Optical efficiency due to enclosed housing



594 SERIES

**Prism<sup>®</sup> Surface Mount LED**

1.6mm Round Lens, 20 mA and 2 mA

**Features & benefits**

- Compatible with automatic placement equipment
- Packaged in 16mm tape, 7" reel (400 pcs/reel), 13" reel (1600 pcs/reel) and 20 piece strips
- Compatible with surface mount reflow soldering processes
- Housing material meets UL-94V-0 flammability ratings
- Design provides increased indication without increased space
- Packaged in moisture barrier bags for dry packaging per IPC/JEDEC J-STD-033
- Helps eliminate mixed technology PC board processing
- MSL2 for 2 mA, MSL3 for 20 mA



596 SERIES

**Prism<sup>®</sup> Surface Mount LED**

1.6mm Round Lens, 20 mA and 2 mA

**Features & benefits**

- Compatible with automatic placement equipment
- Packaged in 16mm tape, 13" reel (500 pcs/reel) and 10 piece sample strips
- Compatible with surface mount reflow soldering processes
- Housing material meets UL-94V-0 flammability ratings
- Design provides increased indication without increased space
- Helps eliminate mixed technology PC board processing
- Packaged in moisture barrier bags for dry packaging per IPC/JEDEC J-STD-033, MSL2 for 2 mA, MSL3 for 20 mA



521 SERIES

**521-8559F**

**Features & benefits**

- Tri-color red / blue / pure green 5 mm LED
- Common anode and separate cathode leads for each color
- Diffused lens
- 5mm round full-color red/green/blue LED
- 4-leaded type, common anode and separate cathode leads for each color

**Certifications & ratings**

- RoHS compliant



550 SERIES

**550-4013F / 550-4014F**

**Features & benefits**

- Tri-color red / blue / green 4-leaded 5mm housed CBI
- Common anode and separate cathode leads for each color
- Diffused lens
- P/N 550-4013F: protruding lens
- P/N 550-4014F: recessed lens for backlight application

**Certifications & ratings**

- RoHS compliant



551 SERIES

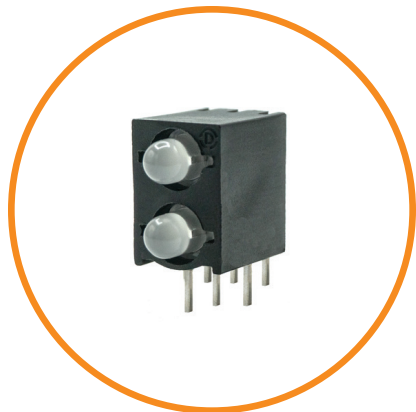
**3mm 3-Leaded Single CBI**

**Features & benefits**

- 551-3513F single CBI
- Bi-color red / green 3mm LED
- White diffused lens

**Certifications & ratings**

- RoHS compliant



553 SERIES

**3mm 3-Leaded Bi-Level CBI**

**Features & benefits**

- 553-3511-600F bi-level CBI
- Bi-color red / green 3 mm LED
- White diffused lens

**Certifications & ratings**

- RoHS compliant

The logo for Dialight features the word "Dialight" in a dark blue, sans-serif font. To the left of the text is a horizontal row of 12 dots of varying sizes and colors, including orange, blue, and grey, which appear to be part of the brand's visual identity.

# Dialight

[www.dialightsignalsandcomponents.com](http://www.dialightsignalsandcomponents.com)

**OE** is **Our** **E**xpertise