

Customer Information Sheet

DRAWING No.: S01-806005KIT

SHEET 2 OF 2

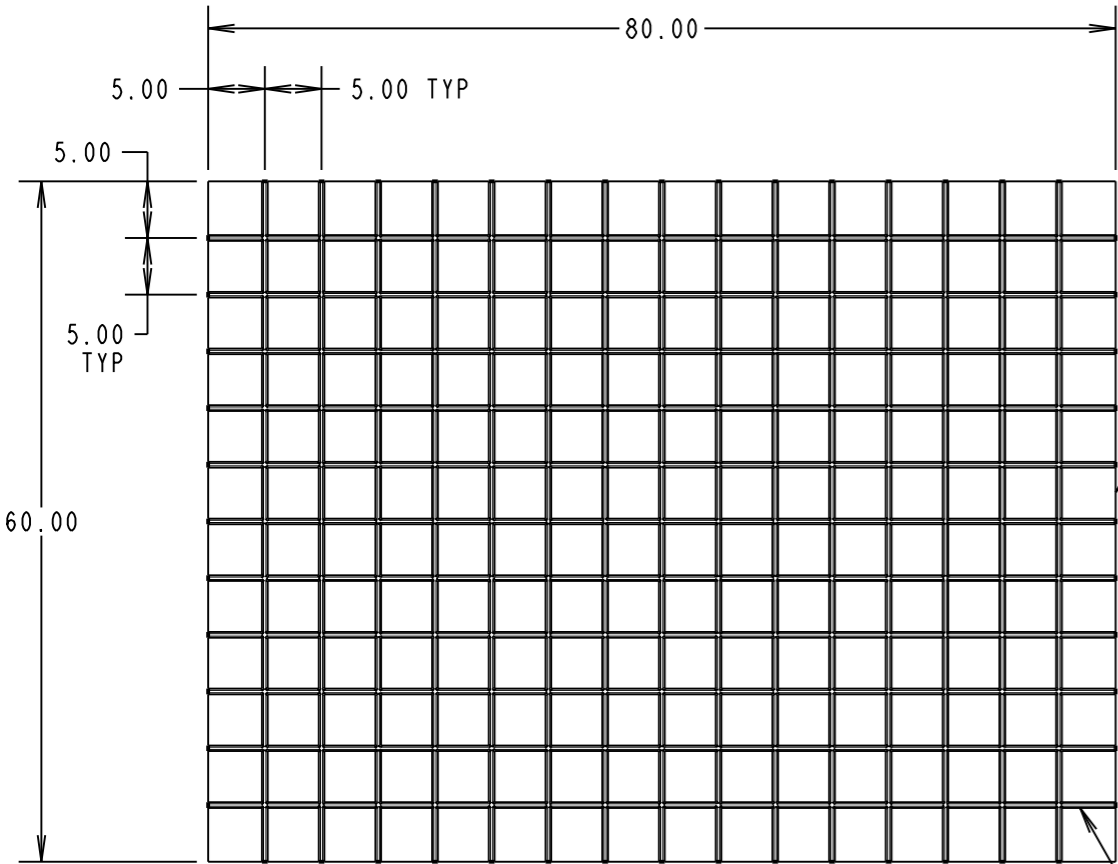
IF IN DOUBT - ASK

©

NOT TO SCALE

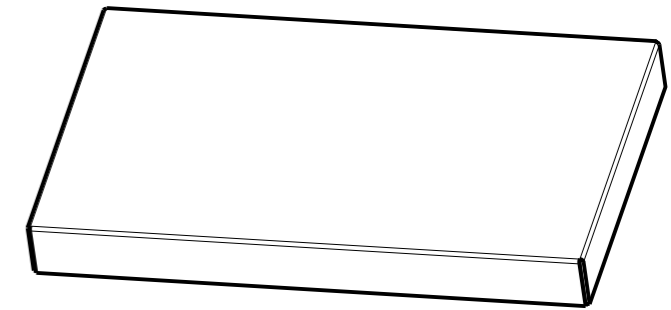
THIRD ANGLE PROJECTION

ALL DIMENSIONS IN mm

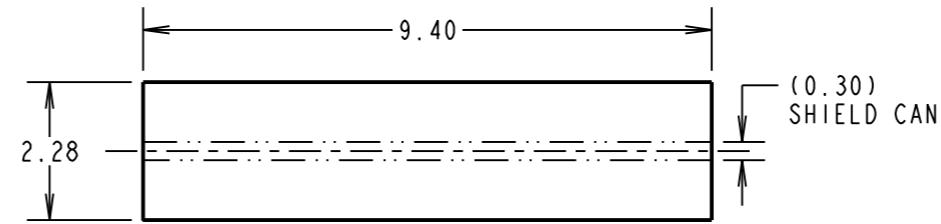
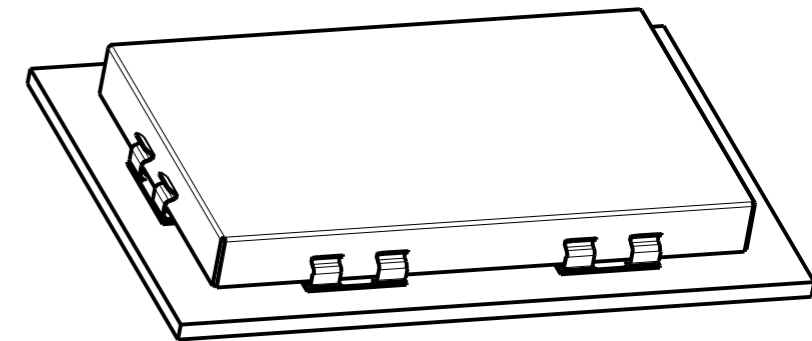


ORDER CODE:
S01-806005KIT

CAN SHEET LENGTH:
CAN SHEET WIDTH:
CAN ETCHING PITCH:



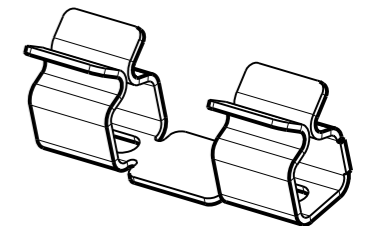
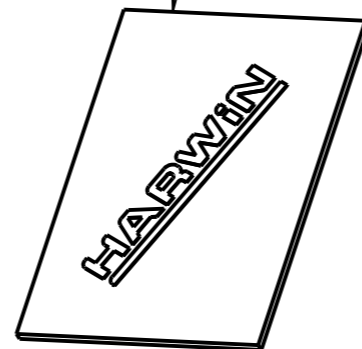
VIEW OF FOLDED CAN FOR ILLUSTRATION ONLY



RECOMMENDED PAD LAYOUT FOR S1711-46R

1/2 ETCHED LINES FOR FOLDING

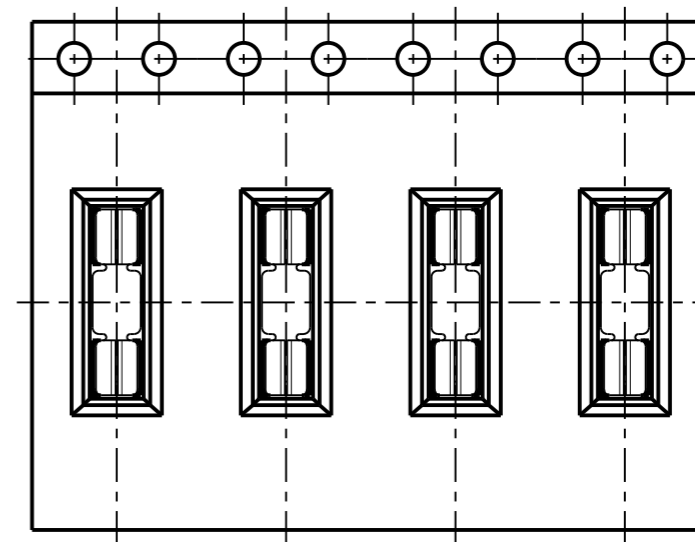
SHIELD CAN KIT INSTRUCTION SHEET



RFI SHIELD CLIPS



NICKEL SILVER, HALF HARD NS106, TO BS1653 0.30mm THICK (UNPLATED)



- NOTES:
- S01-806005KIT IS COMPOSED OF:
 - 1 x Y0905-00: CLEAR HARWIN BOX,
 - 2 x S01-806005SHEET: ETCHED NICKEL SILVER CAN SHEETS,
 - 24 x S1711-46R: RFI SHIELD CLIPS IN STRIPS OF 12,
 - 1 x IS-39: SHIELD CAN KIT INSTRUCTION SHEET.
 - FOR COMPONENT DETAILS OF RFI SHIELD CLIP, SEE DRAWING S1711-46R.

SB	3	19.08.14	12554
NAME	ISS.	DATE	C/NOTE
APPROVED:		S.BENNETT	
CHECKED:		M.PLESTED	
DRAWN:		S.BENNETT	
CUSTOMER REF.:			
ASSEMBLY DRG:			

HARWIN

www.harwin.com
technical@harwin.com

THIS DRAWING AND ANY INFORMATION OR DESCRIPTIVE MATTER SET OUT HEREON ARE CONFIDENTIAL AND COPYRIGHT PROPERTY OF THE HARWIN GROUP AND MUST NOT BE DISCLOSED, LOANED, COPIED OR USED FOR MANUFACTURING, TENDERING OR FOR ANY OTHER PURPOSE WITHOUT THEIR WRITTEN PERMISSION.

TOLERANCES
X. = ±1mm
X.X = ±0.50mm
X.XX = ±0.10mm
X.XXX = ±0.01mm
ANGLES = ±5°
UNLESS STATED

MATERIAL:

SEE ABOVE

FINISH: SEE ABOVE

S/AREA:

mm²

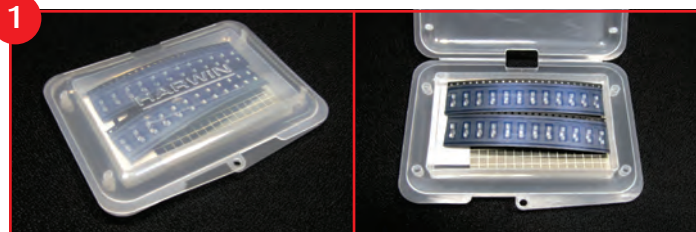
TITLE:

EZ-BOARDWARE SHIELD CAN AND SMT RFI SHIELD CLIP KIT

DRAWING NUMBER:

S01-806005KIT

SHT 2 OF 2



Your Kit contains:

- 2 x Shield Can Sheets
- 24 x RFI Shield Clips
- 1 x Instruction Sheet

Tools required:

- A pair of scissors
- A rule
- A solid, flat work surface

Shield Can Kit

Instruction Sheet

S01-806005KIT



IS-39 Issue: 2 Date: 23/03/2015

