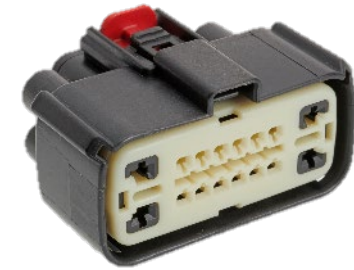


MX150 CONNECTOR SYSTEM

PRODUCT REFRESH

FEBRUARY 2023



creating connections for life

molex

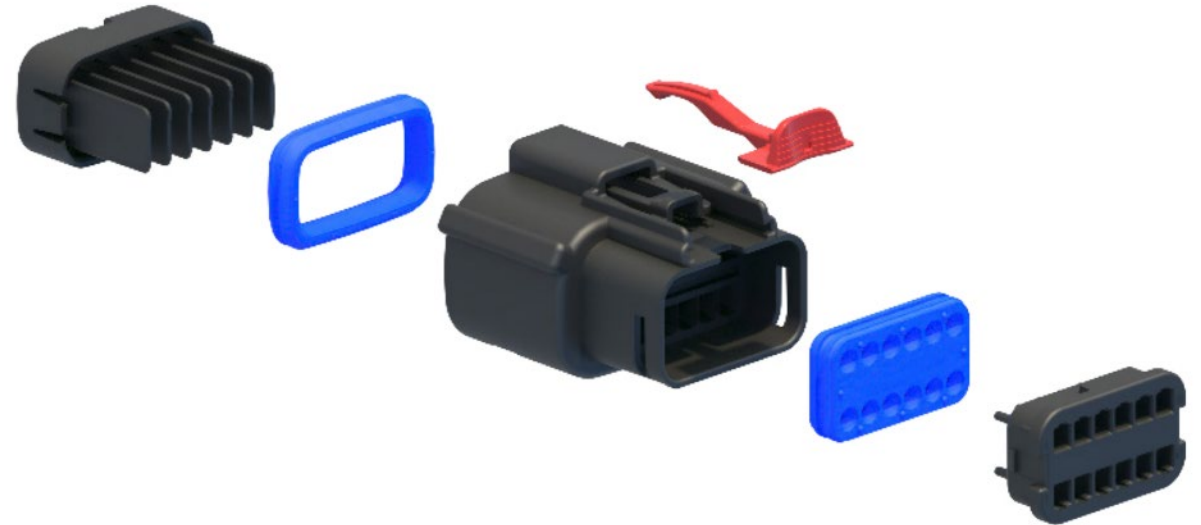
MX150 SEALED AND UNSEALED CONNECTOR SYSTEM

In the Automotive and Commercial Vehicles industries, engineers are continually challenged to provide more electronics in the same space, accommodating faster assembly times to reduce production costs.

The MX150 Connector System offers a reduced package size over traditional USCAR connectors and is designed for simple and secure assembly.

Product Availability

- Wire-to-wire Mat Sealed Systems
- Mat Sealed Compatible Systems
- Wire-to-wire Cable Sealed Systems
- Wire-to-wire Unsealed Systems
- Accessories
 - Terminals
 - Backshells
 - Cavity Plugs



creating connections for life

molex

KEY PRODUCT MESSAGES

Complete System Solution

MX150 offers a complete package solution for 1.50mm connector systems. Designers can choose compatible male and female connectors and terminals that are provided in various plating options to meet specific application needs.



Flexibility & Space Saving

Space and mass savings are more crucial than ever for internal combustion engine (ICE)-powered and battery electric vehicles due to challenging EPA regulations and the need to reduce battery size. MX150 is a product family constantly evolving to offer various circuit sizes and hybrid connector options. As a result, designers benefit from flexibility and space savings.



High-Quality & Reliability

The MX150 product family is a proven and industry-tested offering with excellent warranty performance. In addition, the products offer highly engineered connector housings, sealing technology and position assurance designs that ensure high-quality connections, making MX150 a go-to solution for designers.



MARKETS & APPLICATIONS

Automotive

Automotive vehicles
Commercial vehicles
Industrial vehicles and equipment
Recreational vehicles

Commercial Vehicle

ATVs
Marine: under-dash wiring, lighting
Forklifts

Industrial Automation

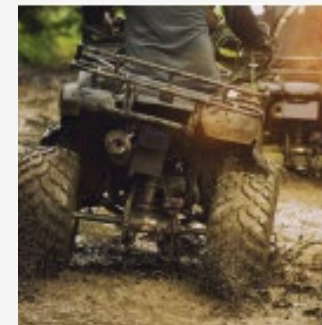
Robotics
Industrial machines and motors



Automotive Vehicles



Robotics



ATVs

PRODUCT FEATURES & ADVANTAGES

Connector position assurance (CPA) option available

Helps to eliminate accidental disconnection between connectors

Preassembled terminal position assurance (TPA) housing

Helps ensure crimped terminal leads are properly locked into connector

Grommet cap

Protects mat seal and helps ensure proper alignment of the terminals

Single- and dual-row V0 versions available

Meet stringent safety requirements

Mat seal technology for MX150 (1.50mm) terminals

Helps eliminate the need for individual cable seals thereby reducing package size

One-piece 3.50mm-pitch housing

Offers a compact connector and helps eliminate cost assembly



Panel Mounts
2x3, 2x6 and 2x10 circuit sizes available.



Twist-Head Sealed
Bulk-head connectors
2x6, 2x4, 2x6, 2x8 circuit sizes available



Headers
R/A headers and unshrouded headers available



PRODUCT AT-A-GLANCE

Sealed Connector System

Circuit Sizes (Single and Double Row)	2, 3, 4, 5, 6, 8k 12, 16, 20
Genders	Male and Female
Polarization Options	Keys: A, B, C, D
Colors	Black, Light Gray, Dark Gray, Stone Gray
Industry Interface	USCAR-2, USCAR-21 and GMW3191
Operating Specifications	Current up to 22A, -40C to 150C
Other Features	Optional clip slot (11.00mm), TPA, CPA and Custom Void Patterns

Hybrid Sealed Connector System

Circuit Sizes	8-way, 9-way, 10-way, 12-way, 16-way
Genders	Male and Female
Polarization Options	Keys: A, B, C, D
Colors	Black, Light Gray, Dark Gray, Stone Gray
Industry Interface	USCAR-2, USCAR-21 and GMW3191
Other Features	Optional clip slot (11.00mm), TPA, CPA and Custom Void Patterns

PRODUCT & APPLICATION MATRIX

Trends

Zonal Architecture
Electrification (EV)
Autonomy

Markets

ICE Vehicles
Electric Vehicle
Commercial Vehicles
Recreational Vehicles
Truck and bus
Agriculture
Lawn and garden
Boats

Transportation Applications

ADAS
Compute clusters
Zonal modules – I/O aggregators
EV charging stations
Battery Management Systems
Safety
Door modules
HVAC
Interior/exterior lighting
Power seat modules
Power steering
Powertrain
Engine control modules
Motor/ transmission ECU



THANK YOU

creating connections for life

molex