

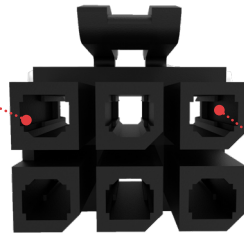
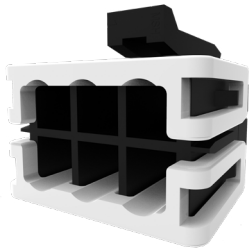
Micro-Fit+ Connector

molex

The Micro-Fit+ connector is a wire-to-board system which offers a 3.00mm pitch, a higher-current rating of 12.5A and superior design options for flexibility and efficient assembly

Features and Advantages

Fully isolated contacts on each side of the interface
Prevents potential arcing



Unique keying design
Prevents mis-mating; different than standard Micro-Fit 3.0

Reduced Mating Force by 40%

Allows for ease of work, reducing operator fatigue during assembly with its unique design compared to standard Micro-Fit 3.0

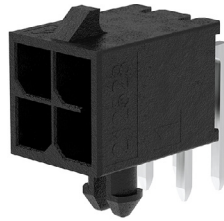
40%



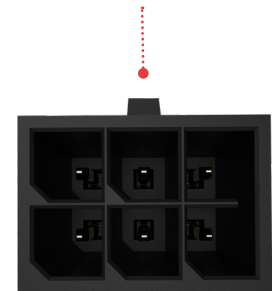
Fully polarized housings

Assures proper mating orientation; not compatible with standard Micro-Fit 3.0 Connectors

Enhanced TPA design
Provides stability and security for the terminals inside the receptacle; offers easy assembly for operators



Reflow options available
Reduces labor costs, saves time and resources



Smaller PCB footprint
Provides design flexibility

V-0/Glow Wire combination resin
Reduces the cost of materials and labor and allows customers to meet the European standard for electrical requirements

Applications

Consumer

- Washers and dryers
- Freezers
- Gaming machines
- Printers
- Refrigerators
- Scanners
- Security systems
- Vending machines
- White goods

Medical

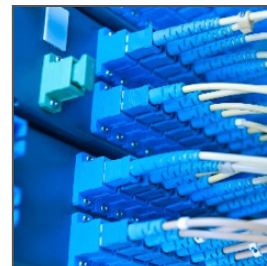
- Diagnostic equipment
- Patient monitors

Sustainable Energy

- Solar power

Automotive

- Harness manufacturers
- Non-sealed applications
- Inside devices
- Charging stations



Routers



Appliances

Telecommunications/Networking

- Routers and switches
- Servers
- Storage



Charging Stations

Specifications

REFERENCE INFORMATION

Packaging: Bag, Tray, Reel
 UL File No.: E29179
 CSA File No.: LR19980
 Mates With:
 Series: 206832 Series: 206461
 Use With:
 Series: 206460 Series: 206461
 Series: 206461 Series: 206462
 Terminal Used:
 Series: 206460
 Designed In: Millimeters
 RoHS: Yes
 Halogen Free: Yes
 Glow Wire Capable: Yes

ELECTRICAL

Voltage (max.): 600V AC (RMS) or DC
 Current (max.): 12.5A
 Contact Resistance: 10 milliohms Maximum
 Dielectric Withstanding Voltage: No breakdown;
 current leakage < 5mA
 Insulation Resistance: 1000 Megohms Minimum

MECHANICAL

Pitch: 3.00mm
 Contact Insertion Force: 14.7N (3.3 lbf)
 Maximum insertion force
 Contact Retention to Housing: 24.5N
 Insertion Force to PCB: 13.7N (3.1 lbf)
 Minimum retention force
 Mating Force: 8N per circuit
 Unmating Force: 3.7N per circuit
 Durability (min.): Mate connectors up to 25 cycles
 at a maximum rate of 10 cycles per minute.

PHYSICAL

Housing: Glass Filled Liquid Crystal Polymer
 Contact: High Copper Alloy
 Plating: Gold(Au) or Tin(Sn) over Nickel overall
 PCB Thickness: Standard 1.57mm
 Operating Temperature: -40 to +105°C

Ordering Information

TERMINALS

Series	Description	AWG
206460	Female Crimp Terminal	16, 18, 20 to 24, 26 to 30

RECEPTACLES

Series	Description	Circuit
206461	Receptacle Housing	2 to 24

HEADERS

Series No.	Description	Orientation	Circuit	Plating
206832	Header Housing	Vertical	2 to 24	Gold(Au) or Tin(Sn) over Nickel overall

TPA

Series	Description	Circuit
206462	TPA	2 to 24

www.molex.com/link/microfitplus.html