

# Conductive Polymer Hybrid Aluminum Electrolytic Capacitors

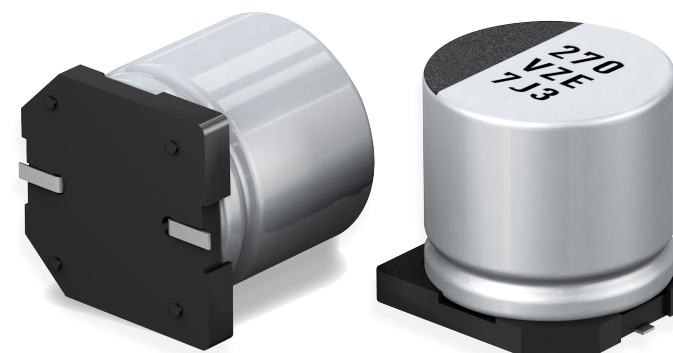
**Panasonic**

ZE series launched to expand the Hybrid Portfolio

## Added Value



- \* High Temperature ( -55 to 145°C)
- \* Same spec as ZC below 125°C
- \* High endurance (85°C / 90% RHS; 135°C - 4.000h; 145°C - 2.000h)
- \* W.V.: 25 to 63V
- \* Capacitance: 33 to 330μF
- \* Case size: Ø 8 x 10.2 to Ø 10 x 10.2



## Capacitance and Voltage Range (ZE series)

Case size, specifications			Rated Voltage			
			25V	35V	50V	63V
Ø 8x10.2	Cap (μF)	20°C	220	150	68	33
	ESR (mΩ)	20°C	27	27	30	40
	Ripple Current	135°C	1600	1600	1250	1100
145°C		700	700	600	600	
Ø10x10.2	Cap (μF)	20°C	330	270	100	56
	ESR (mΩ)	20°C	20	20	28	30
	Ripple Current	135°C	2000	2000	1600	1400
		145°C	900	900	800	800

# Conductive Polymer Hybrid Aluminum Electrolytic Capacitors

**Panasonic**

ZE series launched to expand the Hybrid Portfolio

## Product Line-up of Hybrid Capacitor



	ZA	ZC	ZK	ZE
Endurance	105°C 10,000h	125°C 4,000h	125°C 4,000h	4000h@135°C 2000h@145°C
Rated voltage	25 - 80V DC	25 - 80V DC	25 - 35V DC	25-63V
Rated capacitance	10 - 330μF	10 - 330μF	33 - 470μF	33-330μF
E S R	20 - 120mΩ	20 - 120mΩ	20 - 100mΩ	down to 20mΩ
Ripple current	0.75 - 2.5A (at 105°C)	0.5 - 2A (at 125°C)	0.66 - 2.8A (at 125°C)	
Leakage current	0.01CV			
Damp heat	85°C 85 %RH 2,000h ( 85°C 90 %RH- ZE)			

## Anti-Vibration SMD Capacitors

Specification	
Acceleration	294m/s <sup>2</sup> (30G)
Frequency	5~2000Hz
Amplitude	max. 5mm (peak to peak)
Direction and duration of vibration	The X,Y,Z axis direction for each 2 hours

- Excellent Anti-vibration performance
- Available for all SMD Hybrid & Lytic capacitor series with  $\geq \varnothing 8$  mm



Panasonic Automotive & Industrial Systems Europe GmbH  
[capacitor@eu.panasonic.com](mailto:capacitor@eu.panasonic.com)  
[eu.industrial.panasonic.com](http://eu.industrial.panasonic.com)

For complete and current Panasonic capacitors product information please also visit <https://industrial.panasonic.com>