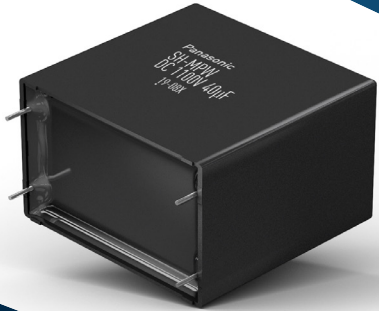


DC Filtering Capacitors EZPV

Panasonic
INDUSTRY



High safety & high reliability with built-in fuse function

Panasonic's original in-house patterned metallization process achieves a very stable capacitance level over the capacitor's lifetime and therefore guarantees a high reliability for your product. The patterns serve as a fuse mechanism function that prevents catastrophic short mode failure. Furthermore, long life time is realized by high temperature & moisture resistance using originally developed exterior material. This series is ideal for inverter circuit, solar inverter & wind power generation and xEV applications.

Key Features

- Rated voltage 600VDC, 800VDC and 1100VDC
- 3 μ F to 110 μ F (\pm 10%)
- -40°C to 105°C
- AEC-Q200 Compliant
- Built-in fuse function
- High thermal shock resistance
- High moisture resistance
- Flame retardant plastic (case and sealing resin)



xEV related application

- Output filtering for DC charging station
- On-board charger
- DC/DC, AC/DC Converters



Industrial

- DC filtering for industrial power supplies
- Inverter circuit in appliance



Renewable energy

- Solar inverter
- Wind power generation



For further Information, please contact capacitor@eu.panasonic.com