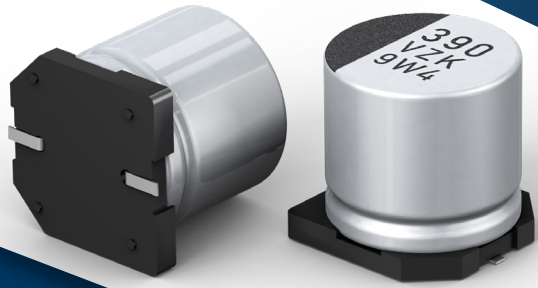


# Conductive Polymer Hybrid Aluminum Electrolytic Capacitors ZKU Series

**Panasonic**  
INDUSTRY



## The industry's largest capacitance\* range (up to 560 $\mu$ F 25V 10x10.2mm)

Hybrid capacitor's ZKU Series is a further step in miniaturization of components, e.g.  $\varnothing$ 10xL10.2mm to  $\varnothing$ 8xL10.2mm at the same capacitance level. In addition to smaller space requirements, ZKU offers a high endurance rating of 4000 hours @ 125°C and large capacitance values of 39 $\mu$ F up to 560 $\mu$ F. The high capacitance characteristics in miniaturized body can reduce the number of required capacitors on the PCB. Adoption of ZKU series in EPS application decreases the PCB area by 25% when compared to other Hybrid capacitors on the market. Being AEC-Q200 compliant ensures optimal quality and reliability.

## Key Features

- Large capacitance, 39 $\mu$ F up to 560 $\mu$ F
- Endurance rating 4000 hours @ 125°C
- Operating temperature -55 to + 125°C
- Rated voltage 25VDC / 35VDC
- Low ESR, down to 20m $\Omega$
- High ripple current, up to 2.8Arms
- AEC-Q200 compliant
- 30g vibration proof types available



### Automotive

- Electrical control unit (ECU)
- DC/DC converter
- E-scooter, E-bike



### Industrial

- Robot
- AC/DC, DC/DC converter
- Control



### Infrastructure & Energy

- Inverter for power generation
- Rectifier for power generation
- Power supply



For further Information, please contact [capacitor@eu.panasonic.com](mailto:capacitor@eu.panasonic.com)