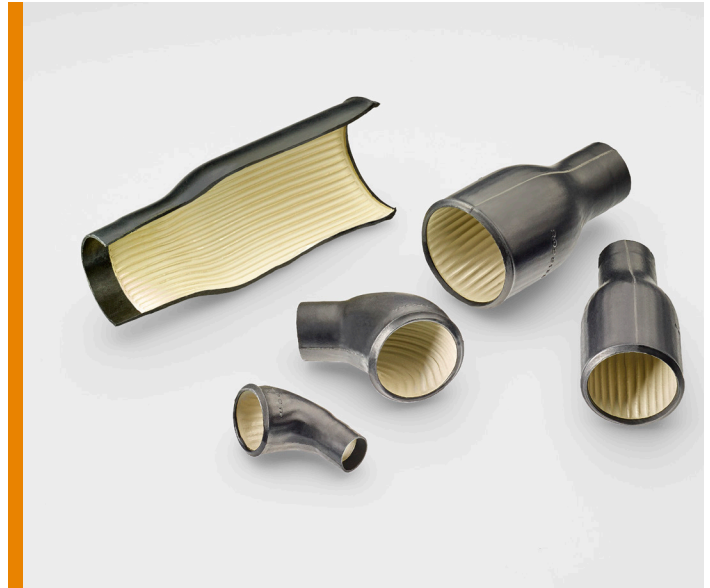


# INTRODUCING INSTALITE MOLDED BOOTS WITH RAYATEN SHIELDING

- **Enhanced EMI performance for EMI continuity from harness braid through the backshell**
- **Versatile boot fits most circular connectors and backshells**



TE Connectivity (TE) now offers the Rayaten family of high performance, rugged, versatile, heat-shrinkable molded parts, that offer lightweight screening capability of 70 dB of attenuation up to 1 GHz. When looking for high reliability, excellent strain relief and enhanced EMI performance in a small, rugged, environmentally sealed product, you can count on the Rayaten family of molded parts.

Rayaten molded parts are available in standard -25 (System 25) compound, and -100 (System 100) Zero Halogen, low fire hazard compound.

## KEY BENEFITS

- **VERSATILE**
  - Fits most circular connectors and backshells
  - Approximately 2:1 shrink ratio
  - Straight, right-angled, and transitional shapes
- **RUGGED**
  - Abrasion resistant
  - Resists most common military fuels, oils, and greases
- **ENHANCED EMI PERFORMANCE**
  - 70 dB of attenuation up to 1 GHz
  - EMI continuity from harness build through backshell

## LEARN MORE

[Landing Page](#)

[Family Brochure](#)

[Rayaten Parts List](#)

## APPLICATIONS

- Military Ground Vehicles
- Missile and Missile Launchers
- Naval Shipboard
- Flight Control Systems

## ELECTRICAL

- Boots: 3kHz-30 MHz 75 dB min >30 MHz-100 MHz 70 dB min.
- Transitions: 3 kHz-100 MHz 65 dB min.

## CONTINUOUS OPERATING TEMPERATURE

- -75°C to +150°C (System 25)
- -30°C to +105°C (System 100)

## MATERIALS

- -25 (System 25) Standard
- -100 (System 100) Zero Halogen

## STANDARDS & SPECIFICATIONS

- RW-3046 (-100C)
- RW-3047 (-25C)