



USB TYPE-C CONNECTOR

Mid-Mount Hybrid Receptacle

One Connector Solution for Data, Power and A/V

- Deliver data up to 10 Gbps, power up to 100W (at 20V) and audio/video (A/V) through a single connector
- Easily backwards compatible to other USB connectors using a converter cable or adapter

Easy, Reliable Mating

- Features a reversible mating interface so the plug can be mated correctly the first time, every time

High Speed Data Transfer

- Supports USB 2.0 (480 Mbps), USB 3.1 Gen 1 (5 Gbps) and USB 3.1 Gen 2 (10 Gbps)

Industry Leading EMI Performance

- TE Connectivity (TE) provides distinctive EMI design on the back of the receptacle shell to help eliminate unwanted EMI leakage and provide enhanced performance over similar legacy products

Ruggedized Design

- TE offers additional board retention features to provide enhanced performance in harsh environments

USB Type-C Connector

Mid-Mount Hybrid Receptacle

USB Type-C connector is the next-generation solution for current and future USB applications.

This connector is designed to an industry standard that provides a slim profile small enough for handheld devices yet robust enough for industrial applications. Featuring a reversible mating interface, the receptacle is designed to accept a plug in any direction, enabling easy, reliable mating. This connector supports a variety of different protocols, and with the use of adapters it is backwards compatible to HDMI, VGA, DisplayPort and other types of connections from the single USB Type-C port.

Applications

- Factory automation
- Industrial machinery
- Data centers
- Medical devices
- A/V digital switches
- Power packs and chargers
- Automotive infotainment
- Business equipment
- Lighting
- Tablets
- PCs and laptops
- Wearables
- Smart phones



Part Number Information

Description	TE Part Number
USB3.1 TYPE-C REC MID-MOUNT 0.485 HYBRID	2129691-1

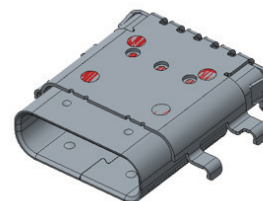
te.com/products/USBTypeC

TE Connectivity, TE, TE Connectivity (logo) and Every Connection Counts are trademarks. All other logos, products and/or company names referred to herein might be trademarks of their respective owners.

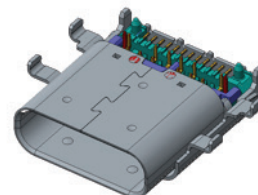
The information given herein, including drawings, illustrations and schematics which are intended for illustration purposes only, is believed to be reliable. However, TE Connectivity makes no warranties as to its accuracy or completeness and disclaims any liability in connection with its use. TE Connectivity's obligations shall only be as set forth in TE Connectivity's Standard Terms and Conditions of Sale for this product and in no case will TE Connectivity be liable for any incidental, indirect or consequential damages arising out of the sale, resale, use or misuse of the product. Users of TE Connectivity products should make their own evaluation to determine the suitability of each such product for the specific application.

©2015 TE Connectivity Ltd. family of companies. All Rights Reserved.

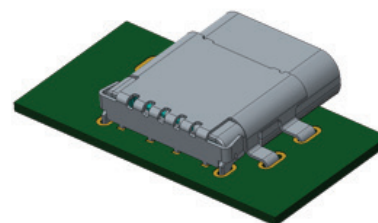
1-1773868-8 10/15 DND



Top of Receptacle



Bottom of Receptacle



Back of Receptacle

Materials

- Contact: Copper alloy
- Housing: Thermo plastic, UL 94 V-0
- Shell: stainless steel

Ratings

- Voltage rating: 30V max.
- Current rating:
 - VBUS pins: 5A max, GND pins: 6.25A
 - VCONN pins: 1.25A max.
 - Signal pins contact: 0.25A min.
- Temperature rating: -30°C to 85°C

Specifications

- Product spec: 108-99061