

WIDE BANDWIDTH ACCELEROMETERS FOR CONDITION MONITORING



Machine condition monitoring and predictive maintenance relies upon early detection of changes in the vibration spectrum that are indicative of defects or wear. As market trends lead toward the monitoring of higher-volume and smaller systems, the signal bandwidth of interest also increases. It is now also possible to embed accelerometers directly into equipment for condition monitoring. This white paper will illustrate the requirement of wide bandwidth monitoring with a discussion of possible sources along with both simulation and experimental results of defect conditions.

Most machinery that is driven by large electric motors will have an input drive running at a speed of between 900 and 3600 rpm (15 to 60 Hz). This fundamental frequency can easily be monitored using accelerometers with relatively low bandwidth, but the information that this signal yields may be limited to imbalance condition only.

Rolling-element bearings are a common cause of machine failure. As bearing defects begin to occur, the vibration level produced in the early stages of failure may be very low and could be masked by vibration from other sources. Frequency-domain analysis is very useful for revealing small signals that may be hidden in the time-domain. Bearing characteristic frequencies are generally many times higher than the running speed (around 50% of the number of balls times the running speed) and may be present even when equipment is in good condition. Bearing defects tend to be impulsive, which produces a series of harmonics spaced at the characteristic frequency, extending to very high frequencies.

Gears represent another case where high multiples of running speed/frequency will be generated, although gearboxes can be significantly more complex to

analyze. The basic gear-mesh frequency is given by the product of the number of teeth and the running speed in Hz. The magnitude of sidebands or harmonics of this frequency can indicate the onset or severity of various defects. Gears will also possess their own natural frequencies, which may be excited by impulsive defects or by strong vibration at higher frequencies.

Blades and vanes again generate vibration at a multiple of running speed, even when in good condition. The blade passing frequency is given by number of blades times the running speed. A missing blade will generate a large number of harmonics of the blade-pass frequency (as well as increasing imbalance at 1 x running frequency).

Mechanical looseness is also very likely to cause many harmonics of running speed to appear in the spectrum. In general terms, looseness can cause discontinuities in motion, and sudden changes in position or displacement can produce very high levels of acceleration.

WIDE BANDWIDTH SIMULATIONS

To illustrate the general nature of mechanical discontinuities, a numerical simulation is presented below. Part of a mechanism is assumed to displace nominally ± 5 mm at a frequency of 50 Hz. To create a simulated discontinuity, we clip the displacement, on positive excursions only, at 4.98 mm, as highlighted in the zoomed trace at right:

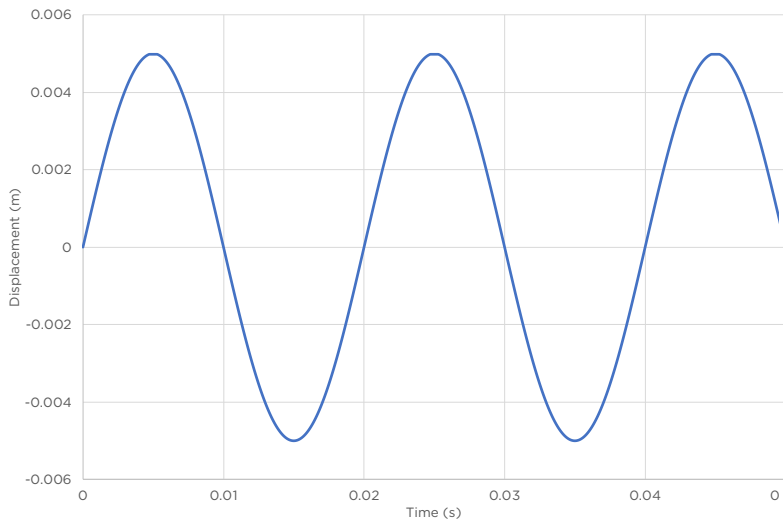


FIGURE 1. DISPLACEMENT CURVE WITH CLIPPING

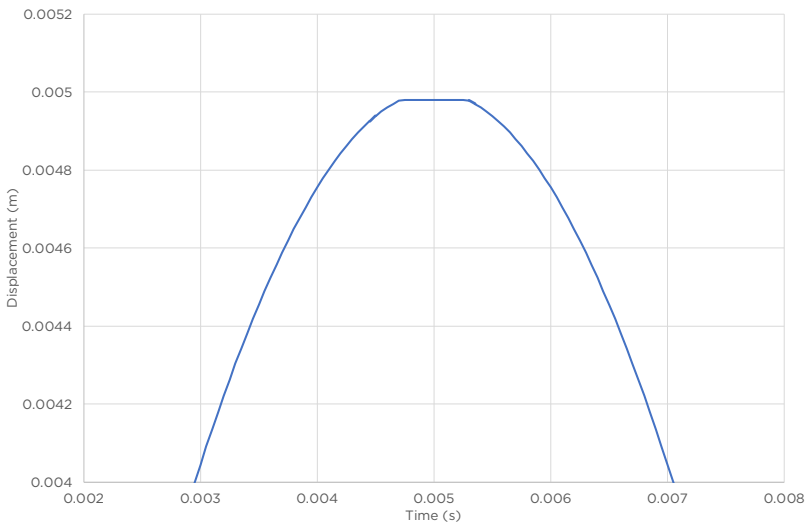


FIGURE 2. ZOOMED REGION OF DISPLACEMENT CURVE WITH CLIPPING

WIDE BANDWIDTH ACCELEROMETERS FOR CONDITION MONITORING

The corresponding acceleration plot shows the underlying sinusoidal acceleration component at ± 50.3 g but with impulses generated by the start and end of mechanical clipping (with -237 g peaks):

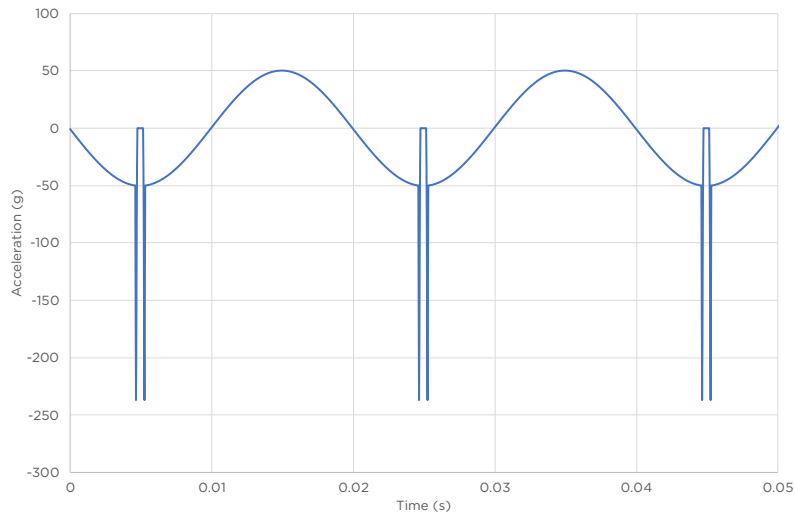


FIGURE 3. ACCELERATION CURVE CORRESPONDING TO CLIPPED DISPLACEMENT CURVE

Now, the corresponding FFT result, first with full bandwidth, then a zoom of first 2 kHz:

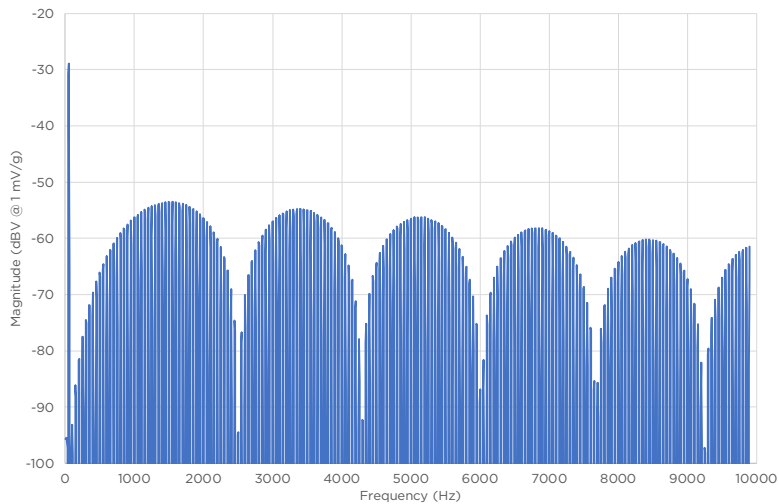


FIGURE 4. FFT RESULT AT FULL BANDWIDTH

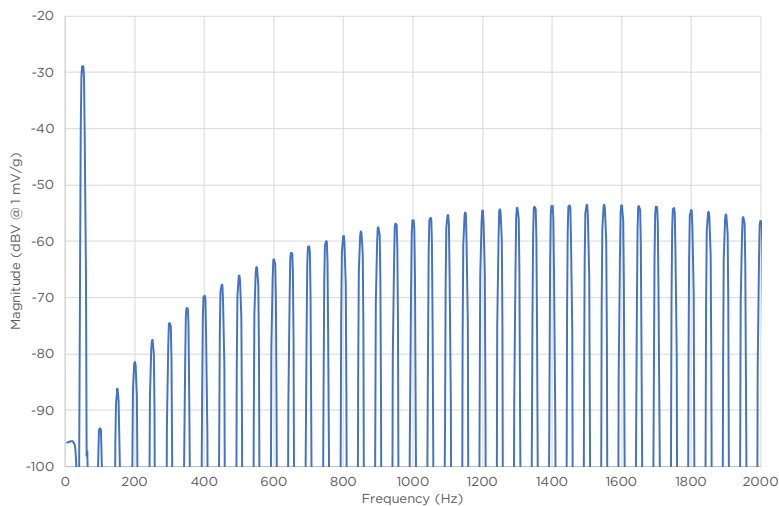


FIGURE 5. ZOOMED FFT SHOWING HARMONIC STRUCTURE

WIDE BANDWIDTH ACCELEROMETERS FOR CONDITION MONITORING

The 0.020 mm “defect” has introduced significant signal energy over a very wide bandwidth, as a series of closely-spaced harmonics of the running speed. In this simulation, the magnitude at 10 kHz is only a few dB below the level around 1500 Hz, and signal energy would continue out well beyond 10 kHz.

Now, what happens if we limit the bandwidth of the sensing device (accelerometer)? In the simulation below, a digital low-pass filter at 5 kHz was applied to the same data:

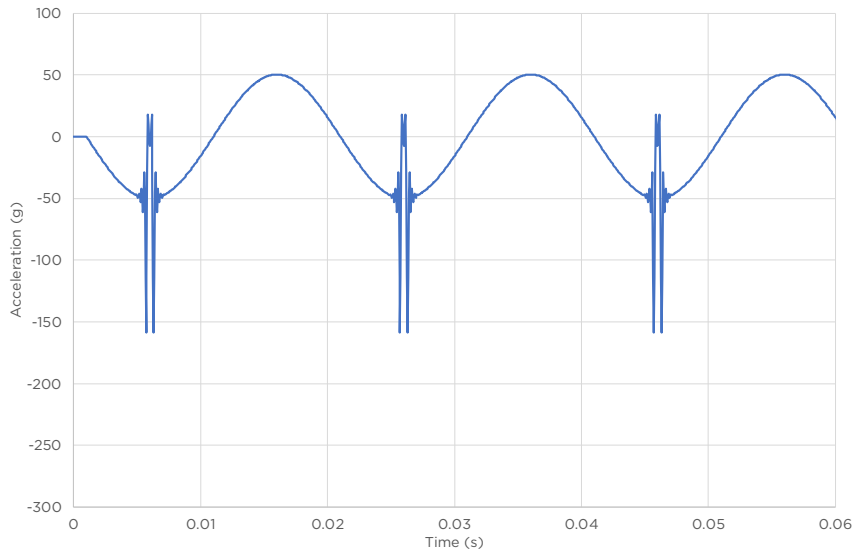


FIGURE 6. ACCELERATION RESULT WITH LIMITED BANDWIDTH

In this case, instead of the negative-going peaks reaching -237 g, the bandwidth restriction has reduced these to -158 g (a drop of one-third).

Although this numerical simulation is not intended to represent any specific real-world case, the general principles are valid: abrupt mechanical discontinuities in motion cause short acceleration impulses. The impulses produce broad-bandwidth energy in the spectrum, and a sensor which is limited in bandwidth will not capture the full extent of the transient events.

Even very large, slowly-rotating structures (such as wind turbines) may be coupled to gear sets with multiple stages and very high tooth count. Signal energy above 10 kHz is considered useful for early detection of defects, as it can be well clear of lower-order vibration at higher amplitude levels which may be present in normal running conditions.

Individual events which create fracture or spalling can release energy over a very wide bandwidth (dynamic strain measurements have shown ultrasonic energy out to 1 MHz). Although conventional accelerometers cannot be expected to capture such a wide bandwidth, audio-band signals may indicate some likelihood of damage.

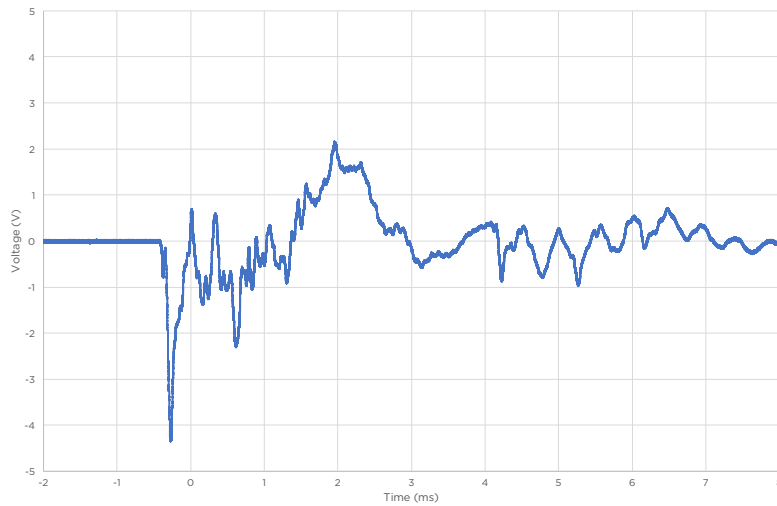


FIGURE 7. TIME TRACE METAL TO GLASS IMPACT WITHOUT FRACTURE

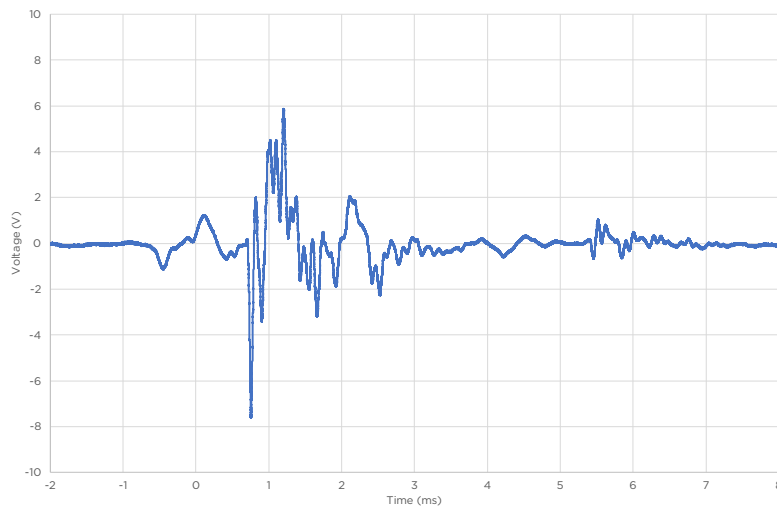


FIGURE 8. TIME TRACE METAL TO GLASS IMPACT WITH FRACTURE

Two time traces are shown above, on the left is a hard metal-to-glass impact which caused no visible damage; on the right, a metal-to-glass impact which caused limited local spalling of the glass (in an area less than 1 mm diameter). Their spectra are overlaid below.

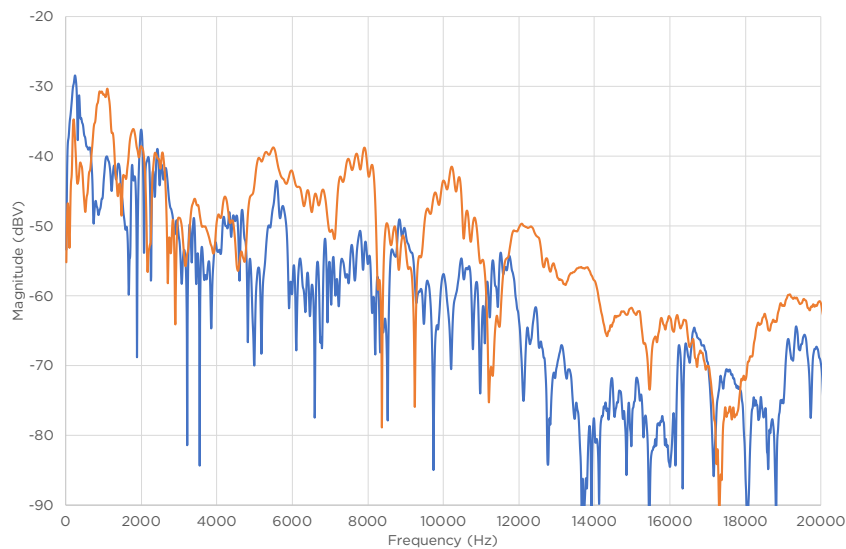


FIGURE 9. FFT COMPARISON WITH AND WITHOUT FRACTURE

WIDE BANDWIDTH ACCELEROMETERS FOR CONDITION MONITORING

The blue curve is impact with no spalling, orange is with spalling. There is good separation generally in the range 5 kHz to 15 kHz, and particularly from 12 - 15 kHz.

While these are transient (time-limited) events with relatively high energies, we may consider some forms of machine wear to be a continuous series of microscopic spalling events. Piezoelectric accelerometers, offering excellent resolution over very wide bandwidth, are a suitable approach to early detection of high-frequency noise associated with machine wear.

ACCELEROMETER TECHNOLOGY COMPARISON

In a capacitive MEMS accelerometer, the inertial movement of one array of fingers relative to a fixed array is sensed by measuring change in capacitance between the arrays. This is usually done by allowing the change in capacitance to modify a frequency, well above the intended detection bandwidth, which can then be demodulated to obtain a final analog output. Since the device is constantly excited, the power consumption is generally significantly higher than that of a piezoelectric device. Until relatively recently, capacitive MEMS devices have been limited to low-frequency operation, although there is a current trend towards higher-bandwidth devices.

In comparison with MEMS technology, piezoelectric accelerometers can achieve significantly higher bandwidth and superior noise performance (signal resolution). The sensing element is typically piezoelectric ceramic material (or "crystal") loaded in shear by an inertial mass. Due to the high stiffness and high charge sensitivity of the crystal and the relatively low mass required to achieve typical detection ranges for condition monitoring, the resonance frequency will be minimum >30 kHz, with some designs >50kHz. This allows the passband to extend well beyond 10 kHz. The piezoelectric sensing element itself requires no power, and signal conditioning (charge to voltage conversion) can be provided within a device with very low current requirement.

TE CONNECTIVITY WIDE BANDWIDTH ACCELEROMETERS

Packaged Industrial Accelerometers

Model	Acceleration Range	Frequency Response	Number of Axes
8021	±10 g to ±500 g	0.5 - 15000 Hz (±3 dB)	Single Axis
8711	±5 g to ±500 g	0.3 - 18000 Hz (±3 dB)	Single Axis
8911	±25 g to ±500 g	2 - 15000 Hz (±3 dB)	Wireless

Embedded OEM Accelerometers

Model	Acceleration Range	Frequency Response	Number of Axes
820M1	±25 g to ±500 g	2 - 15000 Hz (±3 dB)	Single Axis
830M1	±25 g to ±500 g	2 - 15000 Hz (±3 dB)	Triaxial

ABOUT TE CONNECTIVITY

TE Connectivity is a \$12 billion global industrial technology leader creating a safer, sustainable, productive and connected future. Our broad range of connectivity and sensor solutions, proven in the harshest environments, enable advancements in transportation, industrial applications, medical technology, energy, data communications and the home. With approximately 80,000 employees, including more than 7,500 engineers, working alongside customers in approximately 140 countries, TE ensures that EVERY CONNECTION COUNTS. Learn more at www.te.com.

AUTHOR

Richard Brown, Field Application Engineer, TE Connectivity

CONNECT WITH US

We make it easy to connect with our experts and are ready to provide all the support you need. Visit www.te.com/support to chat with a Product Information Specialist.

NORTH AMERICA

Tel: +1 800 522 6752

EUROPE

Tel: +31 73 624 6999

ASIA

Tel: +86 0400 820 6015

te.com/sensors

TE Connectivity, TE, TE Connectivity (logo) and EVERY CONNECTION COUNTS are trademarks. All other logos, products and/or company names referred to herein might be trademarks of their respective owners

The information given herein, including drawings, illustrations and schematics which are intended for illustration purposes only, is believed to be reliable. However, TE Connectivity makes no warranties as to its accuracy or completeness and disclaims any liability in connection with its use. TE Connectivity's obligations shall only be as set forth in TE Connectivity's Standard Terms and Conditions of Sale for this product and in no case will TE Connectivity be liable for any incidental, indirect or consequential damages arising out of the sale, resale, use or misuse of the product. Users of TE Connectivity products should make their own evaluation to determine the suitability of each such product for the specific application.

© 2021 TE Connectivity Corporation. All Rights Reserved.

01/2021