

Product Change Notification

PCN26-3-K12S - Internal design improvements
and relocation of rubber boot assembly operation

C&K

2 rue Berthollet - B.P. 359 F-39105 Dole Cedex - France
Tel : +33 (0)3 84 72 81 12 www.ckswitches.com

Document subject to change without prior notice

PCN26-3-K12S - Internal design improvements and relocation of rubber boot assembly operation

Document revision

Revision	Date	Description	Author
A	February 6th, 2026	Creation	R.Clement

C&K

2 rue Berthollet - B.P. 359 F-39105 Dole Cedex - France
Tel : +33 (0)3 84 72 81 12 www.ckswitches.com

Document subject to change without prior notice

PCN26-3-K12S - Internal design improvements and relocation of rubber boot assembly operation

Summary

1. Purpose.....	4
2. Overview	4
3. Impact of Change and Qualification.....	6
4. Part numbers affected	6
5. Date of application	10
6. Conditions of application.....	10
7. Acknowledgement.....	10
8. Support	10

C&K

2 rue Berthollet - B.P. 359 F-39105 Dole Cedex - France
Tel :+33 (0)3 84 72 81 12 www.ckswitches.com

Document subject to change without prior notice

PCN26-3-K12S - Internal design improvements and relocation of rubber boot assembly operation

1. Purpose

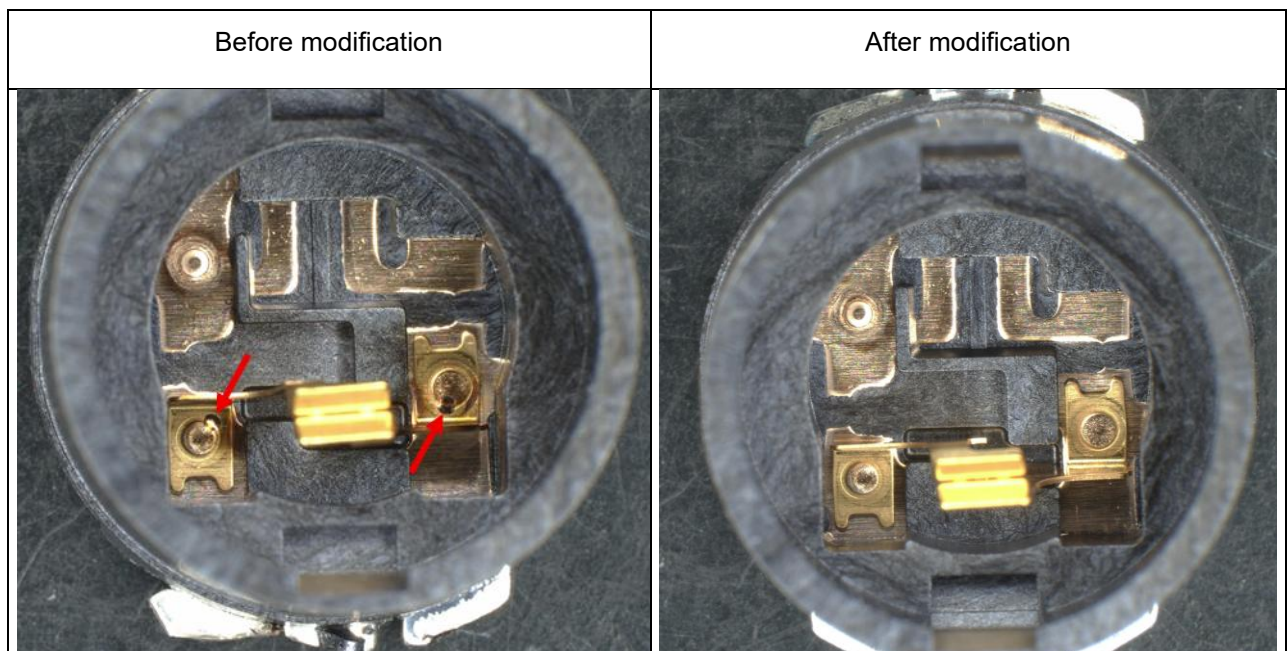
C&K, as design and manufacturing company for switches and assemblies, is constantly looking to improve the manufacturing means and processes, in order to continue serving its customers with the highest performance level.

In this context, C&K is implementing the following improvements:

- Removal of the laser welding point for the Mobile Contact
- Widening of the landing pads for the LED soldering areas and change of solder paste type
- Relocation of the rubber boot assembly operation

2. Overview

2.1 Removal of the Contact Mobile laser soldering point



- Pull-out resistance: reduced dispersion and higher average values in the absence of laser welding: +7%
- Contact force: higher average values in the absence of laser welding: +14%
- Twisting resistance (anti-rotation): higher measured values in the absence of laser welding: +16%

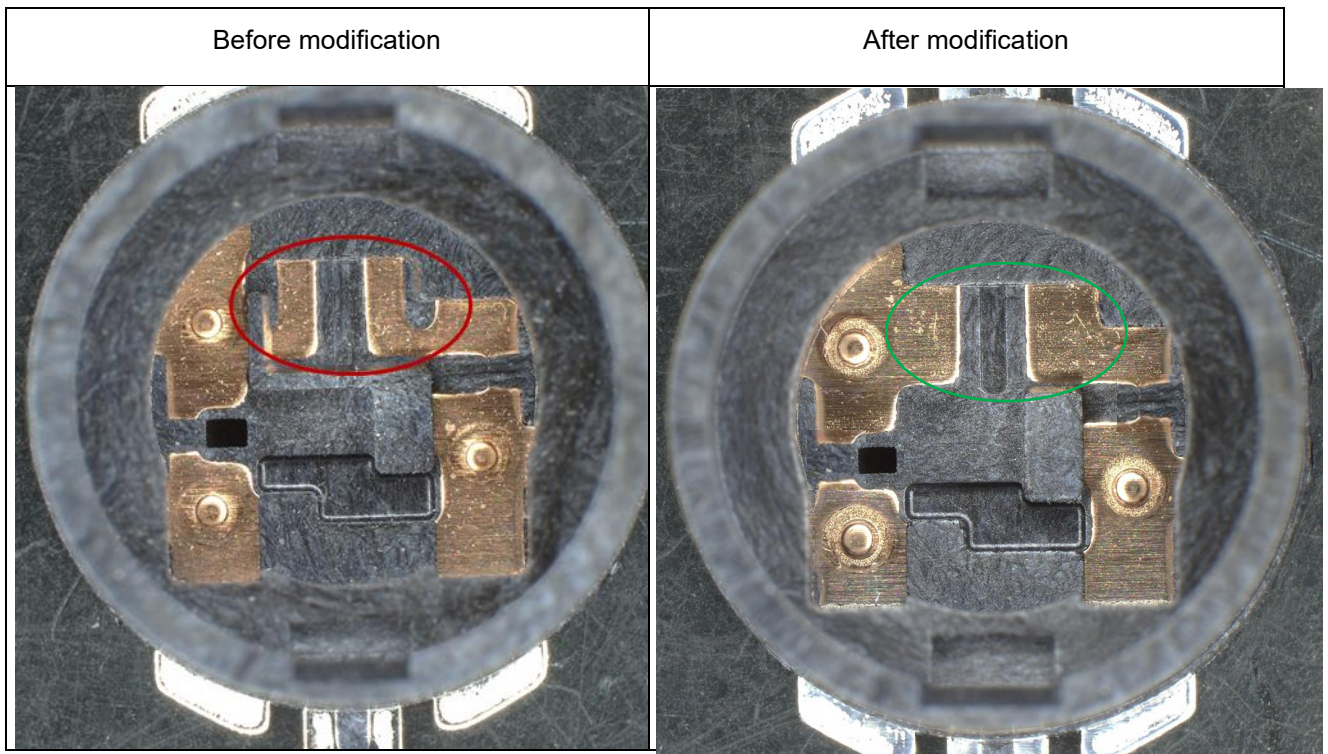
C&K

2 rue Berthollet - B.P. 359 F-39105 Dole Cedex - France
Tel : +33 (0)3 84 72 81 12 www.ckswitches.com

Document subject to change without prior notice

PCN26-3-K12S - Internal design improvements and relocation of rubber boot assembly operation

2.2 Widening of the landing pads for the LED soldering areas and change of solder paste type



- Landing pads have been increased by 50% approximately and implementation of a solder flux retention trap.
- Solder paste type T3 has been replaced by type T6. The key distinction between T3 and T6 lies in the particle size of the solder powder. The significantly smaller particles in T6 paste greatly enhance process behavior, and overall soldering quality.

2.3 Relocation of the rubber boot assembly operation

Relocation from Poland to Morocco with change of sub-supplier.

The rubber boot assembly is the final manufacturing step, consisting of fitting the sealing rubber boot onto the switch.

Both the switch and the rubber boot will continue to be sourced from the same equipment; only the assembly operation is being relocated.

3. Impact of Change and Qualification

3.1 Impact of Change:

The internal design modifications of the product and the relocation does not impact the switch's performance or integration, and therefore the existing K12S specifications remain fully applicable.

3.2 Qualification method:

Most of the tests has been completed, the complete qualification report will be available on April 1st.

Test reports will be available upon request at that time.

4. Part numbers affected

All item descriptions contain "**K12S**" are affected by this notification.

Only "**K12S with LED illumination**" versions are affected by the widening of the landing pads and change of solder paste type.

Only "**IP6X and IP67**" versions are affected by the relocation of the rubber boot assembly operation

Material N°	Description
Y54A1C130AM0XFP	K12SA L AM0 1.5 3N C LFTX
Y54A1C130GN0XFP	K12SA L GN0 1.5 3N C LFTX
Y54A1C130OR0XFP	K12SA L OR0 1.5 3N C LFTX
Y54A1C130RD0XFP	K12SA L RD0 1.5 3N C LFTX
Y54A1C130WH0XFP	K12SA L WH0 1.5 3N C LFTX
Y54A1C130YE0XFP	K12SA L YE0 1.5 3N C LFTX
Y54A1C130000XFP	K12SA S 1.5 3N C LFTX
Y54A101C1AM0XFP	K12SA L AM0 1.5 12N O LFTX
Y54A101C1RD0XFP	K12SA L RD0 1.5 12N O LFTX
Y54A101C1000XFP	K12SA S 1.5 12N O LFTX
Y54A10130AM0XFP	K12SA L AM0 1.5 3N O LFTX
Y54A10130GN0XFP	K12SA L GN0 1.5 3N O LFTX
Y54A10130OR0XFP	K12SA L OR0 1.5 3N O LFTX
Y54A10130RD0XFP	K12SA L RD0 1.5 3N O LFTX
Y54A10130WH0XFP	K12SA L WH0 1.5 3N O LFTX
Y54A10130YE0XFP	K12SA L YE0 1.5 3N O LFTX
Y54A10130000XFP	K12SA S 1.5 3N O LFTX
Y54A10151AM0XFP	K12SA L AM0 1.5 5N O LFTX
Y54A10151GN0XFP	K12SA L GN0 1.5 5N O LFTX
Y54A10151OR0XFP	K12SA L OR0 1.5 5N O LFTX
Y54A10151RD0XFP	K12SA L RD0 1.5 5N O LFTX
Y54A10151WH0XFP	K12SA L WH0 1.5 5N O LFTX
Y54A10151YE0XFP	K12SA L YE0 1.5 5N O LFTX
Y54A10151000XFP	K12SA S 1.5 5N O LFTX
Y54A10161AM0XFP	K12SA L AM0 1.5 6N O LFTX
Y54A10161GN0XFP	K12SA L GN0 1.5 6N O LFTX
Y54A10161OR0XFP	K12SA L OR0 1.5 6N O LFTX
Y54A10161RD0XFP	K12SA L RD0 1.5 6N O LFTX
Y54A10161WH0XFP	K12SA L WH0 1.5 6N O LFTX
Y54A10161YE0XFP	K12SA L YE0 1.5 6N O LFTX
Y54A10161000XFP	K12SA S 1.5 6N O LFTX
Y54A10191AM0XFP	K12SA L AM0 1.5 9N O LFTX
Y54A10191GN0XFP	K12SA L GN0 1.5 9N O LFTX
Y54A10191OR0XFP	K12SA L OR0 1.5 9N O LFTX
Y54A10191RD0XFP	K12SA L RD0 1.5 9N O LFTX
Y54A10191WH0XFP	K12SA L WH0 1.5 9N O LFTX
Y54A10191YE0XFP	K12SA L YE0 1.5 9N O LFTX
Y54A10191000XFP	K12SA S 1.5 9N O LFTX
Y54A2C130000XFP	K12SA D 1.5 3N CC LFTX
Y54A2C151000XFP	K12SA D 1.5 5N CC LFTX
Y54A201C1000XFP	K12SA D 1.5 12N OO LFTX
Y54A20130000XFP	K12SA D 1.5 3N OO LFTX
Y54A20151000XFP	K12SA D 1.5 5N OO LFTX
Y54A20161000XFP	K12SA D 1.5 6N OO LFTX
Y54A20191000XFP	K12SA D 1.5 9N OO LFTX
Y54A20341481XFP	K12SA D 1.5 4/8N OO LFTX
Y54A203614C1XFP	K12SA D 1.5 6/12N OO LFTX

Material N°	Description
Y54B0C191000XFP	K12SB D 1.5 9N OC LFTX
Y54B1C130AM0XFP	K12SB L AM0 1.5 3N C LFTX
Y54B1C130GN0XFP	K12SB L GN0 1.5 3N C LFTX
Y54B1C130OR0XFP	K12SB L OR0 1.5 3N C LFTX
Y54B1C130RD0XFP	K12SB L RD0 1.5 3N C LFTX
Y54B1C130WH0XFP	K12SB L WH0 1.5 3N C LFTX
Y54B1C130YE0XFP	K12SB L YE0 1.5 3N C LFTX
Y54B1C130000XFP	K12SB S 1.5 3N C LFTX
Y54B1C191000XFP	K12SB S 1.5 9N C LFTX
Y54B101C1AM0XFP	K12SB L AM0 1.5 12N O LFTX
Y54B101C1RD0XFP	K12SB L RD0 1.5 12N O LFTX
Y54B101C1000XFP	K12SB S 1.5 12N O LFTX
Y54B10130AM0XFP	K12SB L AM0 1.5 3N O LFTX
Y54B10130GN0XFP	K12SB L GN0 1.5 3N O LFTX
Y54B10130OR0XFP	K12SB L OR0 1.5 3N O LFTX
Y54B10130RD0XFP	K12SB L RD0 1.5 3N O LFTX
Y54B10130WH0XFP	K12SB L WH0 1.5 3N O LFTX
Y54B10130YE0XFP	K12SB L YE0 1.5 3N O LFTX
Y54B10130000XFP	K12SB S 1.5 3N O LFTX
Y54B10151AM0XFP	K12SB L AM0 1.5 5N O LFTX
Y54B10151GN0XFP	K12SB L GN0 1.5 5N O LFTX
Y54B10151OR0XFP	K12SB L OR0 1.5 5N O LFTX
Y54B10151RD0XFP	K12SB L RD0 1.5 5N O LFTX
Y54B10151WH0XFP	K12SB L WH0 1.5 5N O LFTX
Y54B10151YE0XFP	K12SB L YE0 1.5 5N O LFTX
Y54B10151000XFP	K12SB S 1.5 5N O LFTX
Y54B10161AM0XFP	K12SB L AM0 1.5 6N O LFTX
Y54B10161GN0XFP	K12SB L GN0 1.5 6N O LFTX
Y54B10161OR0XFP	K12SB L OR0 1.5 6N O LFTX
Y54B10161RD0XFP	K12SB L RD0 1.5 6N O LFTX
Y54B10161WH0XFP	K12SB L WH0 1.5 6N O LFTX
Y54B10161YE0XFP	K12SB L YE0 1.5 6N O LFTX
Y54B10161000XFP	K12SB S 1.5 6N O LFTX
Y54B10191AM0XFP	K12SB L AM0 1.5 9N O LFTX
Y54B10191GN0XFP	K12SB L GN0 1.5 9N O LFTX
Y54B10191OR0XFP	K12SB L OR0 1.5 9N O LFTX
Y54B10191RD0XFP	K12SB L RD0 1.5 9N O LFTX
Y54B10191WH0XFP	K12SB L WH0 1.5 9N O LFTX
Y54B10191YE0XFP	K12SB L YE0 1.5 9N O LFTX
Y54B10191000XFP	K12SB S 1.5 9N O LFTX
Y54B2C130000XFP	K12SB D 1.5 3N CC LFTX
Y54B201C1000XFP	K12SB D 1.5 12N OO LFTX
Y54B201C1002XFP	K12SB D 1.5 12N OO LFTX SBD
Y54B20130000XFP	K12SB D 1.5 3N OO LFTX
Y54B20151000XFP	K12SB D 1.5 5N OO LFTX
Y54B20161000XFP	K12SB D 1.5 6N OO LFTX
Y54B20191000XFP	K12SB D 1.5 9N OO LFTX
Y54B20341481XFP	K12SB D 1.5 4/8N OO LFTX
Y54B203614C1XFP	K12SB D 1.5 6/12N OO LFTX

C&K

2 rue Berthollet - B.P. 359 F-39105 Dole Cedex - France
 Tel :+33 (0)3 84 72 81 12 www.ckswitches.com

Document subject to change without prior notice

Material N°	Description
Y54C1C130AM0XFP	K12SC L AM0 1.5 3N C LFTX
Y54C1C130GN0XFP	K12SC L GN0 1.5 3N C LFTX
Y54C1C130OR0XFP	K12SC L OR0 1.5 3N C LFTX
Y54C1C130RD0XFP	K12SC L RD0 1.5 3N C LFTX
Y54C1C130WH0XFP	K12SC L WH0 1.5 3N C LFTX
Y54C1C130YE0XFP	K12SC L YE0 1.5 3N C LFTX
Y54C1C130000XFP	K12SC S 1.5 3N C LFTX
Y54C1C141000XFP	K12SC S 1,5 3,5N C LFTX
Y54C1C151000XFP	K12SC S 1,5 5N C LFTX
Y54C101C1AM0XFP	K12SC L AM0 1.5 12N O LFTX
Y54C101C1RD0XFP	K12SC L RD0 1.5 12N O LFTX
Y54C101C1000XFP	K12SC S 1.5 12N O LFTX
Y54C10130AM0XFP	K12SC L AM0 1.5 3N O LFTX
Y54C10130GN0XFP	K12SC L GN0 1.5 3N O LFTX
Y54C10130OR0XFP	K12SC L OR0 1.5 3N O LFTX
Y54C10130RD0XFP	K12SC L RD0 1.5 3N O LFTX
Y54C10130WH0XFP	K12SC L WH0 1.5 3N O LFTX
Y54C10130YE0XFP	K12SC L YE0 1.5 3N O LFTX
Y54C10130000XFP	K12SC S 1.5 3N O LFTX
Y54C10151AM0XFP	K12SC L AM0 1.5 5N O LFTX
Y54C10151GN0XFP	K12SC L GN0 1.5 5N O LFTX
Y54C10151OR0XFP	K12SC L OR0 1.5 5N O LFTX
Y54C10151RD0XFP	K12SC L RD0 1.5 5N O LFTX
Y54C10151WH0XFP	K12SC L WH0 1.5 5N O LFTX
Y54C10151YE0XFP	K12SC L YE0 1.5 5N O LFTX
Y54C10151000XFP	K12SC S 1.5 5N O LFTX
Y54C10161AM0XFP	K12SC L AM0 1.5 6N O LFTX
Y54C10161GN0XFP	K12SC L GN0 1.5 6N O LFTX
Y54C10161OR0XFP	K12SC L OR0 1.5 6N O LFTX
Y54C10161RD0XFP	K12SC L RD0 1.5 6N O LFTX
Y54C10161WH0XFP	K12SC L WH0 1.5 6N O LFTX
Y54C10161YE0XFP	K12SC L YE0 1.5 6N O LFTX
Y54C10161000XFP	K12SC S 1.5 6N O LFTX
Y54C10191AM0XFP	K12SC L AM0 1.5 9N O LFTX
Y54C10191GN0XFP	K12SC L GN0 1.5 9N O LFTX
Y54C10191OR0XFP	K12SC L OR0 1.5 9N O LFTX
Y54C10191RD0XFP	K12SC L RD0 1.5 9N O LFTX
Y54C10191WH0XFP	K12SC L WH0 1.5 9N O LFTX
Y54C10191YE0XFP	K12SC L YE0 1.5 9N O LFTX
Y54C10191000XFP	K12SC S 1.5 9N O LFTX
Y54C2C130000XFP	K12SC D 1.5 3N CC LFTX
Y54C2C151000XFP	K12SC D 1.5 5N CC LFTX
Y54C201C1000XFP	K12SC D 1.5 12N OO LFTX
Y54C20130000XFP	K12SC D 1.5 3N OO LFTX
Y54C20151000XFP	K12SC D 1.5 5N OO LFTX
Y54C20161000XFP	K12SC D 1.5 6N OO LFTX
Y54C20191000XFP	K12SC D 1.5 9N OO LFTX
Y54C20341481XFP	K12SC D 1.5 4/8N OO LFTX
Y54C203614C1XFP	K12SC D 1.5 6/12N OO LFTX

Material N°	Description
Y54D1C130AM0XFP	K12SD L AM0 1.5 3N C LFTX
Y54D1C130GN0XFP	K12SD L GN0 1.5 3N C LFTX
Y54D1C130OR0XFP	K12SD L OR0 1.5 3N C LFTX
Y54D1C130RD0XFP	K12SD L RD0 1.5 3N C LFTX
Y54D1C130WH0XFP	K12SD L WH0 1.5 3N C LFTX
Y54D1C130YE0XFP	K12SD L YE0 1.5 3N C LFTX
Y54D1C130000XFP	K12SD S 1.5 3N C LFTX
Y54D1C191000XFP	K12SD S 1.5 9N C LFTX
Y54D101C1AM0XFP	K12SD L AM0 1.5 12N O LFTX
Y54D101C1RD0XFP	K12SD L RD0 1.5 12N O LFTX
Y54D101C1000XFP	K12SD S 1.5 12N O LFTX
Y54D10130AM0XFP	K12SD L AM0 1.5 3N O LFTX
Y54D10130GN0XFP	K12SD L GN0 1.5 3N O LFTX
Y54D10130OR0XFP	K12SD L OR0 1.5 3N O LFTX
Y54D10130RD0XFP	K12SD L RD0 1.5 3N O LFTX
Y54D10130WH0XFP	K12SD L WH0 1.5 3N O LFTX
Y54D10130YE0XFP	K12SD L YE0 1.5 3N O LFTX
Y54D10130000XFP	K12SD S 1.5 3N O LFTX
Y54D10151AM0XFP	K12SD L AM0 1.5 5N O LFTX
Y54D10151GN0XFP	K12SD L GN0 1.5 5N O LFTX
Y54D10151OR0XFP	K12SD L OR0 1.5 5N O LFTX
Y54D10151RD0XFP	K12SD L RD0 1.5 5N O LFTX
Y54D10151WH0XFP	K12SD L WH0 1.5 5N O LFTX
Y54D10151YE0XFP	K12SD L YE0 1.5 5N O LFTX
Y54D10151000XFP	K12SD S 1.5 5N O LFTX
Y54D10161AM0XFP	K12SD L AM0 1.5 6N O LFTX
Y54D10161GN0XFP	K12SD L GN0 1.5 6N O LFTX
Y54D10161OR0XFP	K12SD L OR0 1.5 6N O LFTX
Y54D10161RD0XFP	K12SD L RD0 1.5 6N O LFTX
Y54D10161WH0XFP	K12SD L WH0 1.5 6N O LFTX
Y54D10161YE0XFP	K12SD L YE0 1.5 6N O LFTX
Y54D10161000XFP	K12SD S 1.5 6N O LFTX
Y54D10191AM0XFP	K12SD L AM0 1.5 9N O LFTX
Y54D10191GN0XFP	K12SD L GN0 1.5 9N O LFTX
Y54D10191OR0XFP	K12SD L OR0 1.5 9N O LFTX
Y54D10191RD0XFP	K12SD L RD0 1.5 9N O LFTX
Y54D10191WH0XFP	K12SD L WH0 1.5 9N O LFTX
Y54D10191YE0XFP	K12SD L YE0 1.5 9N O LFTX
Y54D10191000XFP	K12SD S 1.5 9N O LFTX
Y54D2C130000XFP	K12SD D 1.5 3N CC LFTX
Y54D2C151000XFP	K12SD D 1.5 5N CC LFTX
Y54D201C1000XFP	K12SD D 1.5 12N OO LFTX
Y54D20130000XFP	K12SD D 1.5 3N OO LFTX
Y54D20151000XFP	K12SD D 1.5 5N OO LFTX
Y54D20161000XFP	K12SD D 1.5 6N OO LFTX
Y54D20191000XFP	K12SD D 1.5 9N OO LFTX
Y54D20341481XFP	K12SD D 1.5 4/8N OO LFTX
Y54D203614C1XFP	K12SD D 1.5 6/12N OO LFTX

C&K

2 rue Berthollet - B.P. 359 F-39105 Dole Cedex - France
 Tel :+33 (0)3 84 72 81 12 www.ckswitches.com

Document subject to change without prior notice

Material N°	Description
Y54E1C130000-FP	K12S ES 1,5 3N C LFT
Y54E1C130000XFP	K12S ES 1,5 3N C LFTX
Y54E101A1000-FP	K12S ES 1,5 9N RFH 0 LFT
Y54E101A1000XFP	K12S ES 1,5 9N RFH 0 LFTX
Y54E10130000-FP	K12S ES 1,5 3N 0 LFT
Y54E10130000XFP	K12S ES 1,5 3N 0 LFTX
Y54E10191000-FP	K12S ES 1,5 9N 0 LFT
Y54E10191000XFP	K12S ES 1,5 9N 0 LFTX

Material N°	Description
Y54F1C130WH0ZFP	K12SF L WHO 1.5 3N C LFTZ
Y54F1C130000-FP	K12S F S 1,5 3N C LFT
Y54F1C130000XFP	K12S F S 1,5 3N C LFTX
Y54F1C130000ZFP	K12SF S 1.5 3N C LFTZ
Y54F1C191WH0ZFP	K12SF L WHO 1.5 9N C LFTZ
Y54F1C191000ZFP	K12SF S 1.5 9N C LFTZ
Y54F101A1000-FP	K12S F S 1,5 9N RFH 0 LFT
Y54F101A1000XFP	K12S F S 1,5 9N RFH 0 LFTX
Y54F101C1WH0ZFP	K12SF L WHO 1.5 12N O LFTZ
Y54F101C1000ZFP	K12SF S 1.5 12N O LFTZ
Y54F10130000-FP	K12S F S 1,5 3N 0 LFT
Y54F10130000XFP	K12S F S 1,5 3N 0 LFTX
Y54F10151000ZFP	K12SF S 1.5 5N O LFTZ
Y54F10161WH0ZFP	K12SF L WHO 1.5 6N O LFTZ
Y54F10191WH0ZFP	K12SF L WHO 1.5 9N O LFTZ
Y54F10191000-FP	K12S F S 1,5 9N 0 LFT
Y54F10191000XFP	K12S F S 1,5 9N 0 LFTX
Y54F10191000ZFP	K12SF S 1.5 9N O LFTZ

Material N°	Description
Y54G101A1000-FP	K12S G S 1,5 9N RFH 0 LFT
Y54G101A1000XFP	K12S G S 1,5 9N RFH 0 LFTX

Material N°	Description
Y54H101A1000-FP	K12S H S 1,5 9N RFH 0 LFT
Y54H101A1000XFP	K12S H S 1,5 9N RFH 0 LFTX

Material N°	Description
Y54K1C130000-FP	K12SK S 1.5 3N C LFT
Y54K1C130000ZFP	K12SK S 1.5 3N C LFTZ
Y54K1C151WH0WFP	K12SK L WHO 1.5 5N C LFTW
Y54K1C151WH0ZFP	K12SK L WHO 1.5 5N C LFTZ
Y54K1C151000-FP	K12SK S 1.5 5N C LFT
Y54K1C151000ZFP	K12SK S 1.5 5N C LFTZ
Y54K1C191WH0WFP	K12SK L WHO 1.5 9N C LFTW
Y54K1C191WH0ZFP	K12SK L WHO 1.5 9N C LFTZ
Y54K101A1000-FP	K12SK S 1.5 9N RFH 0 LFT
Y54K101A1000ZFP	K12SK S 1.5 9N RFH 0 LFTZ
Y54K101C1WH0WFP	K12SK L WHO 1.5 12N O LFTW
Y54K101C1WH0ZFP	K12SK L WHO 1.5 12N O LFTZ
Y54K101C1000-FP	K12SK S 1.5 12N O LFT
Y54K101C1000ZFP	K12SK S 1.5 12N O LFTZ
Y54K10130WH0WFP	K12SK L WHO 1.5 3N O LFTW
Y54K10130WH0ZFP	K12SK L WHO 1.5 3N O LFTZ
Y54K10130000-FP	K12SK S 1.5 3N O LFT
Y54K10130000ZFP	K12SK S 1.5 3N O LFTZ
Y54K10151WH0WFP	K12SK L WHO 1.5 5N O LFTW
Y54K10151WH0ZFP	K12SK L WHO 1.5 5N O LFTZ
Y54K10151000-FP	K12SK S 1.5 5N O LFT
Y54K10151000ZFP	K12SK S 1.5 5N O LFTZ
Y54K10161WH0WFP	K12SK L WHO 1.5 6N O LFTW
Y54K10161WH0ZFP	K12SK L WHO 1.5 6N O LFTZ
Y54K10161000-FP	K12SK S 1.5 6N O LFT
Y54K10161000ZFP	K12SK S 1.5 6N O LFTZ
Y54K10191WH0WFP	K12SK L WHO 1.5 9N O LFTW
Y54K10191WH0ZFP	K12SK L WHO 1.5 9N O LFTZ
Y54K10191000-FP	K12SK S 1.5 9N O LFT
Y54K10191000ZFP	K12SK S 1.5 9N O LFTZ

Material N°	Description
Y54M101C1WH0WFP	K12SM L WHO 1.5 12N O LFTW
Y54M10130WH0WFP	K12SM L WHO 1.5 3N O LFTW
Y54M10151WH0WFP	K12SM L WHO 1.5 5N O LFTW
Y54M10161WH0WFP	K12SM L WHO 1.5 6N O LFTW
Y54M10191WH0WFP	K12SM L WHO 1.5 9N O LFTW
Y54M10191000-FP	K12SM S 1.5 9N O LFT

C&K

2 rue Berthollet - B.P. 359 F-39105 Dole Cedex - France
 Tel :+33 (0)3 84 72 81 12 www.ckswitches.com

Document subject to change without prior notice

5. Date of application

Depending on the part numbers, the change will begin on April 1st, 2026, and will be fully implemented by September 30th, 2026.

Production date traceability is recorded at C&K.

6. Conditions of application

All sales conditions remain valid.

Stock handling policy:

- Stock handling: no obsolescence. No return or scrap for obsolescence will be accepted

7. Acknowledgement

We kindly ask you to acknowledge receipt of this information to your sales representative so C&K can start planning the phase in – out process accordingly

8. Support

For any question, please contact your sales representative

C&K

2 rue Berthollet - B.P. 359 F-39105 Dole Cedex - France
Tel : +33 (0)3 84 72 81 12 www.ckswitches.com

Document subject to change without prior notice

PCN26-3-K12S - Internal design improvements and relocation of rubber boot assembly operation