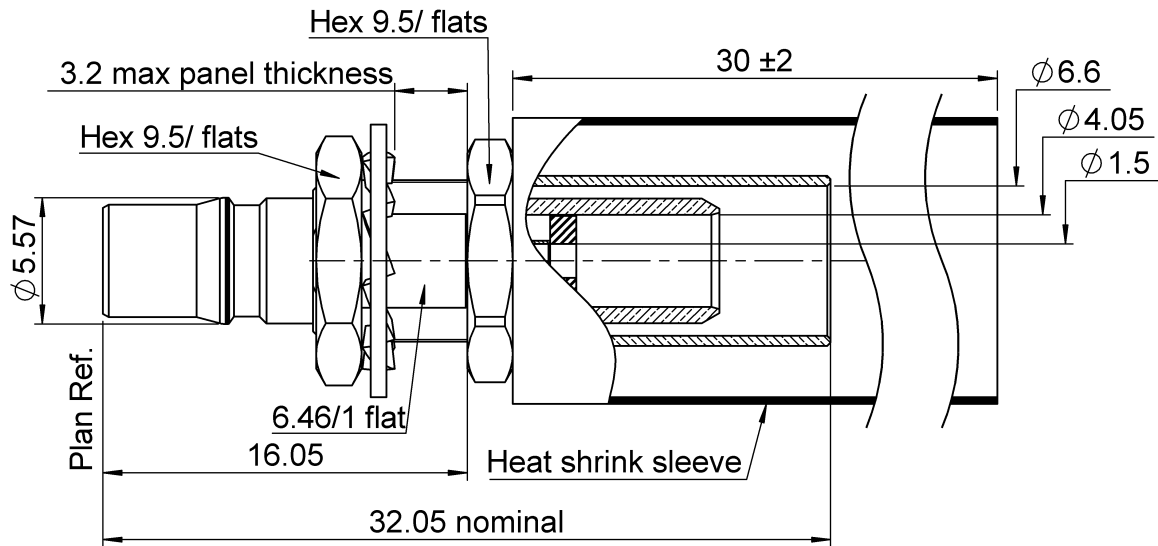
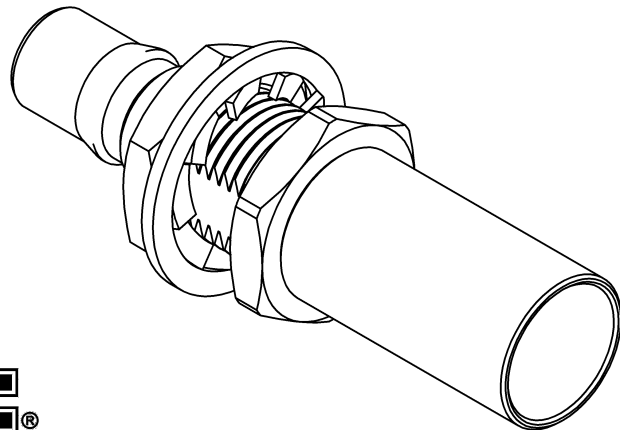
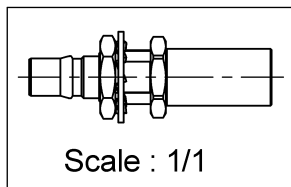
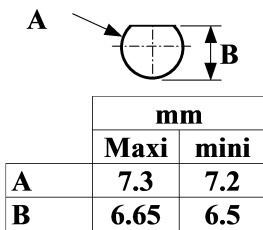


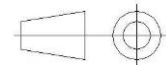
PAGE 1/3	ISSUE 23-07-25A	SERIES QMA	PART NUMBER R123314320
----------	-----------------	------------	------------------------



PANEL CUT OUT



All dimensions are in mm. Tolerances according ISO 2768 m-H



COMPONENTS	MATERIALS	PLATING (µm)
Body	BRASS	BBR
Center contact	BERYLLIUM COPPER	NPGR
Outer contact		
Insulator	PTFE	
Gasket		
Others parts	BRASS, BRONZE	BBR
-	-	-
-	-	-

PAGE 2/3	ISSUE 23-07-25A	SERIES QMA	PART NUMBER R123314320
-----------------	------------------------	-------------------	-------------------------------

PACKAGING

Standard	Unit	Other
100	"W"option	Contact us

ELECTRICAL CHARACTERISTICS

Impedance	50	Ω
Frequency	0-6	GHz
VSWR	1.12* + 0,0000	x F(GHz) Maxi
Insertion loss	0.05*	√F(GHz) dB Maxi
RF leakage	- (**80)	- F(GHz)) dB Maxi
Voltage rating	335	Veff Maxi
Dielectric withstanding voltage	1000	Veff mini
Insulation resistance	5000	MΩ mini

MECHANICAL CHARACTERISTICS

Center contact retention		
Axial force – Mating End	NA	N mini
Axial force – Opposite end	NA	N mini
Torque	NA	N.cm mini
Recommended torque		
Mating	NA	N.cm
Panel nut	160	N.cm
Clamp nut	NA	N.cm
A/F clamp nut	0,0000	mm
Mating life	100	Cycles mini
Nominal Weight (Add +15% for max weight)	6,6630	g

ENVIRONMENTAL

Operating temperature	-40/+105	°C
Hermetic seal	NA	Atm.cm3/s
Panel leakage	NA	

SPECIFICATION

CABLE ASSEMBLY

Stripping mm	a	b	c	d	e	f
	3,900	7,600	11,500	0,000	7,600	0,000

Assembly instruction: **See page 3**

Recommended cable(s)

LLC 240

Characteristics indicated on this data sheet are those that can be achieved with the highest performance cable. Intrinsic limitations of the cable may diminish the performance of the assembly

Cable retention

- pull off	200	N mini
- torque	NA	N.cm

TOOLING

Hexagon	Part Number	Description
Hex 6.48 / flats (for sleeve)	R282235023	CRIMPING DIES HEX6.48 & HEX1.57
Hex 1.57/flats (for center contact)	R282293000	CRIMPING TOOL M22520/5-01

OTHER CHARACTERISTICS

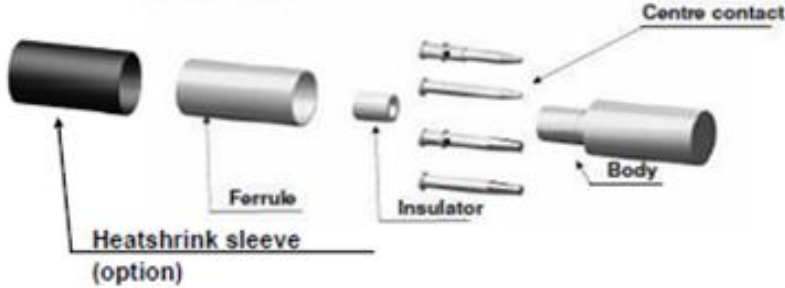
***VSWR : 1.12 max@0-3GHz, 1.2 max@3-6 GHz**

****RF Leakage interf only:3<F<6GHz:<-70dB**

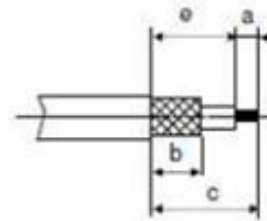
***Depends on cable used.**

PAGE 3/3	ISSUE 23-07-25A	SERIES QMA	PART NUMBER R123314320
----------	-----------------	------------	------------------------

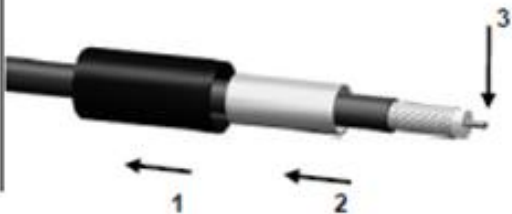
COMPONENTS



STRIPPING DIMENSIONS



1
Slide the heatshrink sleeve onto the cable (Option).
Slide the ferrule onto the cable.
Strip the cable.



2
Slide the center contact and insulator on the cable,
Until the insulator bottom against the cable dielectric.
Crimp the center contact.



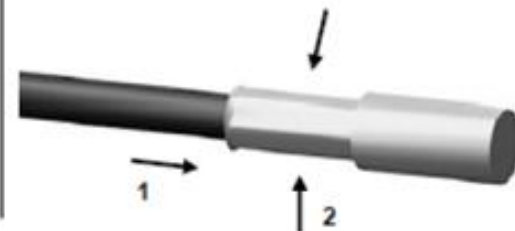
3
Fan the braid.



4
Slide the cable into the body until it bottoms against the insulator.



5
Slide the ferrule over the braid.
Crimp the ferrule with crimping tool (see connector TDS).



6
Cut the excess of braid if necessary.
Slide the sleeve over the ferrule and heatshrink it in place (Option).

