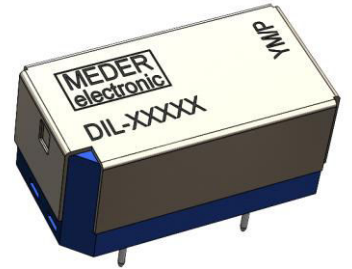


Product Change Notice

DIL Series - Reed Relay

The connection method between metal case and plastic housing



Dear customer,

We would like to inform you of the below **Product Change** which was made in an ongoing effort to improve the connection strength between metal case and plastic housing of our DIL Series reed relay. The connection method between metal case and plastic house has been changed from gluing to mechanical interlocking. This improvement ensures higher adhesion and stability of the connection between the plastic housing and the metal case.

Please note: This improvement will not affect the electrical properties, mechanical dimensions, and reliability of the relay.

Part Number Affected	Item NO.	Raw Material Modification Date	Estimated Delivery Date of First Batch After Change
DIL12-1C90-BV16239	1312116239	June 2025	August 2025
DIL-CL-1A66-BV613	1317100613		
DIL-CL-1A81-9-13M	1318109013		
DIL-CL-1A81-4/4-18M	1318144018		
DIL05-1A66-BV290	1305171290		
DIL-CL-1A81-9-15M	1310009015		
DIL12-1C90-BV238	1312190238		
DIL-CL-1A81-9/9-BV501	1318199501		

Detailed modification is shown on next page.

Carl Cui
Relay Engineer

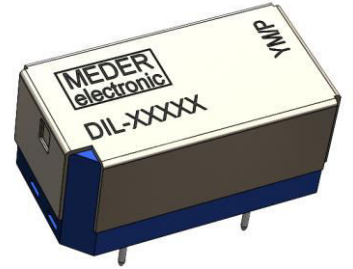
Jeff Wang
Engineering Manager

Lawrence Yong
Quality Manager

David Stastny
Product Manager

Product Change Notice – DIL Series Relay

— The connection method between metal case and plastic house



Change 1#. Metal case with added protrusion

Old Metal Case



New Metal Case

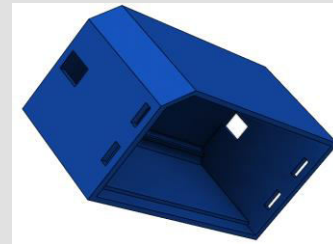


Change 2#. Plastic house with added locking port

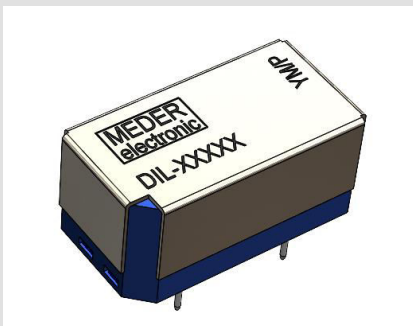
Old Plastic House



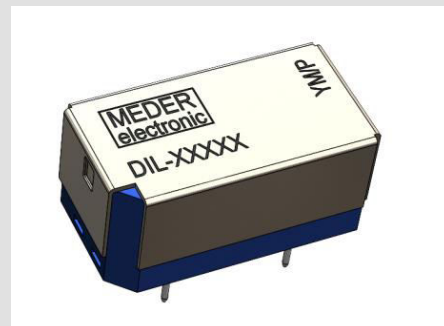
New Plastic House



Old product with gluing method



New product with Interlocking method



Dear Sir or Madam,

We are pleased to inform you about the product changes to the following items:

1310009015 - DIL - CL-1A81-9-15M

1318109013 - DIL-CL-1A81-9-13M

If you have any questions, please do not hesitate to contact us.