



ttieurope.com

European Headquarters

TTI, Inc.
Ganghoferstrasse 34
82216 Maisach-Gernlinden
Germany
T: +49-8142-6680-0
F: +49-8142-6680-490
E: sales@de.ttiinc.com
TTI, Inc. Sales
Austria
Vienna
Amalienstrasse 48
Top10
1130 Wien
T: +43 - 1 - 87 98 5 90
F: +43 - 1 - 87 98 59 010
E: sales.vienna@at.ttiinc.com
Benelux
Eindhoven
ESP 230
5633 AC Eindhoven
Netherlands
T: +31 40 290 16 16
F: +31 40 290 16 10
E: sales.benelux@nl.ttiinc.com
Bulgaria
TVA Project EOOD
d-r Anastasia Jeljazkova str 3,
office 5
9023 Varna
T: +359 52 51 10 59
F: +359 52 51 10 59
E: sales.varna@bg.ttiinc.com
Czech/Slovak Republic
Brno
Palackeho trida 3019/153b
612 00 Brno
Czech Republic
T: +420 541 126 714
F: +420 541 126 730
E: sales.brno@cz.ttiinc.com
Denmark
Copenhagen
Engager 2 - 4
2605 Brøndby
T: +45 (0)43 29 35 35
F: +45 (0)43 29 35 30
E: sales.copenhagen@dk.ttiinc.com
Hammel
Bane Allé 8F
8450 Hammel
T: +45(0)38 41 31 00
F: +45(0)70 70 11 74
E: sales.copenhagen@dk.ttiinc.com
Finland & Baltic Region
Espoo
Stella Business Park
Lars Sonckin Kaari 14
4th floor
02600 Espoo
Finland
T: +358 98 94 65 200
F: +358 98 94 65 210
E: sales.finland@fi.ttiinc.com

North America

Delphi Connection Systems
1265 North River Rd. MC. 11C
Warren, OH 44483 USA
Tel: +[1] 330.373.3630

Europe, Middle East & Africa

Customer Technical Center
Delphiplatz 1
42119 Wuppertal, Germany
Tel: +[49] 202.291.2072

delphi.com

©2015 Delphi Automotive LLC. All rights reserved. DE_EAen150364

France

Brive
Le Voltaire
1, Avenue Léo Lagrange
19100 Brive-La-Gaillarde
T: +33 (0)5 55 92 92 93
F: +33 (0)5 55 92 91 90
E: sales.france@fr.ttiinc.com
Lyon
30-32, Rue du 35ème
Régiment d'Aviation
Les Espaces du Chêne
69500 - Bron
T: +33(0) 4 72 81 2030
F: +33(0) 4 72 81 2033
E: sales.lyon@fr.ttiinc.com
Paris
Immeuble Espace Ouest
6 Avenue du Vieil Etang
78180 Montigny le Bretonneux
T: +33(0) 1 30 13 73 80
F: +33(0) 1 30 13 73 99
E: sales.paris@fr.ttiinc.com
Rennes
Parc d'affaires Cioéa
2, Rue du Courtil
35170 Bruz
T: +33 (0)2 99 77 60 84
F: +33 (0) 2 99 41 18 47
E: sales.rennes@fr.ttiinc.com
Germany
Berlin
Joachimstaler Strasse 20
10719 Berlin
T: +49 30 88 77 40 200
F: +49 30 88 77 40 299
E: sales.berlin@de.ttiinc.com
Dortmund
Airport-Office-Center
Robert-Bosch-Strasse 2, 2nd floor
59439 Holzwickede
T: +49 (0)2301 91 304-0
F: +49 (0)2301 91 304-11
E: sales.dortmund@de.ttiinc.com
Frankfurt
Frankfurter Strasse 233,
Triforum Bauteil C3 - 3. OG
63263 Neu-Isenburg
T: +49 (0)6102-5999-100
F: +49 (0)6102-5999-199
E: sales.frankfurt@de.ttiinc.com
Hannover
Strassburger Platz 21
30855 Langenhagen
T: +49 (0)5 11 7 80 59 0
F: +49 (0)5 11 7 42 49 0
E: sales.hannover@de.ttiinc.com
Munich
Junkersstrasse 1
82178 Puchheim
T: +49 8142 6680 110
F: +49 8142 6680 199
E: sales.munich@de.ttiinc.com
Stuttgart
Habermehlstrasse 19
75172 Pforzheim
T: +49 (0)7231 14788 0
F: +49 (0)7231 14788 99
E: sales.stuttgart@de.ttiinc.com
Hungary
Budapest
Robert Karoly KRT 59
1134 Budapest
T: +36 1 40 22 111
F: +36 1 40 22 102
E: sales.budapest@hu.ttiinc.com

Asia Pacific

60 Yuan Guo Road
Anting, Jiading District
Shanghai, China 201814
Tel: +[86] 21.5959.2200 ext. 7649

South America

Delphi Automotive Systems
Rod. Dos Tamoios, KM 21, 8
Jambeiro, Sao Paulo 12270-000 Brazil
Tel: +[55] 12.3978.2005

Ireland

T: +353 (0)21 480 80 70
F: +353 (0)21 432 33 50
E: sales.ireland@ie.ttiinc.com
Israel
Hagilboa St. P.O.B. 46
Airport City 7015001
T: +972-3-975-3333
F: +972-3-975-3300
E: sales@ti.ray-q.com
Italy
Bologna
Via S. Quasimodo 40
40013 Castelmaggiore (BO)
T: +39 051 63 21 863
F: +39 051 71 31 00
E: sales.milan@it.ttiinc.com
Firenze
Viale Corsica, 84/a
50127 Firenze
T: +39 055 094 63 76
F: +39 055 094 63 79
E: sales.milan@it.ttiinc.com
Milan
Centro Direzionale Milanofiori
Strada 1 Palazzo E1
20090 Assago-MI
T: +39 02 822 521
F: +39 02 822 522 33
E: sales.milan@it.ttiinc.com
Napoli
Via Manzoni 26H
80123 Napoli (NA)
T: +39 081 7148661
F: +39 081 7147859
M: +39 392 4469167,
+39 327 7030718
E: sales.milan@it.ttiinc.com
Padova
Via Longhin 83
35129 Padova
T: +39 049 77 46 83
F: +39 049 79 277 38
E: sales.milan@it.ttiinc.com
Marche
Via Cristoforo Colombo, 220
62012 Civitanove Marche (MC)
T: +39 0733 818655
F: +39 0733 70 92 22
E: sales.milan@it.ttiinc.com
Roma
T: +39 0774 571302
F: +39 02 82252940
E: sales.rome@it.ttiinc.com
Norway
Neumannsgate 6,
3044 Drammen
T: +47 92 66 87 66
E: sales.norway@no.ttiinc.com
Poland
Kwidzyn
Ul. 11 Listopada 21
82500 Kwidzyn
T: +48 55 279 67 57
F: +48 55 279 75 50
E: sales.poland@pl.ttiinc.com
Portugal
Largo Comercial Lago
Discount Lote 84 - ED
A3 - Piso 1 - Sala HC
4760-727 Ribeirao (VNF)
T: +351 (0)252 493 084
F: +351 (0)252 493 084
E: sales.barcelona@es.ttiinc.com

Romania

Complete International
Business Consulting
Calea Turzii Nr. 231-233
400495 Cluj Napoca
T: +40 (0)264 439 103
F: +40 (0)264 439 106
E: sales.romania@ro.ttiinc.com
Russia
Saint Petersburg
Orion LLC
Chernaya Rechka Emb. 4,
build.7, off. 519
Sankt-Petersburg 197342
T: +7 812 4962053
F: +7 812 4962053
E: sales.russia@ru.ttiinc.com
South Africa
PO Box 1629
Honeydew
2040
Gauteng
T: +27 11 795 2691
F: +27 866 719 753
E: sales.southafrica@za.ttiinc.com
Spain
Barcelona
TTI Especialistas en Pasivos
y Conectores S.L.
Passeig del Ferrocarril, 335 2º 3ª
08860 Castelldefels
Barcelona
T: +34 93 645 25 75
F: +34 93 645 25 93
E: sales.barcelona@es.ttiinc.com
Madrid
Avenida Castilla 2 F Esc A 1º1ª
Edificio Francia-Parque Empresarial
San Fernando
28830 San Fernando De Henares
T: +34 91 416 11 90
F: +34 91 416 12 90
E: sales.madrid@es.ttiinc.com
Bilbao
C/ Sasikoa, N°26-2ªAB
48200 Durango (Vizcaya)
Vizcaya
T: +34 94 623 25 80
F: +34 94 623 25 81
E: sales.bilbao@es.ttiinc.com
Sweden
Stockholm
Kanalvagen 18, 1tr
19461 Upplands Väsby
T: +46 (0)8 594 11 800
F: +46 (0)8 594 11 801
E: sales.stockholm@se.ttiinc.com
Gothenburg
Mölnlycke Fabriker 16
435 35 Mölnlycke
T: +46 (0)31 741 12 90
F: +46 (0)31 741 12 91
E: sales.gothenburg@se.ttiinc.com
Switzerland
Bahnhofstrasse 4
6340 Baar
T: +41(0) 41 767 41 90
F: +41 (0)41 767 41 99
E: sales.swiss@ch.ttiinc.com
Turkey
Barbaros Mah. Ak Zambak Sok.
Uphill Court Sitesi 1B Apt.
3A/81
34746
Atasehir-Istanbul
M: +90 533 515 76 00
E: Biran.Yilmaz@tr.ttiinc.com

Tunisia

Résidence Raoudha
Apt 311
Rue du Lac Windermere
1053 Berges du Lac - Tunis
T: +216 71 862 693
F: +216 71 862 474
E: nabil.soussi@fr.ttiinc.com
United Kingdom
London
Suite C, First Floor, Artisan Building
Hillbottom Road
High Wycombe
HP12 4HJ
Bucks
T: +44 (0)1494 460000
F: +44 (0)1494 460090
E: sales.london@uk.ttiinc.com
Essex
First Floor
1 Sable Court
Southfield Business Park
Basildon
SS15 6SR
T: +44 (0)1268 889520
F: +44 (0)1268 419225
E: mil-aero@uk.ttiinc.com
Essex
Military Aerospace Office
First Floor
1 Sable Court
Southfield Business Park
Basildon
SS15 6SR
T: +44 (0)1268 889 520
F: +44 (0)1268 419225
E: mil-aero@uk.ttiinc.com
Stevenage
Suite S06
Business + Technology Centre
Bessemer Drive
Stevenage
SG1 2DX
T: +44 (0)1438 794170
F: +44 (0)1438 791139
E: email: power@uk.ttiinc.com

Commercial & Specialty Vehicles Connection Systems



ttieurope.com

DELPHI

Innovation for the Real World

DELPHI

Innovation for the Real World

Commercial & Specialty Vehicles Connection Systems

Delphi Connection Systems has a global reputation for producing high quality electrical/electronic connectors and connection systems that meet and exceed customer requirements around the world. The technology and processes developed for our connection systems products are the result of our extensive customer focus and drive for innovation. It is our commitment to continue to work with customers to develop and deliver connection products that meet the ever-increasing standards of quality and performance for the commercial vehicle markets.

Delphi employs leading edge manufacturing technologies and a comprehensive range of design services to produce high performance, cost-effective connection systems available either off-the-shelf or custom designed. We design, manufacture, assemble, validate and deliver electrical/electronic connection products to meet customer's stringent manufacturing and performance requirements.

Delphi Advantages:

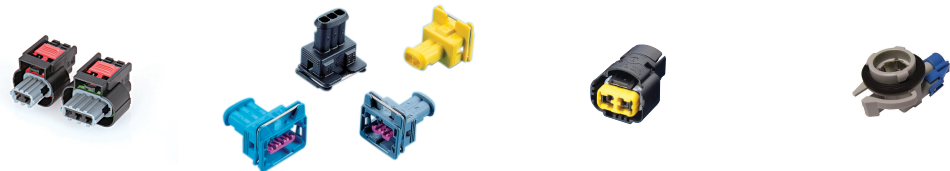
- Extensive multi-industry product portfolio
- Global collaboration with local execution
- Global participation on standard committees
- Global Electrical/Electronic architecture supplier
- Integrated systems approach
- Development of customer focused solutions

Delphi offers an extensive Portfolio of product solutions for our global customers. Our comprehensive product line ranges from signal-level through high-power connection systems. These include both unsealed and sealed, ergonomically designed connections for in-line, device and header applications. This varied portfolio positions us to be a single-source provider.



Major Techn

- Typical Markets:** Delphi Connection Systems' commercial and specialty vehicles connectors are designed for a wide range of product applications including:
- Commercial vehicles
 - Construction/Agriculture vehicles
 - Electric vehicles
 - Marine vehicles
 - Military/Aerospace
 - Motorcycles/Specialty vehicles

				
Connector Family	Sensor Connectors	G-Lock	Lamp Connectors	Lamp Sockets
Connector Type	<ul style="list-style-type: none">- APEX SensoMate 1.2 mm sealed 3 and 4 way- APEX SensoMate 2.8 mm sealed 2 and 3 way- DCS SensoMate 2.8 mm sealed 2 and 3 way	<ul style="list-style-type: none">- DCS G-Lock 2.8 mm sealed connectors	<ul style="list-style-type: none">- HIR2/HB3/HB4 sealed- PG18.5 sealed & unsealed versions- PG20 sealed version- PGJ19 sealed version	<ul style="list-style-type: none">- Sealed and unsealed versions- W1 base type- W2 base type- W3 base type- B1,C1,C2 bayonet socket
Features/Benefits	<ul style="list-style-type: none">- High vibration resistance single wire sealing- For heavy duty diesel engine applications- Terminal position assurance (TPA)- APEX Sensomate compliant to USCAR guidelines	<ul style="list-style-type: none">- Axial sealing and single wire sealing- Mechanical coding- Terminal position assurance (TPA)- Steel spring connector locking- Several coding versions available- Suitable for high vibration and high temperature	<p>PG18.5 & PG20</p> <ul style="list-style-type: none">- Easy unmating thanks to robust rear latch- Housing locking principle- Front Terminal Position Assurance (TPA) <p>PGJ19</p> <ul style="list-style-type: none">- Safe mating and unmating thanks to robust and protected front and rear latch- Housing locking principle <p>APEX HIR2</p> <ul style="list-style-type: none">- Built around High-Performance APEX 2.8 Terminal System- HIR2 mates to standard industry bulbs of the increasingly popular halogen infrared variety	<ul style="list-style-type: none">- All conventional lamps- Accomodate virtually every size and type of light bulb, as well as all varieties of bulb mounting features
Typical Markets	<ul style="list-style-type: none">- Commercial vehicles- Construction, agricultural, marine vehicles	<ul style="list-style-type: none">- Commercial vehicles- Construction, agricultural, marine vehicles	<ul style="list-style-type: none">- Vehicles lighting	<ul style="list-style-type: none">- Vehicles lighting
Typical Application	Fuel injector, Actuator, Pressure sensor applications	Suitable for engine mount applications	Fog Lamps, Daytime Running Lights	



Connector Family	APEX	MCS	Panel Through Sealed Connectors	CMC	Relay Holders
Connector Type	<ul style="list-style-type: none">- In-line sealed connectors- APEX 150: 10, 14, 16 and 24 way ErgoMate™- APEX 2.8 mm: 2, 3, 4, 6, 10 & 14 ways	<ul style="list-style-type: none">- Housings using 1.8 mm terminals- 1 to 4, 6, 8, 10, 14, 18 & 20 ways	<ul style="list-style-type: none">- Connector solutions for Door to Body connections using Sicma 1.5 and 2.8 mm terminals connector solutions- 14, 16, 24, 34 and 50 ways	<ul style="list-style-type: none">- Full interconnect sealed solutions for engine management solutions using 0.64 and 1.5 GTS terminals- CMC (Connecteur Modulaire pour Calculateur) is one of the most popular interfaces for Engine Management Electronic Control Units- 32, 48, 64 & 112 ways	<ul style="list-style-type: none">- Relay interconnections offering a range of connector solutions- 4, 7, 8, 9 and 11 way sealed and unsealed connectors- 2.8mm, 4.8/6.3mm and 9.5mm terminals
Features/Benefits	<ul style="list-style-type: none">- High performance in-line connectors for vibration, high temperature, moisture or harsh assembly environment- Fulfill USCAR performance specifications- 2-piece APEX terminal technology- Clean Body Terminal design- No polarization needed- Tin, Silver and Gold plated versions available- Temperature range: -40 to 155 °C degree- Single Wire Seal (cable seal) compatible	<ul style="list-style-type: none">- Cost effective solution for unsealed applications- User friendly with integrated secondary lock device allowing for detection of unseated terminals (TPA)- Easy and quick connection system with latching lock principle	<ul style="list-style-type: none">- Suitable for a combination of low and medium current applications- Mating assistance system with slider to minimize mating force and allowing blind mating- Male terminals can be protected from hazardous damage of male blades thanks to a front grid protection	<ul style="list-style-type: none">- Accepts reversible wire dress cover- Right or left mountable rotating lever for mate assistance- 15 g sinus vibration resistant with Tin terminals- 1.5 Bar pressure proof sealing	<ul style="list-style-type: none">- Single wire sealing opportunity- Mechanical coding- Terminal position assurance (TPA)- Slider for connector mating force reduction (9 & 11 way, also optional version in 7 and 8 way with slider)
Typical Markets	<ul style="list-style-type: none">- Commercial vehicles- Construction, agricultural, marine vehicles	<ul style="list-style-type: none">- Commercial vehicles- Construction, agricultural, marine vehicles	<ul style="list-style-type: none">- Commercial vehicles- Construction, agricultural, marine vehicles	<ul style="list-style-type: none">- Commercial vehicles- Construction, agricultural, marine vehicles	<ul style="list-style-type: none">- Commercial vehicles- Construction, agricultural, marine vehicles
Typical Application	Suitable for harsh environments	Cockpit of any vehicle	Particularly suitable for door to body or engine to cockpit passthrough applications	<ul style="list-style-type: none">- Suitable for harsh environments- Powertrain Electronic Control Units	<ul style="list-style-type: none">- Preheating diesel engine, lightning relays, EOBD for emission control



TTI, Inc., a Berkshire Hathaway company, is a world leading specialist distributor of passive, connector, electromechanical and discrete components.

TTI Europe is headquartered in Maisach-Gernlinden near Munich, Germany. Our purpose-built facility occupies 19,000m², with 16,000 m² of dedicated warehouse space on all three levels, and services all European regions.

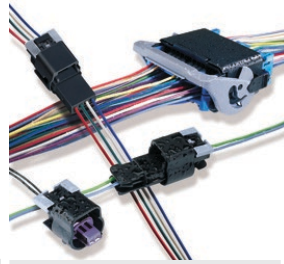
Globally, TTI is headquartered in Fort Worth, Texas and has over 100 locations across North America, Europe and Asia. TTI's philosophy is "Lead by Design", and the company differentiates itself by focusing on people, parts and process.

TTI in Europe strives to be the distributor of choice for customers and suppliers alike by introducing new product technologies and by stocking broad and deep inventory across its franchise base.

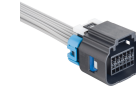
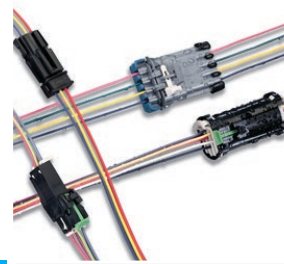
TTI's sophisticated inventory management system ensures the ability to service changes in demand due to fluctuating markets and supply chains.



Regional Distribution Centers



Connector Family	Harsh Environment Series (HES)	Power Pack 1000/2000	Weather Pack	GT
Connector Type	Circular connector size 24 shell Terminal patterns 19, 21, 23, 29, 31, 47 50 and 60 way Headers Terminals 1.0, 1.6, 2.4 mm	High current sealed connectors 1 and 2 ways – Inline – Right Angle	Sealed pin and sleeve system 1 to 6 and 22 ways	In-line sealed and unsealed 2 to 16 ways connectors using GT 1.50 and 2.80 mm terminals, sealed GT lever lock series for word class ergonomics
Features/Benefits	<ul style="list-style-type: none">- Terminal designed for lower insertion forces- 3-rib design provides better sealing capability up to 50% compared to existing designs- Environmentally sealed to IP67- Robust, specialized finger design virtually eliminates terminal unseats- Fully interchangeable with industry standards terminals and connections- Frontward/backward compatibility- Rugged construction to withstand harsh environments- Sonic welded design provides 360 degrees of contact to withstand high vibration to meet J-2030 standards- Validated to SAE J-2030 and various other customer specifications	<ul style="list-style-type: none">- High-current carrying capability- Power Pack 2000 – 250 A- Power Pack 1000 – 145 A- Hand engage/disengage eliminates the need for tools and reduces manufacturing time- Individually sealed terminal cavities for sealing protection- Terminal system can mate in the in-line or right-angle direction- Connector Position Assurance (CPA) and Terminal Position Assurance (TPA) for superior connection reliability- Robust vibration performance in harsh environments	<ul style="list-style-type: none">- Sealed system specifically designed to withstand exposure to extreme temperatures, chemicals, and fluids- Pin and sleeve configuration to alleviate stress relaxation- Secondary lock and Connector Position Assurance (CPA) for improved system design- Dual-locking tangs on terminals help prevent backing out- Terminal plugging requires no orientation- Positive locking indexing prevents mismating of connectors- Low energy, low voltage capability for vehicle electronics	<ul style="list-style-type: none">- Tangless terminals- Low engagement force- Pump-handle primary lock- Secondary lock, Connector Position Assurance (CPA), and Terminal Position Assurance (TPA) capabilities- Mates to ISO, SAE blades- Conforms to USCAR design footprint- Cam lever/mechanical assist or hand engage/disengage- Optimized content packaging for space efficient terminations- Pre-staged male blade stabilizer or superior male blade protection- Mixed terminal capability or design flexibility- Protected seal interface- Enhanced terminal
Typical Markets	<ul style="list-style-type: none">- Commercial vehicles- Construction vehicles- Military vehicles- Marine vehicles	<ul style="list-style-type: none">- Commercial vehicles- Construction/Agriculture vehicles (heavy duty trucks)	<ul style="list-style-type: none">- Commercial vehicles (medium duty vehicles)- Construction/Agricultural vehicles	<ul style="list-style-type: none">- Commercial vehicles- Marine vehicles
Typical Application	<ul style="list-style-type: none">- Ideally suited for making connections in a vehicle sheet metal firewall pass-through location.- Intended for use in any high density, in-line application.	<ul style="list-style-type: none">- Ideal fit for high-current/high-power sealed and unsealed applications- Electrical center power feed- Electric power steering- Front wall pass-through- High-current module interface- Hybrid vehicle modules- In-line for battery cable	<ul style="list-style-type: none">- Proven harsh environmentally sealed connections	<ul style="list-style-type: none">- Ergonomic connections for in-line, device, header, and bulkhead applications



Connector Family	Metri-Pack	PCS Power Connectors	OCS	Mini Sealed	DCS Power Sealed
Connector Type	Device and in-line connectors sealed and unsealed 150, 280, 480, 630 and mixed series, unsealed 800 series and junction systems	Device and in-line sealed and unsealed connectors, 0.8, 1.5, 2.8, 4.8, 6.3 and mixed series	In-line sealed and unsealed connectors; 0.64, 1.2, 1.5 and 2.8 mm terminals	<ul style="list-style-type: none">- High sealing performance in-line connectors using Sicma 1.5 and 2.8 mm terminals- 2, 3, 4, 5, 6 ways	<ul style="list-style-type: none">- Solutions for power Interconnection using 2.8mm, 4.8mm and 9.5mm DCS Power terminals- 2, 3, 4 ways
Features/Benefits	<ul style="list-style-type: none">- Enhanced products for high performance/high vibration- Validate to SAE J2030- Tangless terminals for durable design- Silver and gold plating- Used in high current to low energy circuits- Strength and stability of terminals help assure correct alignment- Utilizes internationally standard male blade sizes for design flexibility- Connector Position Assurance (CPA) and Terminal Position Assurance (TPA) for superior connection reliability- Sealed version for excellent resistance to temperatures, chemicals, and abrasion- Silver and gold platings	<ul style="list-style-type: none">- Two-piece terminal, tin, tin-silver, silver and gold plating available, multiple contact point technology- Excellent resistance to temperature, chemicals, corrosion and vibration- 2 metal lance primary locking- High electrical performance : 116 A max. (9.5 size with 16mm² cable crimp, temperature limit 170°C)- High performance connections incorporating robust two-piece terminals	<ul style="list-style-type: none">- Robust design features for enhanced warranty performance and designed-in durability- Clear and consistent audible click- Enhanced strain relief for blocked cavity configurations- Thumb grip incorporated to aid connector unmating- USCAR indexing- Cavity compatible with industry standard terminals- Validated to USCAR-2 Class III and other customer specifications- Small package size- Optional CPA	<ul style="list-style-type: none">- High sealing performance ensured by rear block-seal and circumferential interface seal- Optimized size with 3.33 mm pitch for 1.5 mm terminals- Reduced size sealed housing- Easy and quick connection system with locking principle- Integrated secondary lock feature (TPA) allowing detection of unlocked terminals- Terminal Position Assurance (TPA)- Optional Connector Position Assurance for 2 and 6 ways (CPA)	<ul style="list-style-type: none">- Connector position assurance (CPA - 2 ways)- Terminal position assurance (TPA)- User friendly with integrated secondary lock device allowing for detection of unseated terminals- Easy and quick connection system with terminal guiding system- Radial sealing and single wire sealing- Mechanical coding
Typical Markets	<ul style="list-style-type: none">- Commercial vehicles- Marine vehicles	<ul style="list-style-type: none">- Commercial vehicles- Construction, agricultural, marine vehicles	<ul style="list-style-type: none">- Commercial vehicles, agricultural, marine vehicles	<ul style="list-style-type: none">- Commercial vehicles- Construction, agricultural, marine vehicles	<ul style="list-style-type: none">- Commercial vehicles- Construction, agricultural, marine vehicles
Typical Application	<ul style="list-style-type: none">- Flat blade connections for electronic through high current applications	<ul style="list-style-type: none">- Engine compartment (Power steering)	<ul style="list-style-type: none">- Suitable for body & engine compartment applications	<ul style="list-style-type: none">- Suitable for body, engine compartment and harsh environment applications	<ul style="list-style-type: none">- Cooling fans, AC