

Dialight Product Line Card



**Bright Minds,
Bright Future.**

Dialight provides LED technology via housed CBI® LEDs, discrete SMT LEDs, right angle SMT process compatible Prism® LED, panel indicators and Optopipe® light pipes, to bring the indication where you need it.

With a legacy of quality and innovation, Dialight has been at the forefront of LED indication technology for over fifty years and continues to produce the best in indication solutions.

Dialight is the world leader in indication technology with more than 80 years of experience, providing customers the dependable quality and service levels they expect. Delivering a wide range of products from chip LEDs to larger industrial or military panel mount indicators, Dialight has the right solutions for virtually any indication application.

TTI brings you Dialight's full line of indication products used for a wide variety of applications including medical, military, industrial, telecom, and controls to customers manufacturing around the globe. From durable products used in harsh industrial environments to the light pipes and indicators for PCB applications, TTI has the inventory ready to ship.

Common Applications



Applications

Industrial

- Storage & Servers
- Automation Controls
- Test and Measurement
- Safety and Security
- Power Generation
- Oil and Gas
- Utilities
- Lighting
- Medical Equipment
- Sensors
- Any Industrial Applications

Transportation

- Heavy Duty Vehicles
- Rail
- Car charging stations

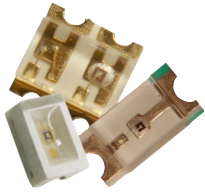
Defence, Aerospace & Space

- Marine
- Military/Aviation
- NVIS Applications

Telecommunications

Dialight Product Line Card

598 Series microLED® Surface Mount LEDs



- Chip LED in Ten Different Package Styles Including: 0603, 0606, 0805, 1206, 1208, 1210
- Single Color, Bi-Color, Tri-Color; Right Angle, Top and Reverse Mount
- Using Latest in AllInGaP and InGaN Technology
- Cost Competitive Pricing
- Also See 597 Series for Additional Chip LED and PLCC Packages

Based LED Bulbs 585 and 586 Series



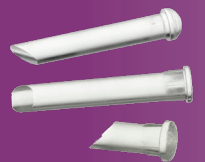
- Replaces traditional miniature incandescent bulbs with rugged long-lasting and energy-efficient LEDs
- T1 3/4" Midget Flange, Wedge Base and Bi-Pin, T3 1/4" Mini-Bayonet and Mini-Screw, T2 Telephone Slide, and 15mm Bayonet
- Voltages of 6, 14, 28 VDC, 6-36 VDC multi-voltage operation and 125 VAC available
- Colours: Red, Green, Yellow, Blue, and White

LED Panel Mount Indicators Plastic and Metal Housings



- Incorporating the latest LED Technology in tamper-proof Metal Housing Enclosures
- Wide range of Mounting Hole Diameters from 0.156" (3.9mm) - 1.18" (30mm)
- Operating Voltages 2-72 VDC, 125 and 230 VAC
- Some feature a water-tight seal to NEMA 4X / IP66/67 and Daylight Visibility
- Available in: Red, Green, Yellow, Orange, Blue, Cyan, and White

Optopipe® Light Pipes for Use with microLED® SMT



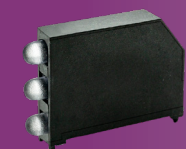
- Light Pipes Act as a Conduit for Directing Light from SMT to Front Panel Viewing Surfaces
- Right Angle and Vertical PCB or Panel Mount available in more than 200 sizes and shapes
- Allows edge lighting over and around a variety of components including SFP assemblies and RJ45 jacks
- Standard and Modified Standard Available

Military and Relampable Panel Mount Indicators



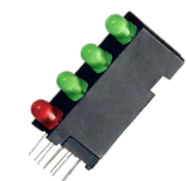
- Military - LH, LC and MS designations and QPL listed
- Incandescent or Neon, designed to mount into 15/32", 11/16" and 1" clearance holes
- Feature Water-Tight and Oil-Tight, Edge Lighting, Press-to-Test, and Dimmable Semi or Total Blackout
- Consult Dialight's Military Cross Reference for specific Part Number

Prism® Series Right Angle SMT



- Right Angle Surface Mountable solution
- 1.6mm, 2mm and 3mm lenses
- Tape and Reel / Pick and Place / Reflow Oven compatible
- Available with Square or Round Lens, and also in Low Current version
- Packaged in Single, Bi-, and Tri-Level configurations

Through Hole CBI® Circuit Board Indicators



- Configurations: Right Angle, Vertical and Horizontal ganged arrays in Single Bi, Tri, and Quad blocks
- 2mm, 3mm 4mm and 5mm Round and Rectangular
- Variety of colors and LED types including: Single and Bi-Color, Diffused, Water-Clear, Tinted, Super-Bright, and High-Efficiency
- Over 2500 variations, with Custom LED placement available