

**Honeywell**

THE POWER OF **CONNECTED**



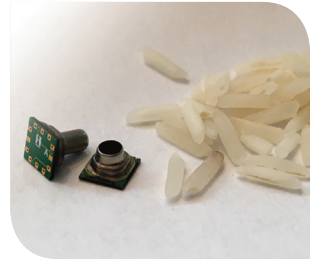
## **Making Sense of Sensing**

Cutting Edge Sensing Technology  
for the Connected World



# MicroPressure, MPR Series

Honeywell MicroPressure, MPR Series board mount pressure sensors provide industry leading performance, accuracy, and reliability. The ultra-small amplified sensor is fully calibrated, temperature compensated, and liquid media compatible with a digital output.



## Features

- Proprietary Honeywell technology
- Ultra-small and lightweight
- High accuracy, resolution, and stability
- Pressure range: 60 mbar to 2.5 bar
- Liquid media compatible

## Benefits

- Enhances equipment performance
- Enables new designs and applications
- Ideal for medical, industrial, and consumer applications
- Ideal for portable equipment
- Ideal for battery-powered applications
- Reduces design-in time and costs



## Medical

- Anesthesia machines
- Kidney dialysis
- Respiratory machines
- Sleep apnea equipment
- Spirometers
- Nebulizers

## Industrial

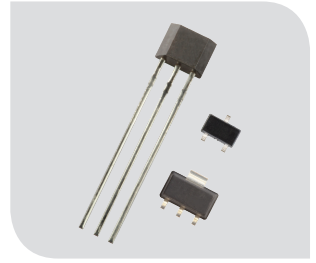
- Gas flow instrumentation
- HVAC filter detection
- Boiler application
- Air quality meters
- Pressure meters

## Commercial

- Washing machines
- Dishwashers
- Coffee machines
- Humidifiers
- Air beds

# Honeywell High Sensitivity Magnetoresistive Sensors

A suitable alternative to reed switches in applications where traditionally used.



## Features

- 7 Gauss typical sensitivity
- Surface mount SOT-23 housing
- Stable over entire operating temperature range
- Solid state technology
- Plastic moulded housing
- Ultra low power 360 nA version

## Benefits

- Similar or higher sensitivity
- Smaller than equivalent reed switches
- More reliable magnetic characteristics
- Does not wear out over time
- More robust than glass bulbs
- Suitable for battery operated devices



## Flow Sensing, Including Smart Utility Meters

- Counting mechanism
- Anti-tamper switches
- Solenoid valves with embedded flow meter

## Building Access and Security

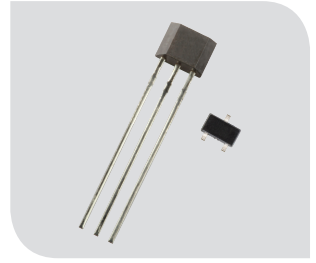
- Door/window alarm sensors
- Smart home connected applications
- Smart handles
- Digital key locks

## White Goods and Power Tools

- Door/lid position detection
- Liquid level and flow monitoring for washing machines and dishwashers
- Selector switch on battery operated light appliances/DIY and gardening power tools

# Honeywell Low Gauss Latch Hall-effect Sensors SS360/460 Series

The solution for highly efficient brushless DC motors.



## Features

- High sensitivity (30 Gauss typical)
- Stability over temperature
- Fastest response time
- Better repeatability or jitter
- No chopper stabilisation
- AECQ-100 version for automotive

## Benefits

- Design flexibility
- Reliability over full operating temperature
- Less accuracy and commutating issues
- Simpler design
- No electrical noise
- Suitable for automotive applications



## White Goods

- Fans
- Water pumps
- Washing machines and dryer drums
- Vacuum cleaner motors

## Automotive

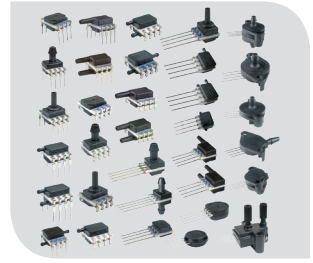
- HVAC blowers
- Seat motors
- Windshield wipers
- Window lifts
- Tachometers

## Factory Automation

- CNC machines
- Wrapping machines
- Sorting, handling, and conveying systems

# Board Mount Pressure Sensors

Honeywell board mount pressure sensors provide industry leading performance, accuracy, reliability, and value. Our extensive portfolio is offered with a wide choice of ports, package types, outputs, and pressure ranges.



## Features

- Proprietary Honeywell technology
- Industry-leading performance and accuracy
- Extensive portfolio (>1M configs)
- Small form-factor and lightweight
- Low power consumption
- Evaluation/sample kits

## Benefits

- Enhances equipment performance/accuracy
- Ideal for medical, industrial, and consumer applications
- Ideal for portable equipment
- Ideal for battery-powered applications
- Reduces design-in time and costs



## Medical

- Anesthesia machines
- Kidney dialysis machines
- Respiratory machines
- Sleep apnea equipment
- Spirometers
- Nebulizers

## Industrial

- Gas flow instrumentation
- HVAC filter detection
- Boiler application
- Air quality meters
- Pressure meters

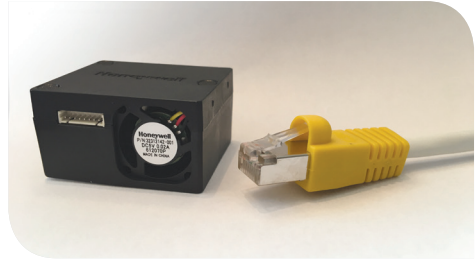
## Consumer

- Washing machines
- Dishwashers
- Coffee machines
- Humidifiers
- Air beds



# Particle Sensors

Particle sensors play a critical role in measuring and managing the quality of air we breathe to help protect our health.



## Features

- Accuracy:  $\pm 15\%$
- <6s response time
- 20,000 hours continuous use
- Stand-by option

## Benefits

- Repeatability and consistency of readings
- Real time readings
- Industry leading long life
- Reduces power consumption and increases sensor life



## HVAC

- Air conditioners
- Air quality monitors

## Environmental Monitoring

- Weather stations
- Public displays
- Handheld air quality detectors

## Consumer Products

- Air cleaners
- Air conditioners
- Air purifiers
- Car air cleaners
- Indoor air quality

# Transportation Attitude Reference Sensors (TARS-IMU)

High performance inertial measurement unit (IMU), reports vehicle angular rate, acceleration, and inclination (6 degrees of freedom).



## Features

- High performance and accuracy, angular range:  $\pm 85^\circ$  ( $\pm 0.06^\circ$ )
- Ruggedized package with IP69K sealing
- Industry standard CAN (J1939) connectivity
- Custom sensor fusion filtering
- Low power consumption

## Benefits

- Designed for heavy duty off-highway transportation industry
- Enhances equipment/vehicle productivity, efficiency, and safety
- Highly cost effective
- Easy to install and use



## Heavy Duty

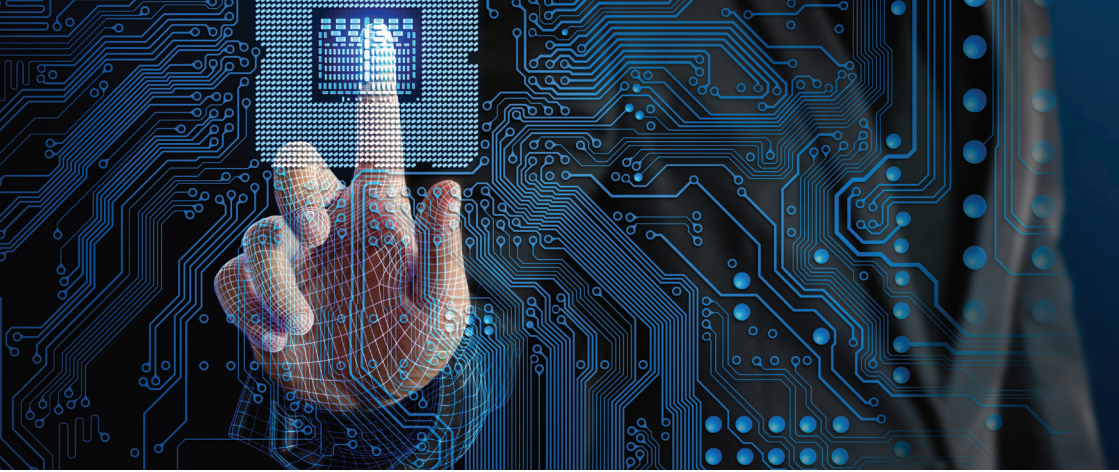
- Trucks
- Excavators
- Cranes
- Backhoes
- Drilling rigs

## Agriculture

- Tractors
- Grape harvesters
- Combine harvesters
- Plough/spray heads

## Fire Safety

- Forklifts
- Scissor lifts
- Platform lifts
- Fire engines



**D**iscover the potential of Honeywell Sensor Solutions, high-performance devices optimized for a variety of applications in commercial, medical, and industrial fields. Honeywell solutions are flexible and tailored to exact specifications — for stronger performance, longer productivity, and increased safety. And it all adds up to reduced expenditures and operational costs.

For more information on Honeywell Sensing and Internet of Things, visit [sensing.honeywell.com](http://sensing.honeywell.com).

**T**TI, Inc., a world leading specialist distributor of electronic components, has a long term strong partnership with Honeywell Sensing & IoT, investing in inventory and technical support for new product introductions.

TTI is poised to assist you in design and development activity to find the optimum solution from Honeywell's broad sensor product offering.

**For technical support, email:**  
[ttsensors@de.ttiinc.com](mailto:ttsensors@de.ttiinc.com)

*The Specialist in*  
*Electronic Component Distribution*  
[www.tti europe.com/sensors](http://www.tti europe.com/sensors)

**Honeywell Technologies**  
**Sàrl Z.A. La Pièce 16**  
CH-1180 Rolle  
Switzerland  
800-582-4263  
[www.honeywell.com](http://www.honeywell.com)

All rights reserved. Honeywell and its product names are among the trademarks and/or servicemarks owned by Honeywell International Inc., or its subsidiaries. All other trademarks are property of their respective owners.

TTI Making Sense of Sensing Brochure | Rev A | 05/18  
© 2018 Honeywell International Inc.

**Honeywell**

