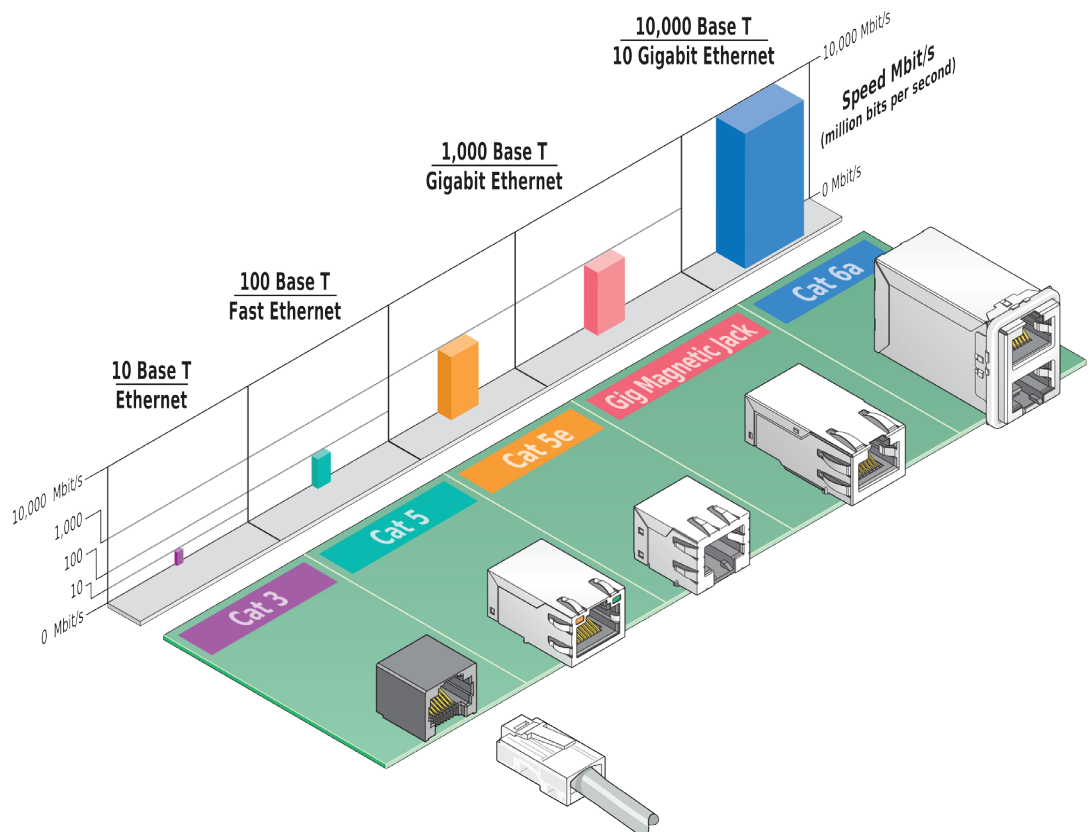


Standard Modular Jacks

Offering one of the largest industry standard product breadths of right-angle, vertical top and bottom-entry modular jacks in Cat3 and Cat5e Ethernet speeds, Molex has solutions to meet your design requirements.





Product Overview

Large variety of Modular Jacks

Circuit sizes / loaded contacts: 4/2, 4/4, 6/2, 6/4, 6/6, 8/2, 8/4, 8/6, 8/8, 8/10

Mating directions: right angle, vertical top and bottom-entry

With or without shielding

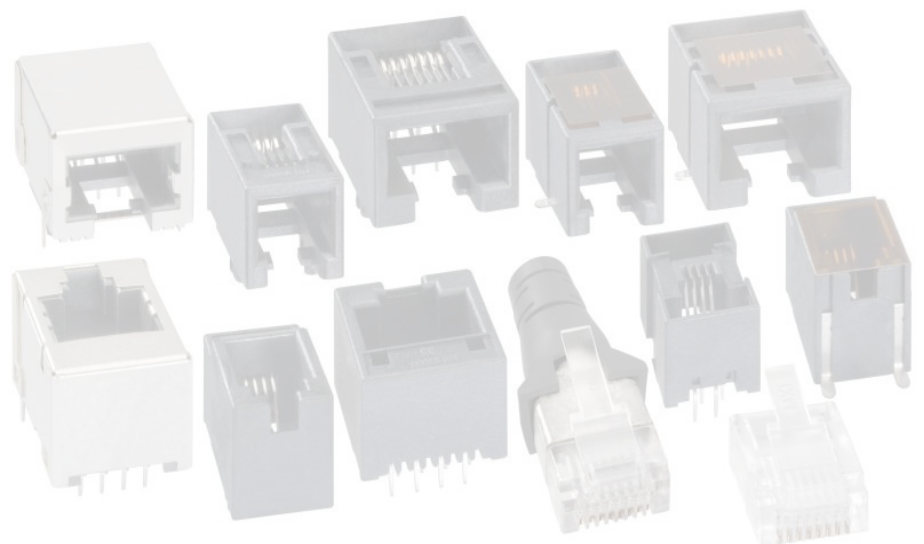
Single or multiple ports

Through-hole and SMT soldering

Speed: Cat3, Cat5e, Cat6a

Packaging: tray, tube and different size tape and reel

Light pipes and inverted versions are available



molex

[Selection Guide](#)[Overview](#)

Common Features

Mate with IEC 60603 plugs

Low profile versions

High reliability mating interface, PdNi with Au flash plating pass both IEC and 14 day MFG testing

2500 durability cycling

SMT options with through-hole solder pins provide high PCB retention using a pin-in-paste reflow process

High temperature resistance LCP suitable for reflow soldering

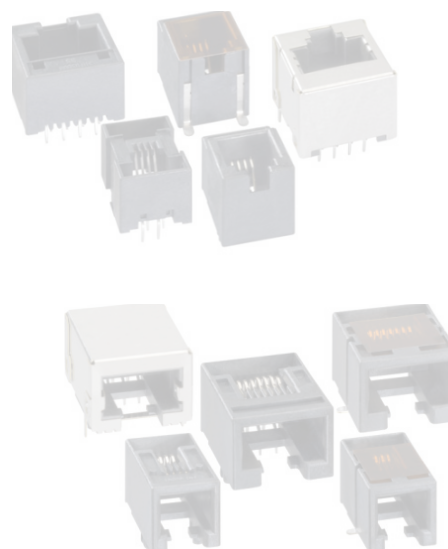
Shielded versions for EMI protection

Suitable for automatic placement

0.10mm co-planarity SMT Jacks

Full product testing with detailed product specifications

Shorter leadtime than most competitors





Right Angle 95501 Jacks

Series: 95501

Cat3

4/4, 6/4, 6/6, 8/8 contacts

Through-hole and SMT soldering

Low profile (11.50mm)

Without shielding

Plastic retention pegs

Tray and tube packaging

Keyed 8/8 circuit available



molex



Top-Entry 95503 Jacks

Series: 95503

Cat3

4/4, 6/4, 6/6, 8/8 contacts

Through-hole and SMT soldering

Low and high profiles (12.70/15.70mm)

Without shielding

Tray, Tube and Tape and Reel packaging

One of the lowest profile top-entry jacks on the market

Optional side ribs

Keyed versions available



[Overview](#)[Datasheet](#)[Video](#)

Top-Entry SMT Jacks with Pick and Place Polyimide film

Series: 85510

Low profile: 85513

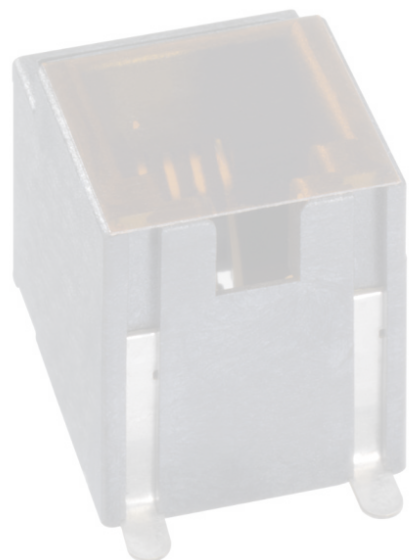
SMT automatic placement possible

4/4, 6/4, 6/6, 8/8 contacts

Polyimide film tape keeps its form and is easily removable

Suitable for high temperature reflow soldering

Packaging options: 13" and 22" tape-on-reel



molex



Vertical Bottom-Entry Jacks

Series: 95502

Cat3

Plugging through PCB for space saving

4/4, 6/4, 6/6, 8/8 contacts

Through-hole soldering

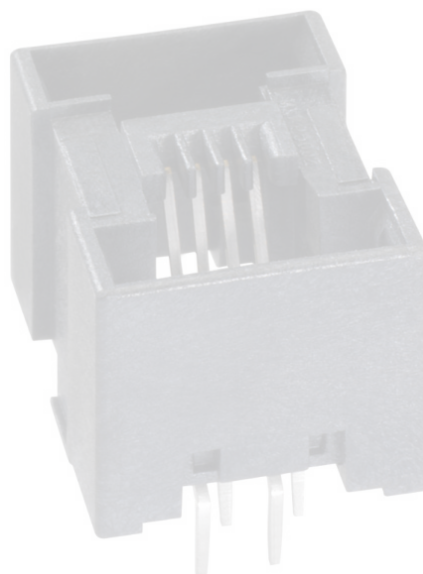
Low profile of 12.58mm

Without shielding

Tray packaging

Recommended PCB

thickness of 1.57mm



[Overview](#)[Datasheet](#)

Top-Entry Keyed Jack with Offset Plug Latch

Series: 95551

Avoids accidental plugging

Cat3

6/6 contacts

Through-hole soldering

Side ribs

16.25 mm high profile

For use with uncentred latch plug

Packaging: Tray and tube



molex



Specialised Jack: Keep-Out Jack

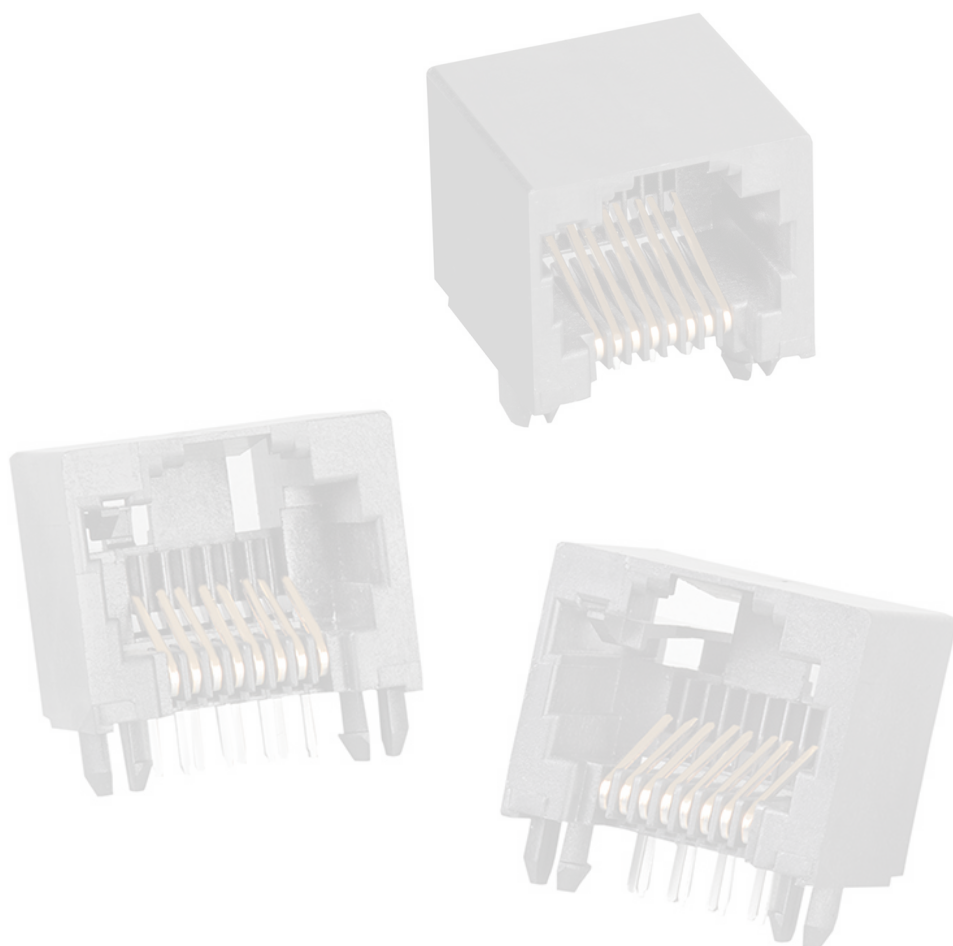
Series: 44620

Cat3

Latch prevents insertion of RJ11 plug into RJ45 housing

Allows RJ45 plug to mate

Prevents damage to RJ45 contacts



[Overview](#)[CAT3
Datasheet](#)[CAT5
Datasheet](#)

Shielded Jacks

Cat3 and Cat 5e

Vertical top-entry and right angle

Single and Multiport versions

External and internal shields

SMT and through-hole versions

Inverted versions

Tray, tube and tape & reel packaging

Low-profile heights available

Light pipe options available



molex



Modular Plugs

Unshielded and shielded versions

[90075 Cat3 Unshielded Plugs](#)

[95043 Cat5 Shielded Plugs](#)

[44915 Cat 6 Long Body Plug](#)

Plug boots available

Dust cover offered in 6/6 and 8/8 versions

[85999-3256 6/6 version](#)

[85999-3255 8/8 version](#)

